

C 11745.71F

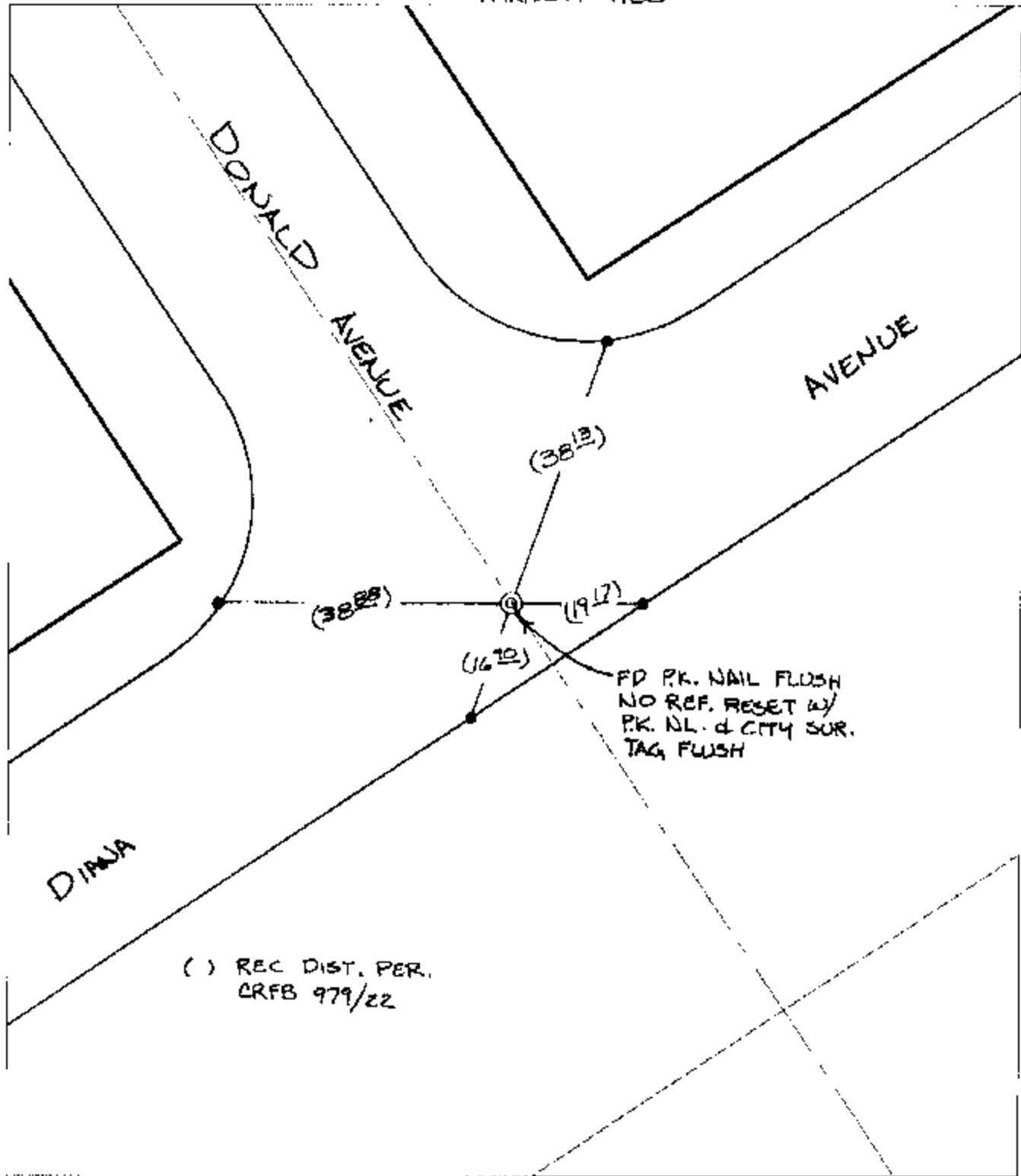
Street:

DONALD AVENUE

X-Street:  
OFFICIAL USE ONLY

DIANA AVENUE

TRANSIT TIES



( ) REC. DIST. PER.  
CRFB 979/22

FD P.K. NAIL FLUSH  
NO REF. RESET w/  
P.K. NL. & CITY SUR.  
TAG FLUSH

- ✕ FD. Ramset Nail on T/C      ● FD. LD. & TK. on T/C
- FD. "C" Nail on T/C      ○ Set LD. & TK. on T/C

P.K. and City Engineer tag to be set @  
surface after street construction is  
complete. (If possible)

Scale: 1" = 20'  
 Date: 12/17/03  
 Drawn by: SURVEY  
 F.B.:  
 TR-Sec: T3SR5W-7

## OFFICIAL TIE PLAT

### CITY OF RIVERSIDE



*These ties are for the purpose of perpetuating the found  
 monumentation. No claim is made as to the relationship of  
 the points or lines shown hereon to true boundary locations.*

Sheet 1 of 1  
 Cadme MB: 66-8