

C 11796 TIE

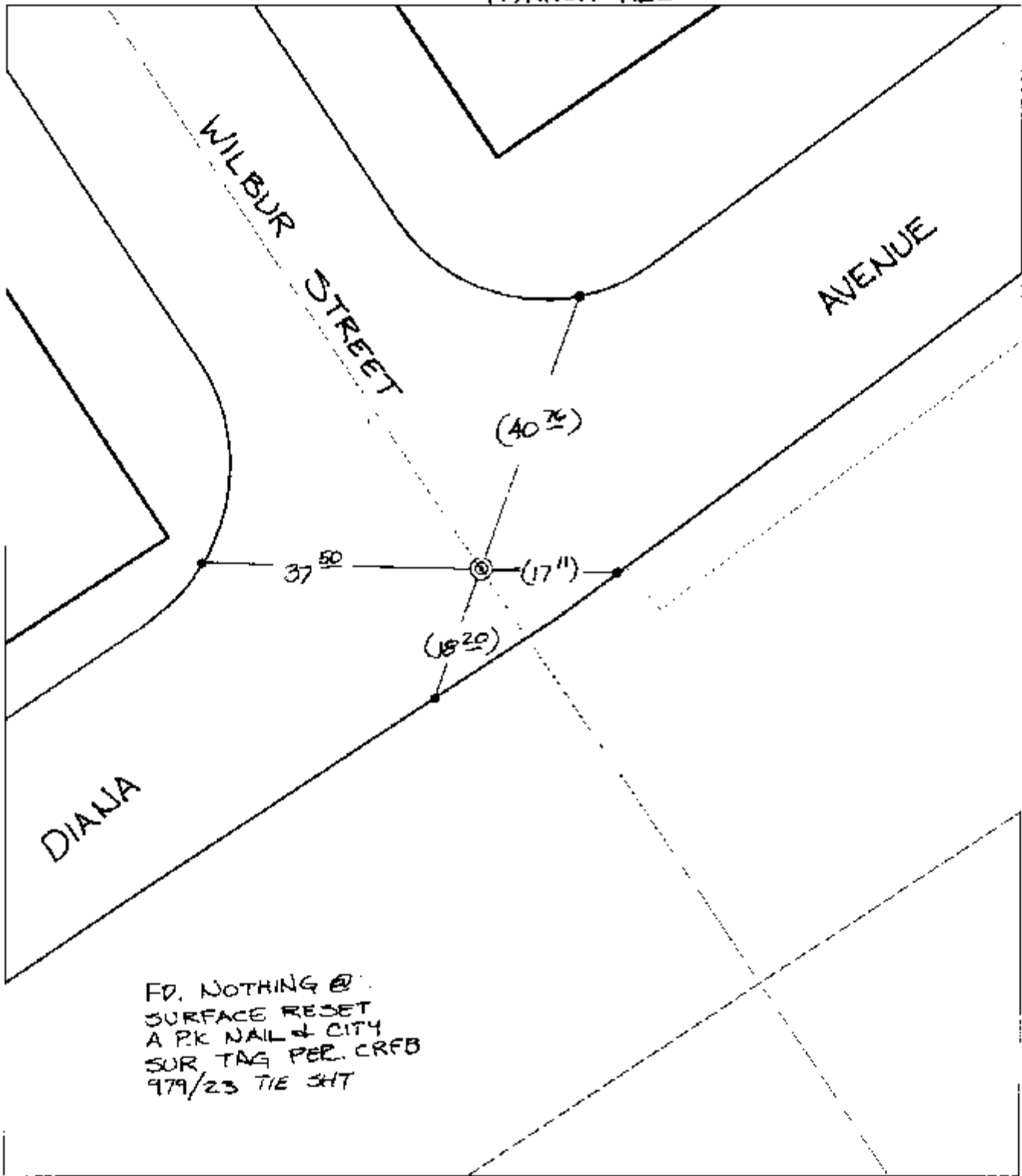
Street:

DIANA AVENUE

X-Street:
OFFICIAL USE ONLY

WILBUR STREET

TRANSIT TIES



FD. NOTHING @
 SURFACE RESET
 A PK NAIL & CITY
 SUR TAG PER. CRFB
 979/23 TIE SHT

- ✕ FD. Ramset Nail on T/C ● FD. LD. & TK. on T/C
- FD. "C" Nail on T/C ○ Set LD. & TK. on T/C

P.K. and City Engineer tag to be set @
 surface after street construction is
 complete. (If possible)

Scale: 1" = 20'
 Date: 12/17/03
 Drawn by: SURVEY
 F.B.:
 TR-Sec: T3SR5W-8

OFFICIAL TIE PLAT

CITY OF RIVERSIDE



*These ties are for the purpose of perpetuating the found
 monumentation. No claim is made as to the relationship of
 the points or lines shown hereon to true boundary locations.*

Sheet 1 of 1
 Cadme MB: 66-8