

C 11765.TIF

Street:

LOMA VISTA STREET

X-Street:
OFFICIAL USE ONLY

KANSAS AVENUE

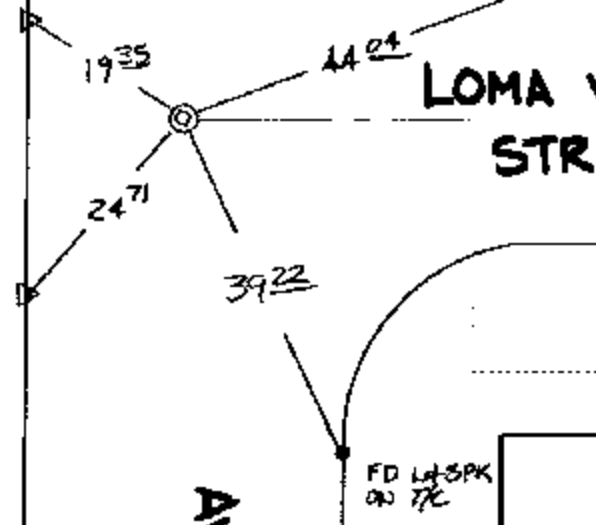
SWING TIES

KANSAS

LOMA VISTA STREET

AVENUE

⊙ FD NAIL W/LS 544B TAG NO REF FLUSH RESET W/PK NL. CITY SUR. TAG FLUSH



Δ SET "C" NAIL W/CITY TIE TAG ON T/C

- × FD. Ramset Nail on T/C ● FD. LD. & TK. on T/C
- FD. "C" Nail on T/C ○ Set LD. & TK. on T/C

P.K. and City Engineer tag to be set @ surface after street construction is complete. (If possible)

Scale: 1" = 20'
 Date: 02/14/03
 Drawn by: SURVEY
 F.B.:
 TR-Sec: T2SR5W-24

OFFICIAL TIE PLAT

CITY OF RIVERSIDE

These ties are for the purpose of perpetuating the found monumentation. No claim is made as to the relationship of the points or lines shown hereon to true boundary locations.



Sheet 1 of 1
 Cadme MB: 40-2