

C 11770 .TIF

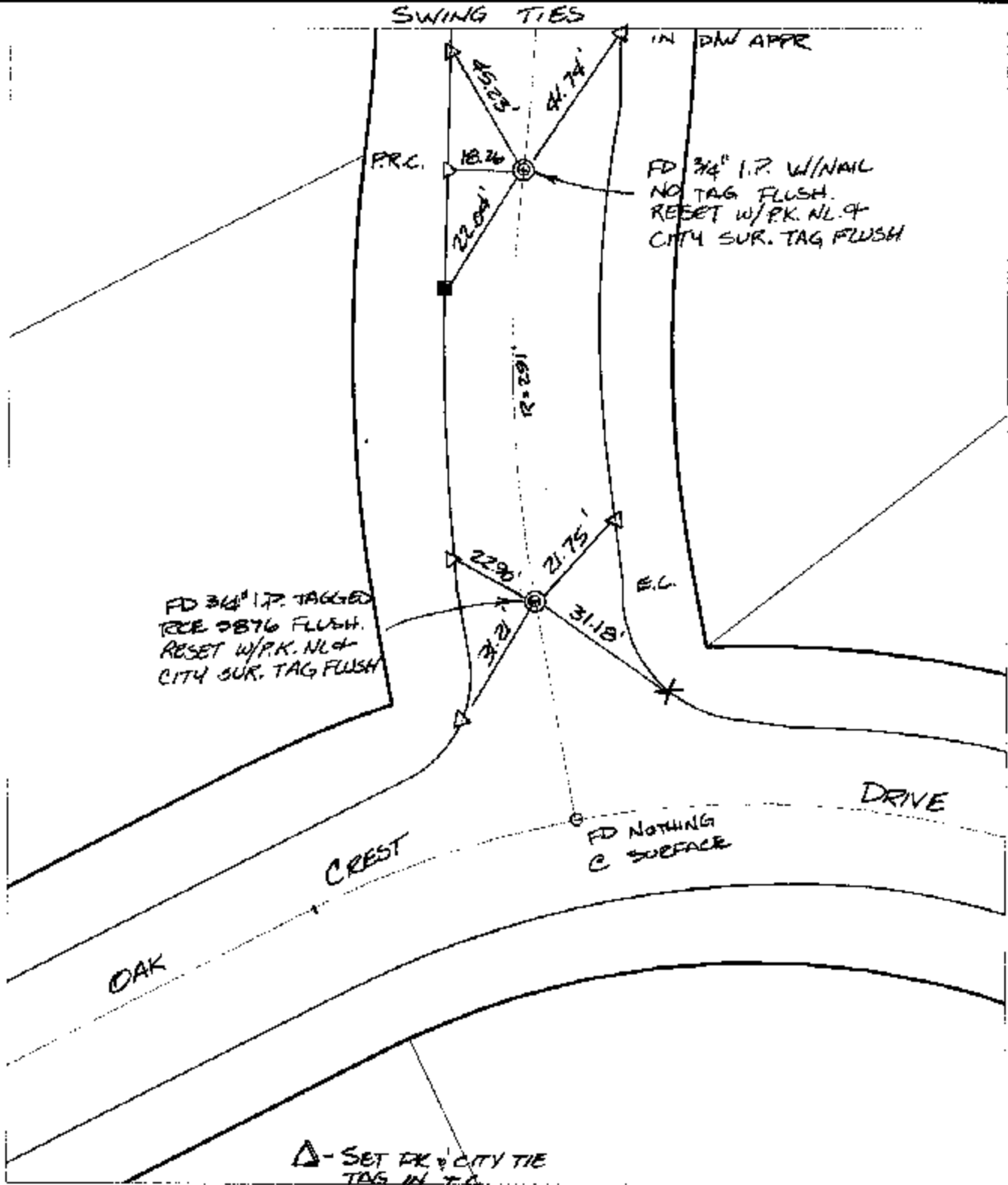
Street:

OAK CREST DRIVE

X-Street:
OFFICIAL USE ONLY

MIDVALE DRIVE

SWING TIES



FD 3/4" I.P. TAGGED
PCE 0876 FLUSH.
RESET W/P.K. NL. &
CITY SUR. TAG FLUSH

FD 3/4" I.P. W/NAIL
NO TAG FLUSH.
RESET W/P.K. NL. &
CITY SUR. TAG FLUSH

FD NOTHING
C SURFACE

△ - SET PK & CITY TIE
TAG IN T.C.

- ✕ FD. Ramset Nail on T/C
- FD. LD. & TK. on T/C
- FD. "C" Nail on T/C
- Set LD. & TK. on T/C

P.K. and City Engineer tag to be set @
surface after street construction is
complete. (if possible)

Scale: 1" = 30'
 Date: 01/30/03
 Drawn by: SURVEY
 F.B.:
 TR-Sec: T2SR5W-36

OFFICIAL TIE PLAT

CITY OF RIVERSIDE

*These ties are for the purpose of perpetuating the found
 monumentation. No claim is made as to the relationship of
 the points or lines shown hereon to true boundary locations.*



Sheet 1 of 1
 Cadme MB: 55-3