

C 11775.TIE

Street:

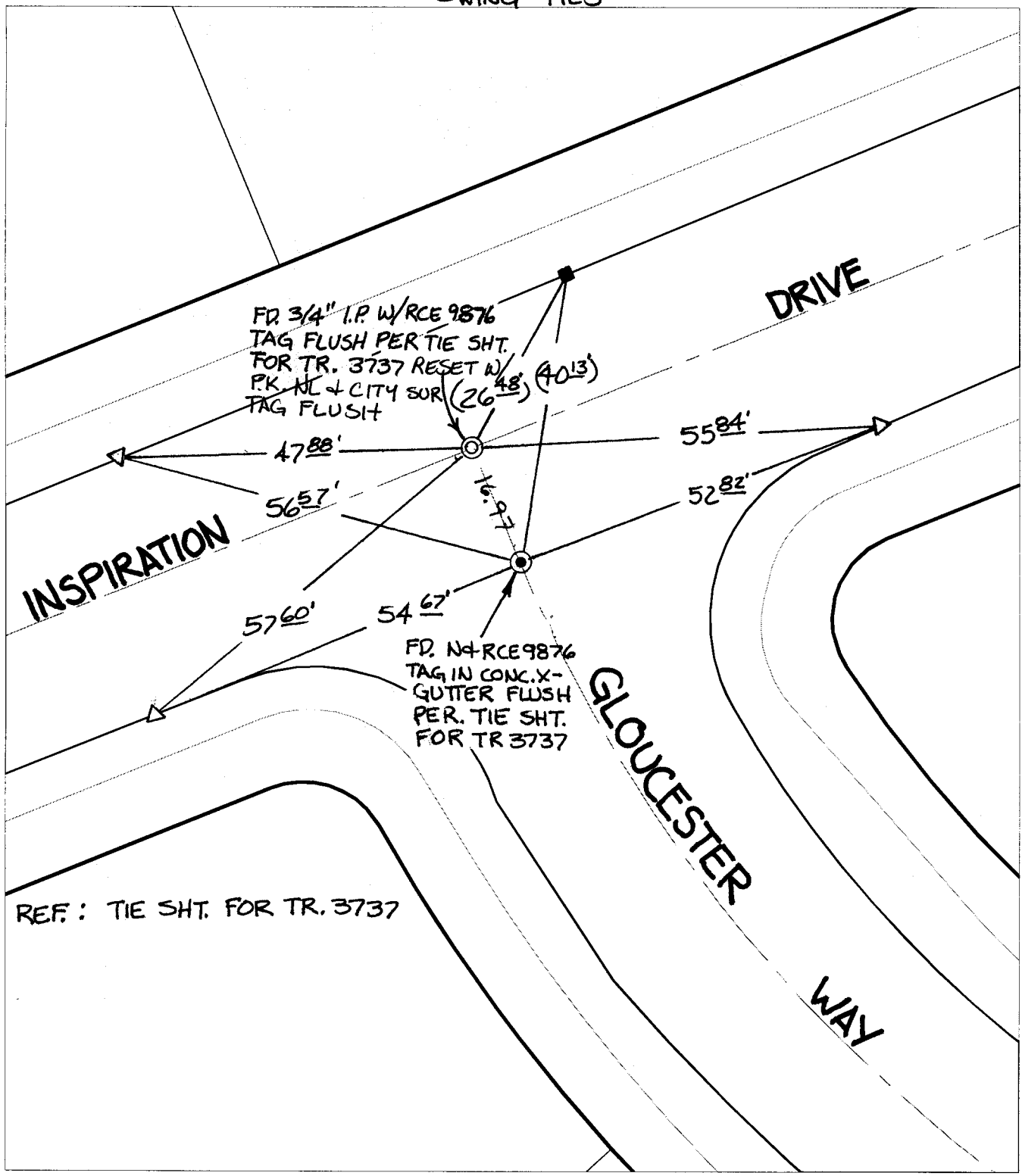
INSPIRATION DRIVE

X-Street:

GLOUCESTER WAY

OFFICIAL USE ONLY

SWING TIES



REF: TIE SHT. FOR TR. 3737

- ✕ FD. Ramset Nail on T/C      ● FD. LD. & TK. on T/C      P.K. and City Engineer tag to be set @ surface after street construction is complete. (If possible)
- FD. "C" Nail on T/C      ○ Set LD. & TK. on T/C

Scale: 1" = 20'

Date: 02/13/03

Drawn by: SURVEY

F.B.:

TR-Sec: T2SR5W-36

**OFFICIAL TIE PLAT**  
CITY OF RIVERSIDE

*These ties are for the purpose of perpetuating the found monumentation. No claim is made as to the relationship of the points or lines shown hereon to true boundary locations.*

Sheet 1 of 1  
Cadme MB: 55-3