

C 11782.TIF

Street:

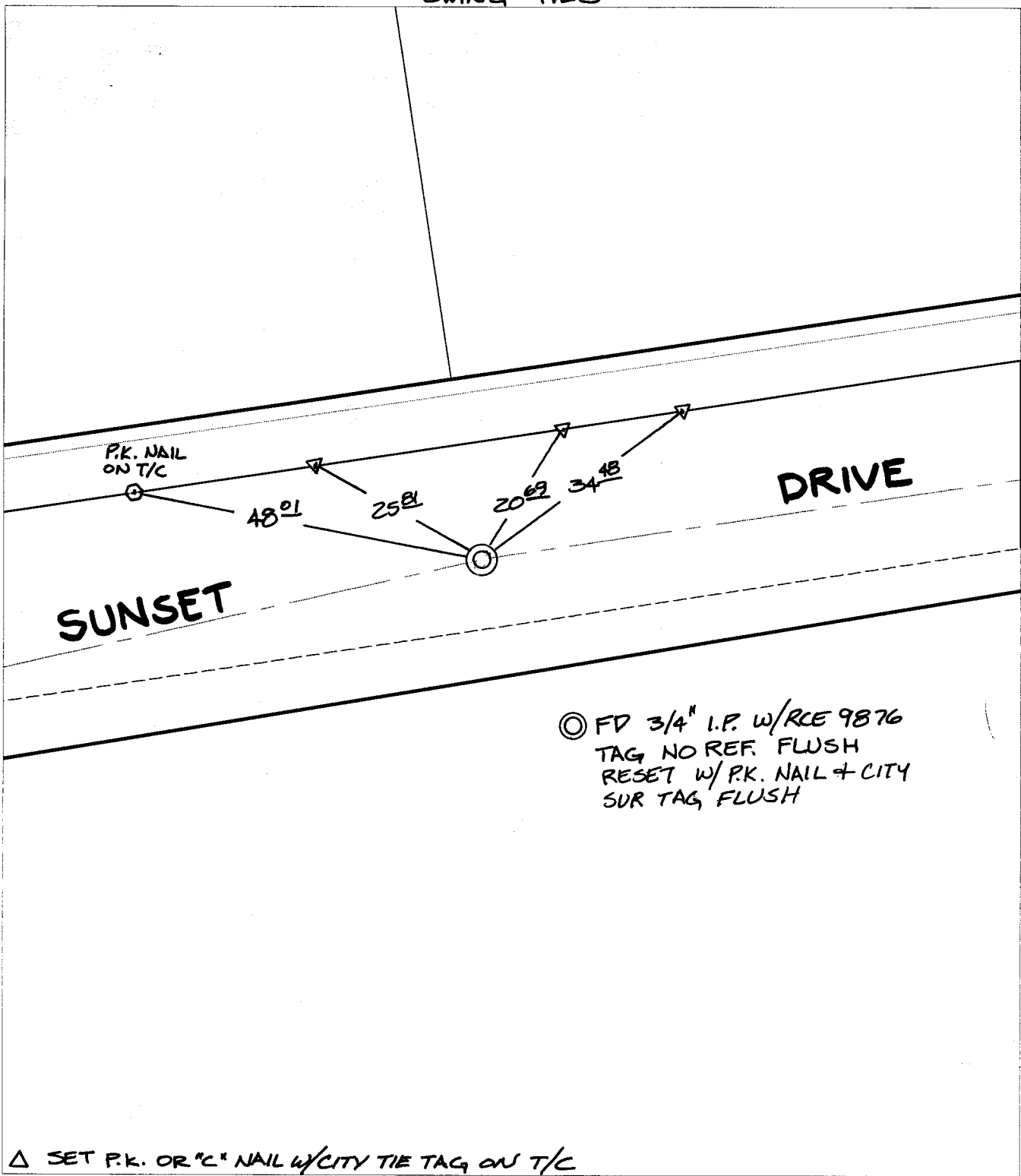
SUNSET DRIVE

OFFICIAL USE ONLY

X-Street:

ANGLE PT.

SWING TIES



⊙ FD 3/4" I.P. W/RCE 9876
 TAG NO REF. FLUSH
 RESET W/P.K. NAIL + CITY
 SUR TAG FLUSH

△ SET P.K. OR "C" NAIL W/CITY TIE TAG ON T/C

- ✕ FD. Ramset Nail on T/C ● FD. LD. & TK. on T/C P.K. and City Engineer tag to be set @ surface after street construction is complete. (If possible)
- FD. "C" Nail on T/C ○ Set LD. & TK. on T/C

Scale: 1" = 20'
 Date: 01/30/03
 Drawn by: SURVEY
 F.B.:
 TR-Sec: T2SR5W-36

OFFICIAL TIE PLAT

CITY OF RIVERSIDE

These ties are for the purpose of perpetuating the found monumentation. No claim is made as to the relationship of the points or lines shown hereon to true boundary locations.



Sheet 1 of 1
 Cadme MB: 55-3