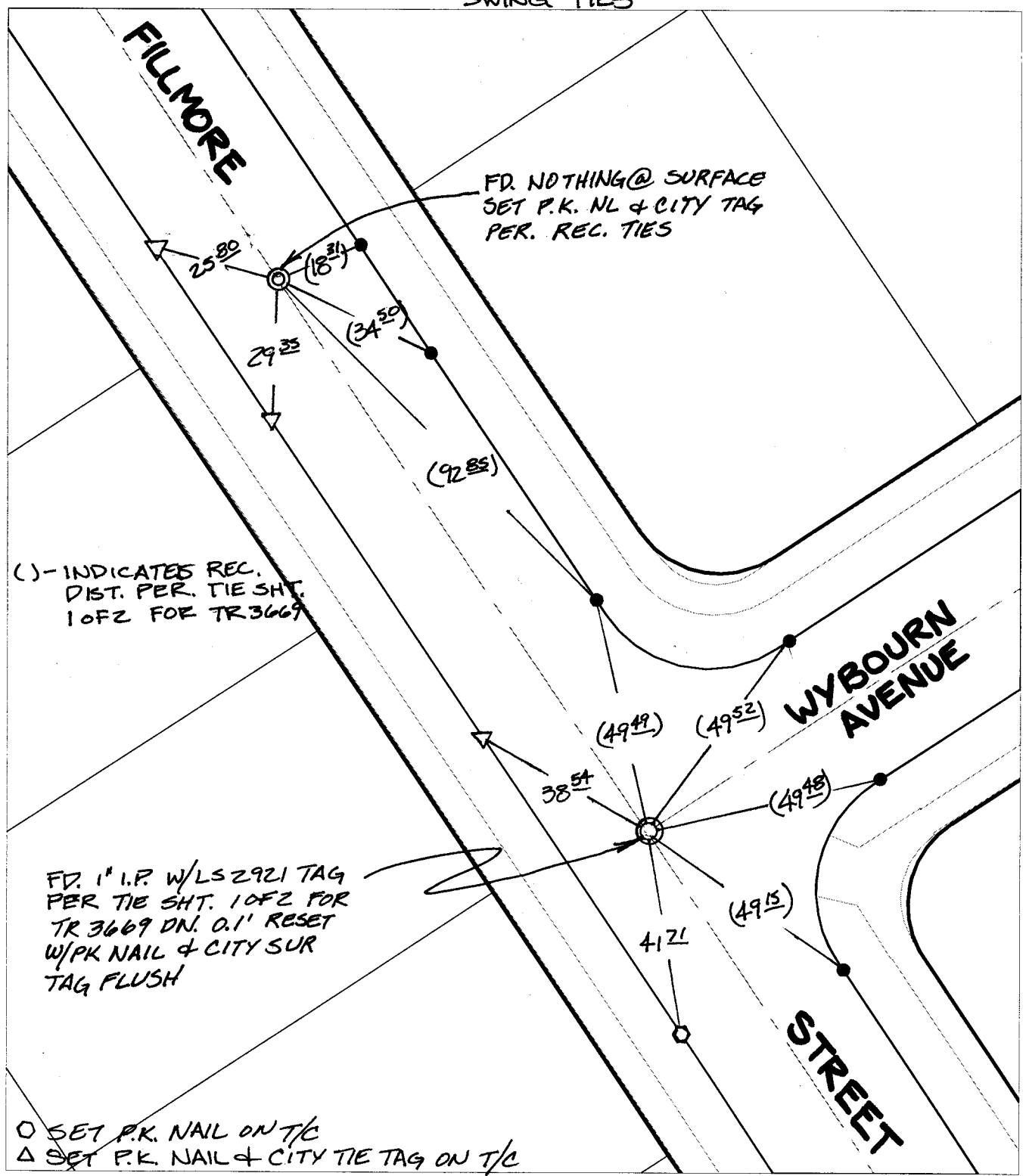


C 11785.TIE

Street: FILLMORE STREET
X-Street: WYBOURN AVENUE
OFFICIAL USE ONLY

SWING TIES



() - INDICATES REC. DIST. PER. TIE SHT. 10FZ FOR TR 3669

FD. 1" I.P. W/LS 2921 TAG PER TIE SHT. 10FZ FOR TR 3669 DN. 0.1' RESET W/PK NAIL & CITY SUR TAG FLUSH

○ SET P.K. NAIL ON T/C
△ SET P.K. NAIL & CITY TIE TAG ON T/C

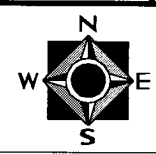
✕ FD. Ramset Nail on T/C ● FD. LD. & TK. on T/C P.K. and City Engineer tag to be set @ surface after street construction is complete. (If possible)
 ■ FD. "C" Nail on T/C ○ Set LD. & TK. on T/C

Scale: 1" = 30'
 Date: 09/30/02
 Drawn by: SURVEY
 F.B.:
 TR-Sec: T3SR6W-23

OFFICIAL TIE PLAT

CITY OF RIVERSIDE

These ties are for the purpose of perpetuating the found monumentation. No claim is made as to the relationship of the points or lines shown hereon to true boundary locations.



Sheet 1 of 1
 Cadme MB: 79-7