

C 11786.TIF

Street:

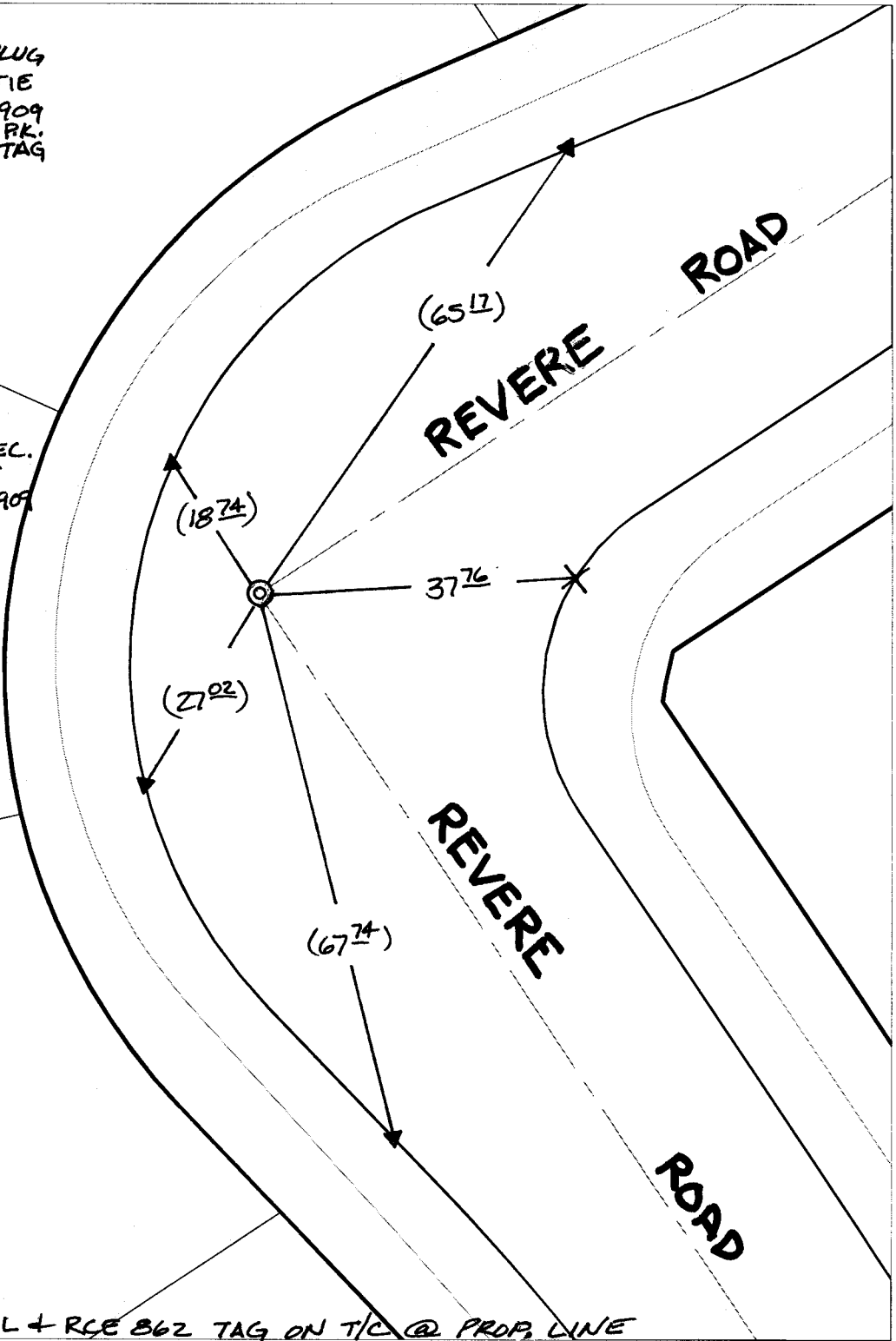
REVERE ROAD

X-Street:  
OFFICIAL USE ONLY

WYBOURN AVENUE

⊙ FD. 3/4" I.P. W/ P/PLUG  
RCE 862 PER. TIE  
SHT. FOR TR 6909  
FLUSH RESET W/ P.K.  
NL. & CITY SUR TAG  
FLUSH

( ) - INDICATES REL.  
DIST. PER TIE  
SHT. FOR TR 6909



▲ FD RAMSET NAIL + RCE 862 TAG ON T/C @ PROP. LINE

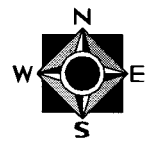
- × FD. Ramset Nail on T/C    ● FD. LD. & TK. on T/C    P.K. and City Engineer tag to be set @ surface after street construction is complete. (If possible)
- FD. "C" Nail on T/C    ○ Set LD. & TK. on T/C

Scale: 1" = 20'  
 Date: 09/30/02  
 Drawn by: SURVEY  
 F.B.:  
 TR-Sec: T3SR6W-23

## OFFICIAL TIE PLAT

### CITY OF RIVERSIDE

*These ties are for the purpose of perpetuating the found monumentation. No claim is made as to the relationship of the points or lines shown hereon to true boundary locations.*



Sheet 1 of 1  
 Cadme MB: 79-7