

C11787.TIF

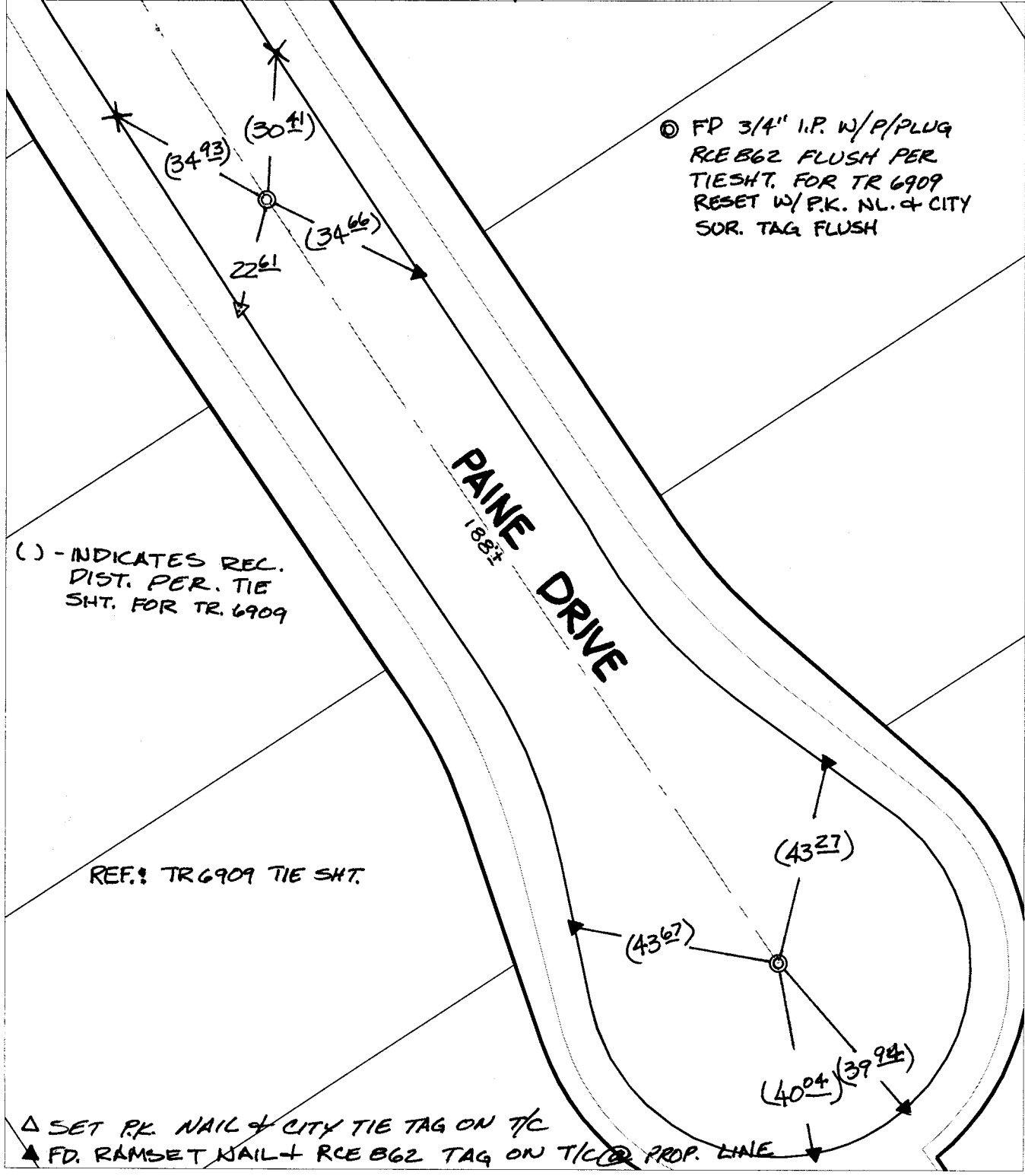
Street:

PAINNE DRIVE

X-Street:
OFFICIAL USE ONLY

CUL-DE-SAC

SWING TIES



⊙ FD 3/4" I.P. W/P/PLUG
RCE B62 FLUSH PER
TIE SHT. FOR TR 6909
RESET W/P.K. NL. & CITY
SOR. TAG FLUSH

() - INDICATES REC.
DIST. PER. TIE
SHT. FOR TR. 6909

REF.: TR 6909 TIE SHT.


△ SET P.K. NAIL & CITY TIE TAG ON T/C
▲ FD. RAMSET NAIL + RCE B62 TAG ON T/C @ PROP. LINE

- ✕ FD. Ramset Nail on T/C ● FD. LD. & TK. on T/C P.K. and City Engineer tag to be set @ surface after street construction is complete. (If possible)
- FD. "C" Nail on T/C ○ Set LD. & TK. on T/C

Scale: 1" = 30'
Date: 09/30/02
Drawn by: SURVEY
F.B.:
TR-Sec: T3SR6W-23

OFFICIAL TIE PLAT
CITY OF RIVERSIDE

These ties are for the purpose of perpetuating the found monumentation. No claim is made as to the relationship of the points or lines shown hereon to true boundary locations.



Sheet 1 of 1
Cadme MB: 79-7