

C 11789. TIF

Street:

NATIONAL DRIVE

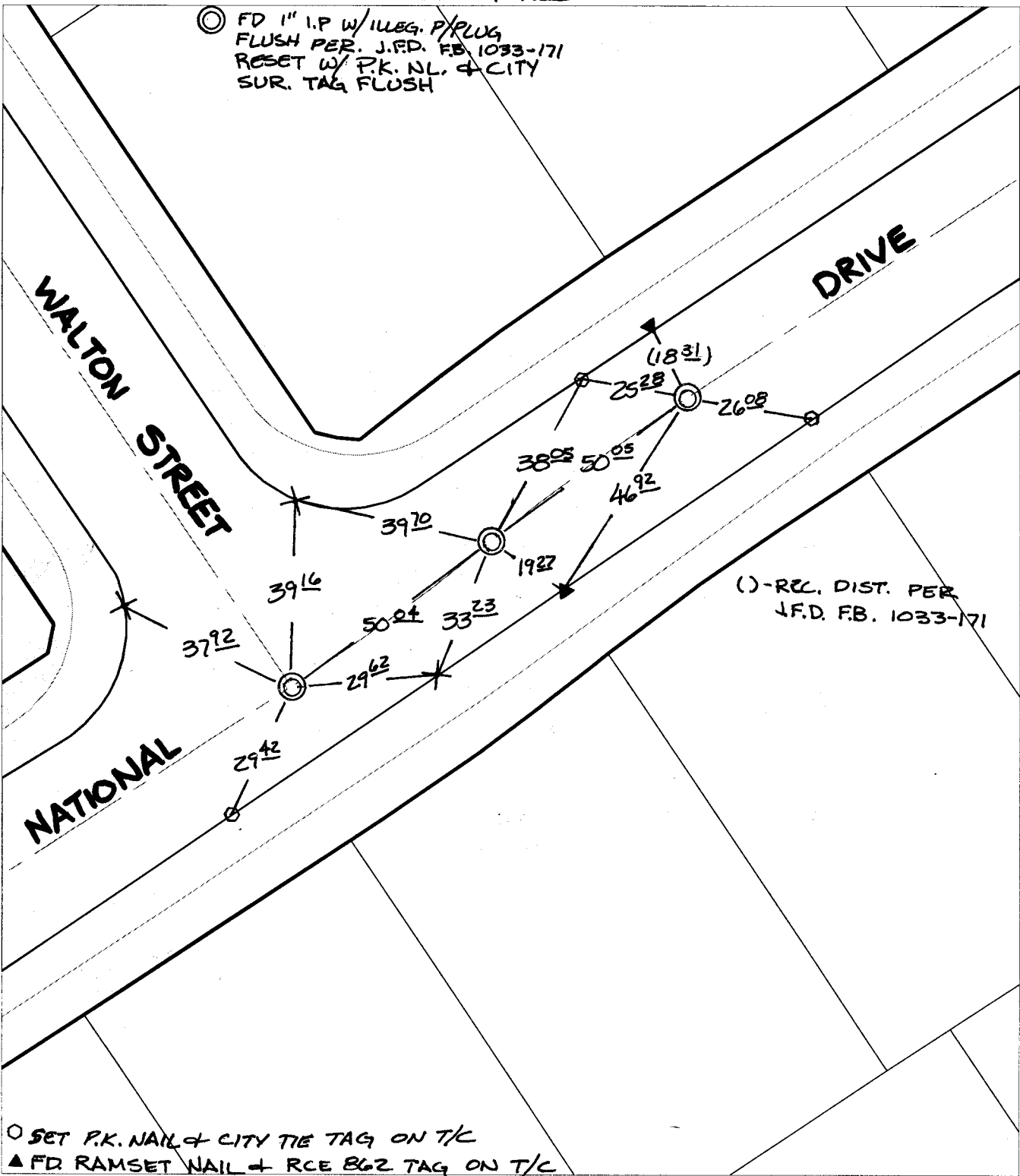
OFFICIAL USE ONLY

X-Street:

WALTON STREET

SWING TIES

⊙ FD 1" I.P. W/ ILL. P/PLUG
FLUSH PER. J.F.D. FB. 1033-171
RESET W/ P.K. NL. & CITY
SUR. TAG FLUSH



Scale: 1" = 30'

Date: 09/30/02

Drawn by: SURVEY

F.B.:

TR-Sec: T3SR6W-23

OFFICIAL TIE PLAT

CITY OF RIVERSIDE

These ties are for the purpose of perpetuating the found monumentation. No claim is made as to the relationship of the points or lines shown hereon to true boundary locations.



Sheet 1 of 1

Cadme MB: 79-7