

C 11794, T1E

Street:

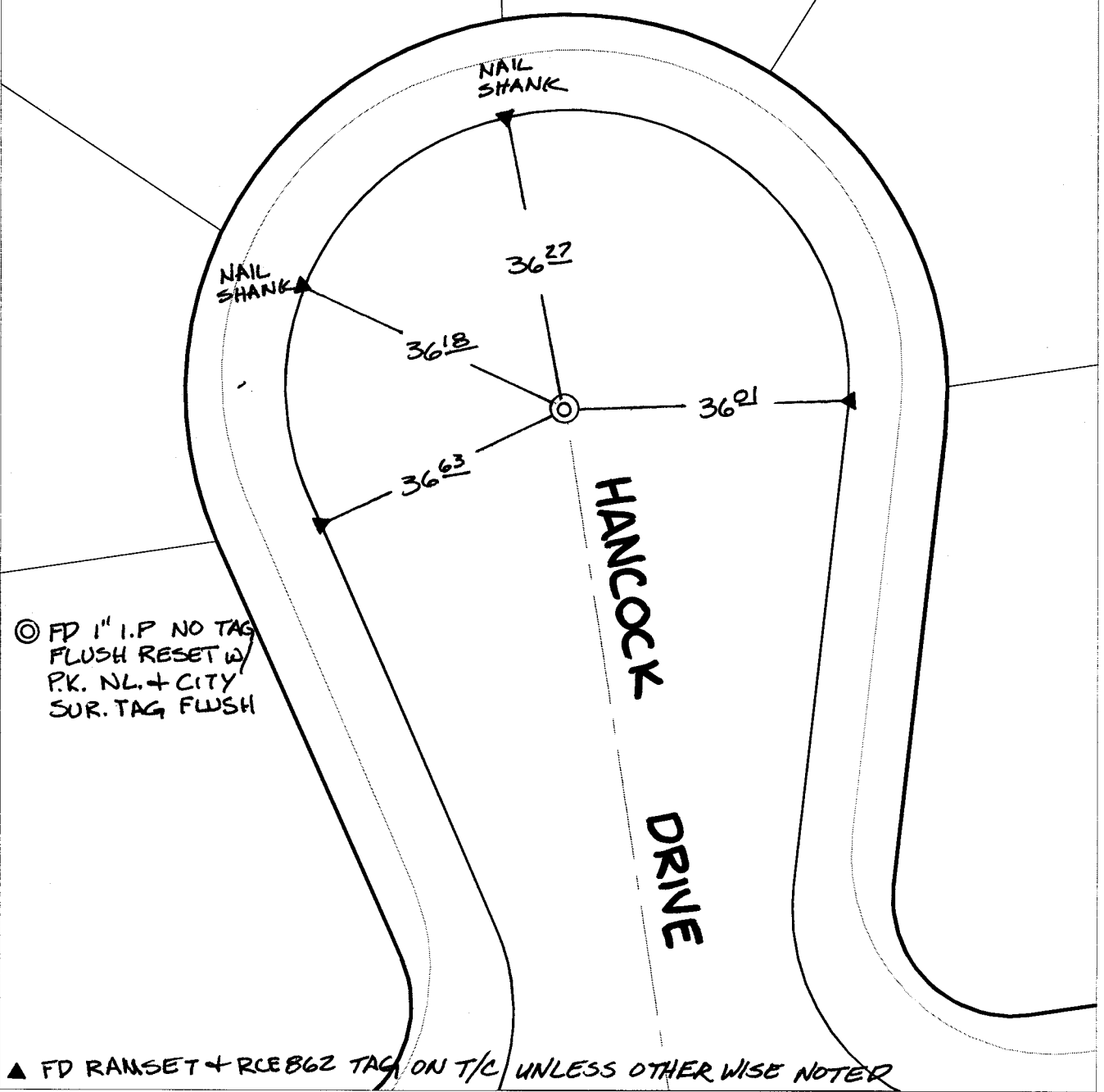
HANCOCK DRIVE

OFFICIAL USE ONLY

X-Street:

CUL-DE-SAC NORTH

REF.: J.F.D. F.B. 1021/118-A



- ✕ FD. Ramset Nail on T/C      ● FD. LD. & TK. on T/C      P.K. and City Engineer tag to be set @ surface after street construction is complete. (If possible)
- FD. "C" Nail on T/C      ○ Set LD. & TK. on T/C

Scale: 1" = 20'  
 Date: 09/18/02  
 Drawn by: scurtis  
 F.B.:  
 TR-Sec: T3SR6W-23

## OFFICIAL TIE PLAT

### CITY OF RIVERSIDE

*These ties are for the purpose of perpetuating the found monumentation. No claim is made as to the relationship of the points or lines shown hereon to true boundary locations.*



Sheet 1 of 1  
 Cadme MB: 79-7