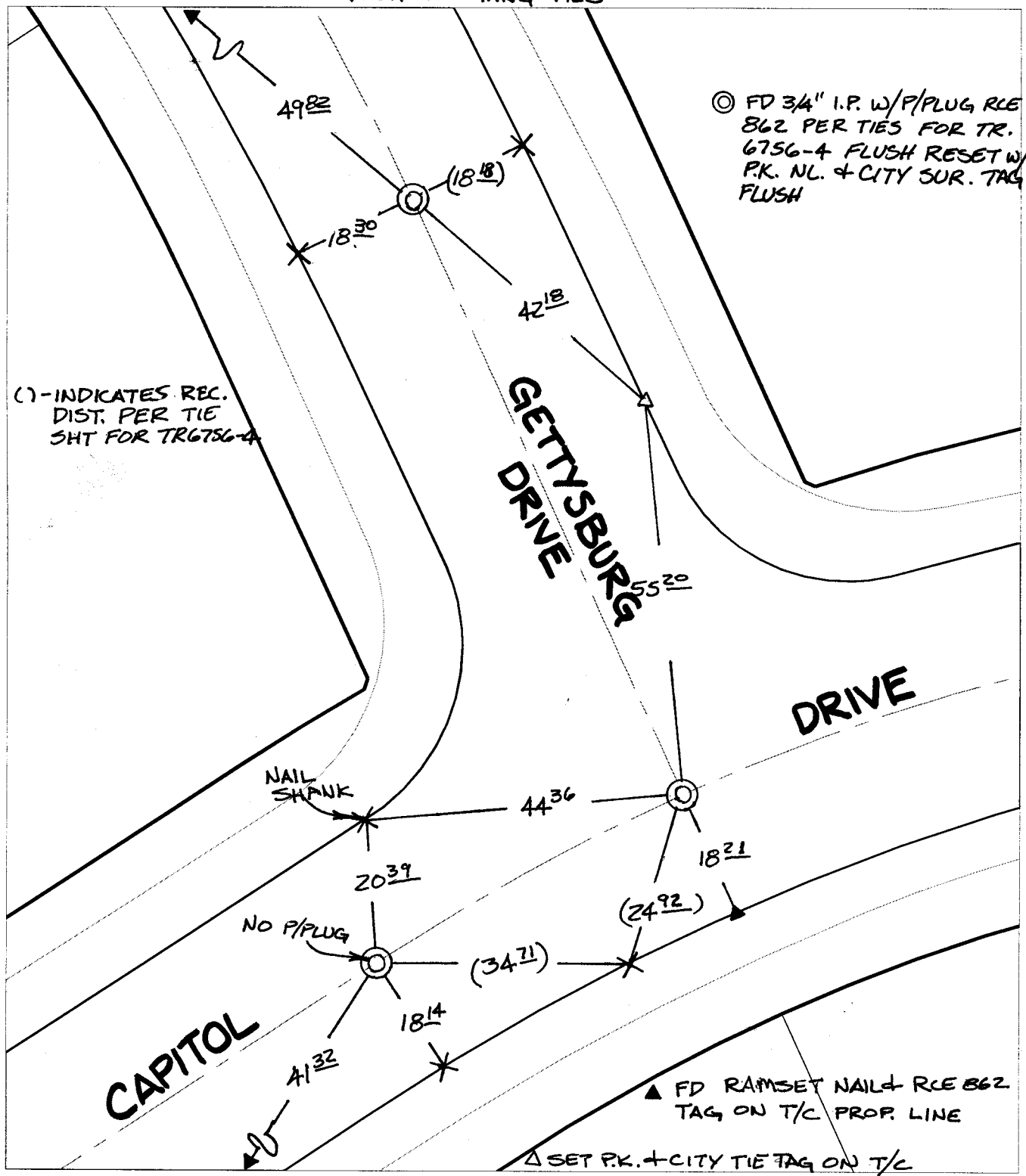


C11799.T1E

Street: CAPITOL DRIVE X-Street: GETTYSBURG DRIVE  
OFFICIAL USE ONLY

TRANSIT + SWING TIES



○ FD 3/4" I.P. W/P/PLUG RCE 862 PER TIES FOR TR. 6756-4 FLUSH RESET W/ P.K. NL. + CITY SUR. TAG FLUSH

(○) - INDICATES REC. DIST. PER TIE SHOT FOR TR6756-4

- ✕ FD. Ramset Nail on T/C
- FD. LD. & TK. on T/C
- ▲ P.K. and City Engineer tag to be set @ surface after street construction is complete. (If possible)
- FD. "C" Nail on T/C
- Set LD. & TK. on T/C

Scale: 1" = 20'  
 Date: 09/30/02  
 Drawn by: SURVEY  
 F.B.:  
 TR-Sec: T3SR6W-23

## OFFICIAL TIE PLAT

### CITY OF RIVERSIDE

*These ties are for the purpose of perpetuating the found monumentation. No claim is made as to the relationship of the points or lines shown hereon to true boundary locations.*



Sheet 1 of 1  
 Cadme MB: 79-7