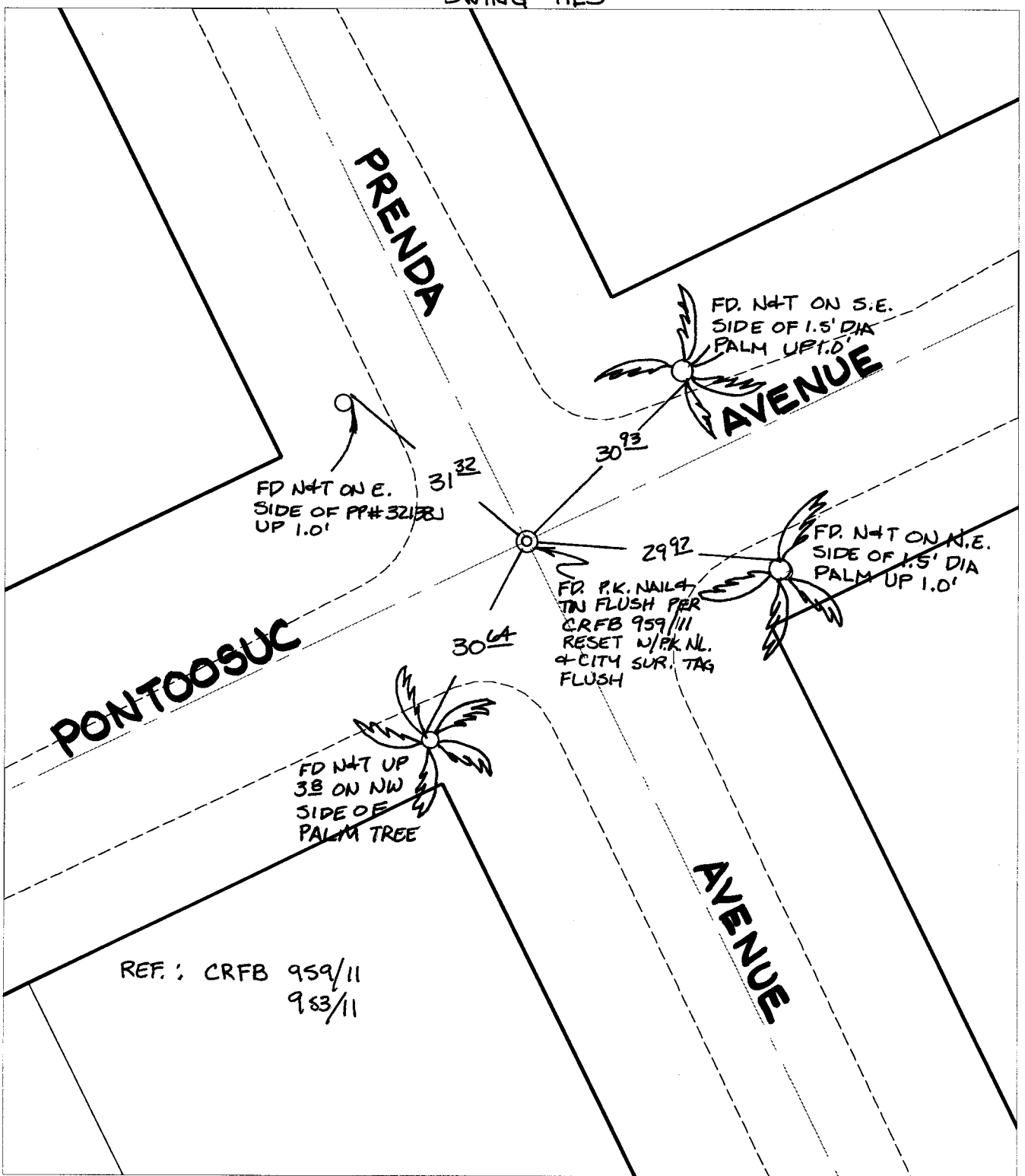


C 11844.T1F

Street: PRENDA AVENUE

X-Street: PONTOOSUC AVENUE
OFFICIAL USE ONLY

SWING TIES



REF.: CRFB 959/11
983/11

- ✕ FD. Ramset Nail on T/C ● FD. LD. & TK. on T/C P.K. and City Engineer tag to be set @ surface after street construction is complete. (If possible)
- FD. "C" Nail on T/C ○ Set LD. & TK. on T/C

Scale: 1" = 20'

Date: 01/30/03

Drawn by: SURVEY

F.B.:

TR-Sec: T3SR5W-10

OFFICIAL TIE PLAT

CITY OF RIVERSIDE

These ties are for the purpose of perpetuating the found monumentation. No claim is made as to the relationship of the points or lines shown hereon to true boundary locations.



Sheet 1 of 1
Cadme MB: 69-5