

C 11845. TIE

Street:

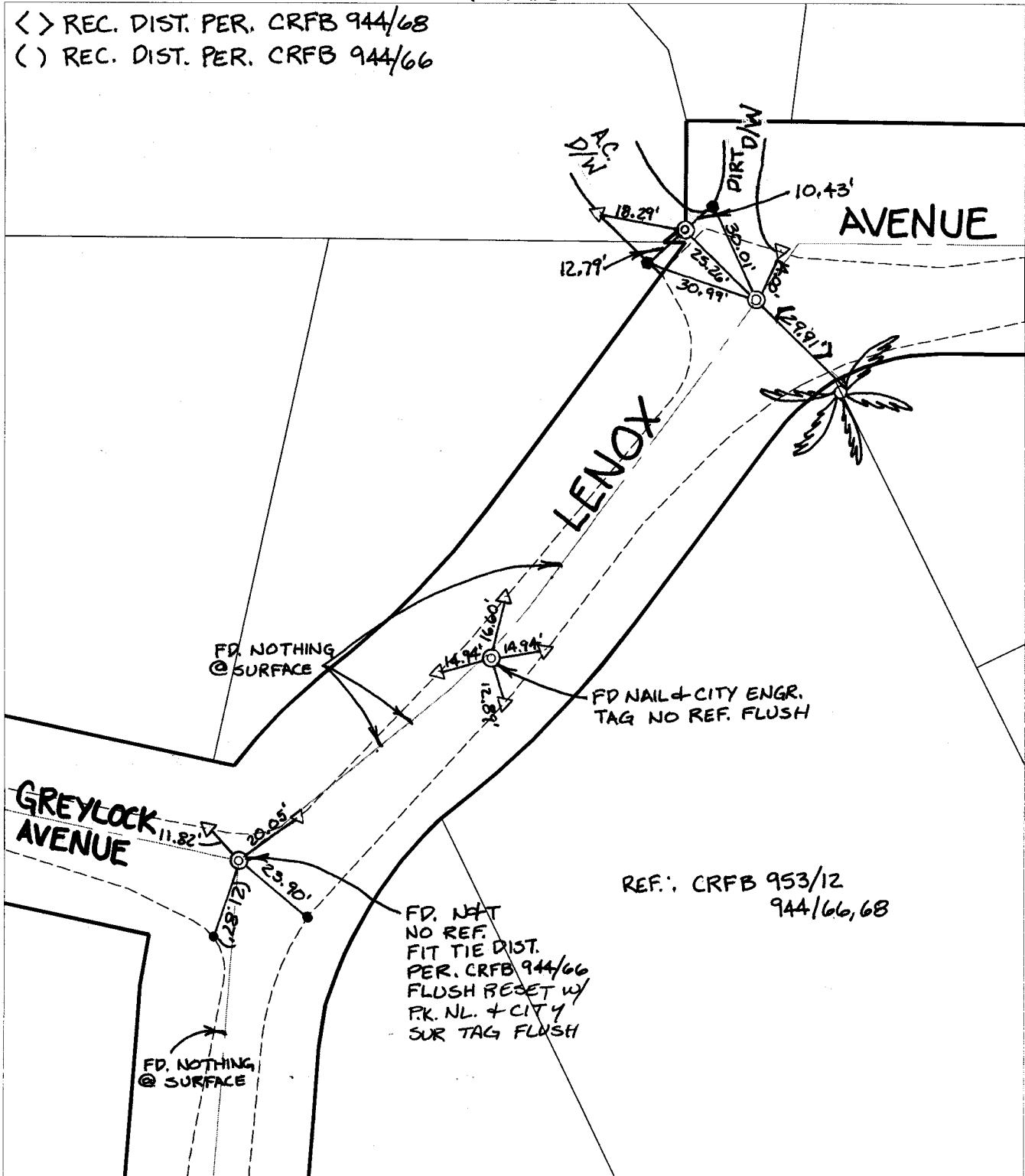
LENOX AVENUE

X-Street: OFFICIAL USE ONLY

GREYLOCK AVENUE

SWING TIES

< > REC. DIST. PER. CRFB 944/68  
( ) REC. DIST. PER. CRFB 944/66



X FD. Ramset Nail on T/C    ● FD. LD. & TK. on T/C    P.K. and City Engineer tag to be set @ surface after street construction is complete. (If possible)  
 ■ FD. "C" Nail on T/C    ○ Set LD. & TK. on T/C

Scale: 1" = 40'  
 Date: 01/09/03  
 Drawn by: scurtis  
 F.B.:  
 TR-Sec: T3SR5W-10

**OFFICIAL TIE PLAT**  
 CITY OF RIVERSIDE

*These ties are for the purpose of perpetuating the found monumentation. No claim is made as to the relationship of the points or lines shown hereon to true boundary locations.*



Sheet 1 of 1  
 Cadme MB: 69-5