

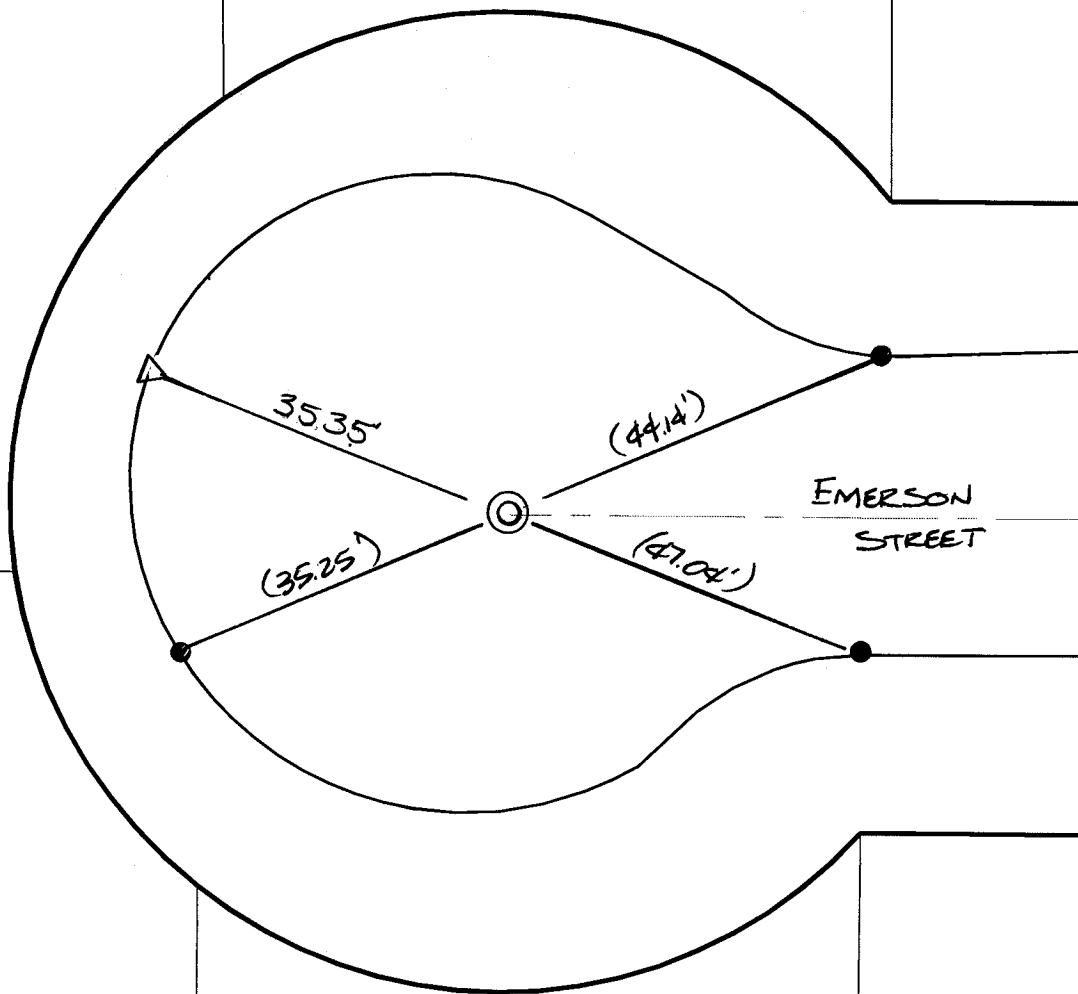
Street:

EMERSON STREET

X-Street:
OFFICIAL USE ONLY

CUL-DE-SAC

TRANSIT TIES



⊗ - FD 1 1/2" I.P. w/ CITY
 ENGR TAG FLUSH PER
 CRFB 855/41 RESET
 W/ P.K. NAIL 4 CITY SUR.
 TAG FLUSH

() REC DIST. PER. 855/41

REF: CRFB 855/41, 753/61

- ⊗ FD. Ramset Nail on T/C ● FD. LD. & TK. on T/C
- FD. "C" Nail on T/C ○ Set LD. & TK. on T/C

P.K. and City Engineer tag to be set @
 surface after street construction is
 complete. (If possible)

Scale: 1" = 20'
 Date: 01/30/03
 Drawn by: SURVEY
 F.B.:
 TR-Sec: T2SR5W-34

OFFICIAL TIE PLAT

CITY OF RIVERSIDE

*These ties are for the purpose of perpetuating the found
 monumentation. No claim is made as to the relationship of
 the points or lines shown hereon to true boundary locations.*



Sheet 1 of 1
 Cadme MB: 38-7