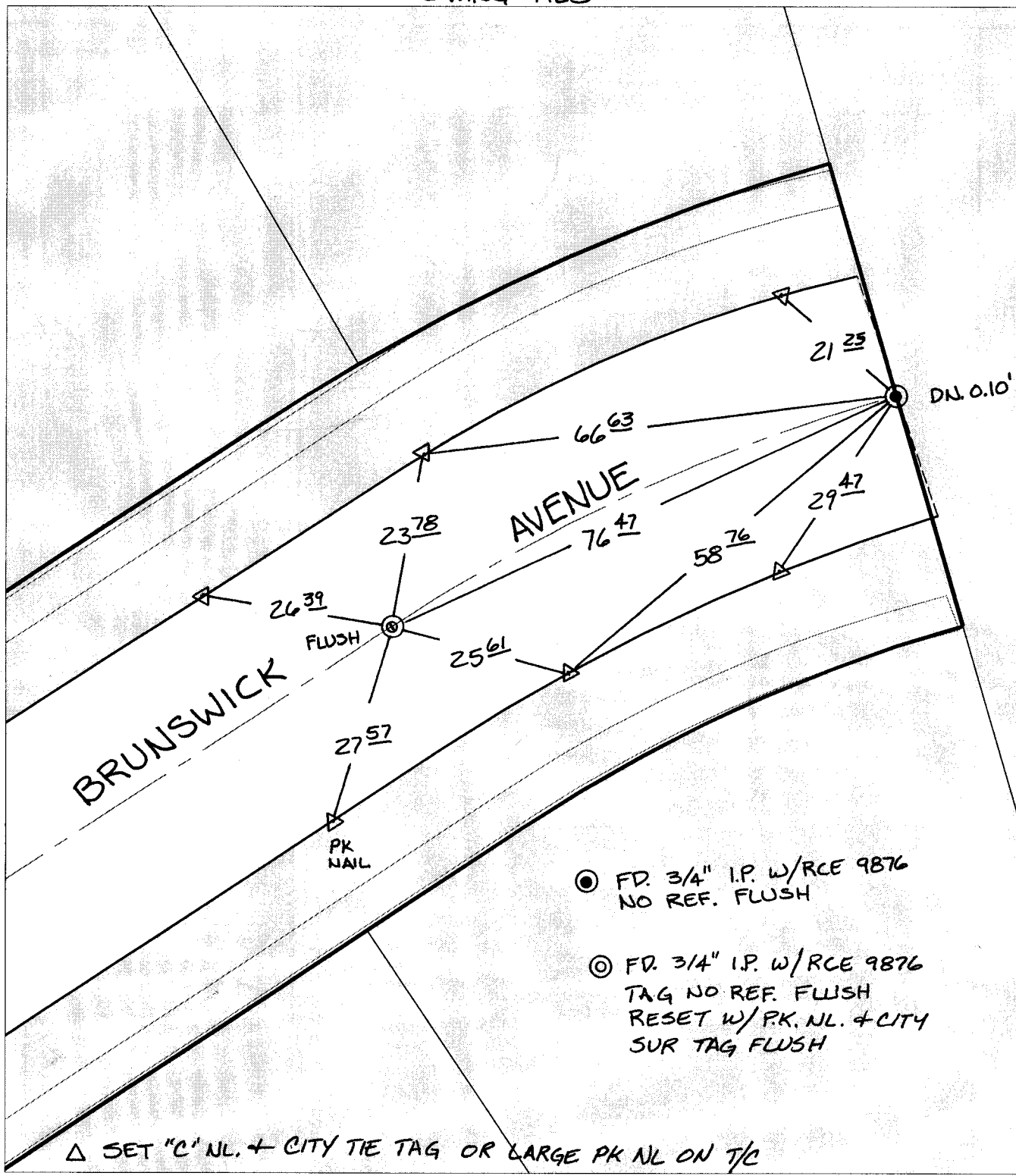


SWING TIES



- FD. 3/4" I.P. W/RCE 9876 NO REF. FLUSH
- FD. 3/4" I.P. W/RCE 9876 TAG NO REF. FLUSH RESET W/PK. NL. + CITY SUR TAG FLUSH

△ SET "C" NL. + CITY TIE TAG OR LARGE PK NL ON T/C

- × FD. Ramset Nail on T/C
- FD. LD. & TK. on T/C
- FD. "C" Nail on T/C
- Set LD. & TK. on T/C
- P.K. and City Engineer tag to be set @ surface after street construction is complete. (If possible)

Scale: 1" = 20'  
 Date: 12/18/03  
 Drawn by: SURVEY  
 F.B.:  
 TR-Sec: T3SR5W-6

**OFFICIAL TIE PLAT**  
**CITY OF RIVERSIDE**

*These ties are for the purpose of perpetuating the found monumentation. No claim is made as to the relationship of the points or lines shown hereon to true boundary locations.*

Sheet 1 of 1  
 Cadme MB: 51-6