

C11871.TIF

Street:

GARFIELD STREET

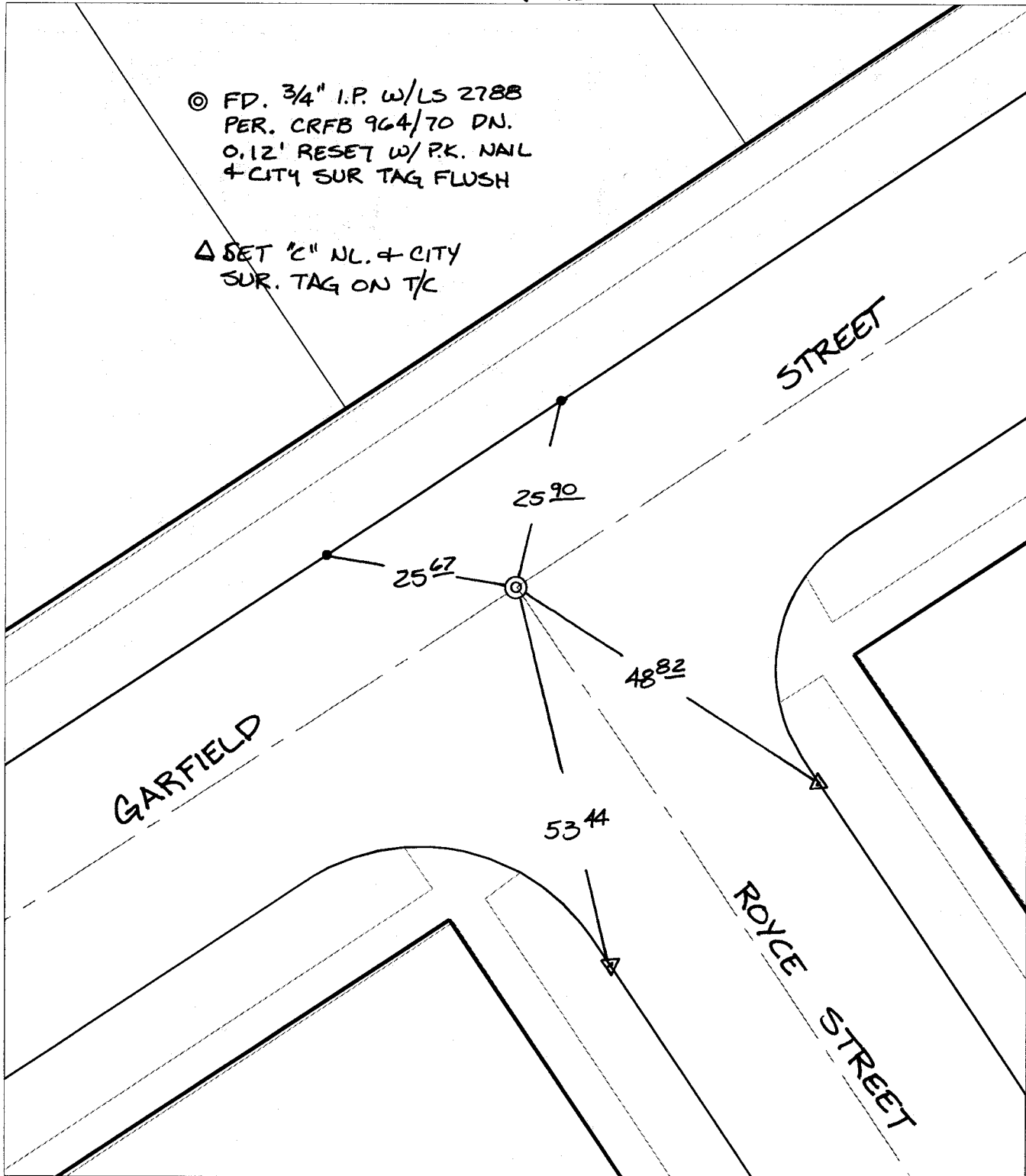
X-Street:
OFFICIAL USE ONLY

ROYCE STREET

SWING TIES

⊙ FD. 3/4" I.P. w/LS 2788
PER. CRFB 964/70 DN.
0.12' RESET w/PK. NAIL
+ CITY SUR TAG FLUSH

△ SET "C" NL. + CITY
SUR. TAG ON T/C



- × FD. Ramset Nail on T/C ● FD. LD. & TK. on T/C
- FD. "C" Nail on T/C ○ Set LD. & TK. on T/C

P.K. and City Engineer tag to be set @
surface after street construction is
complete. (If possible)

Scale: 1" = 20'

Date: 12/17/03

Drawn by: SURVEY

F.B.:

TR-Sec: T3SR5W-5

OFFICIAL TIE PLAT

CITY OF RIVERSIDE

*These ties are for the purpose of perpetuating the found
monumentation. No claim is made as to the relationship of
the points or lines shown hereon to true boundary locations.*



Sheet 1 of 1
Cadme MB: 66-2