

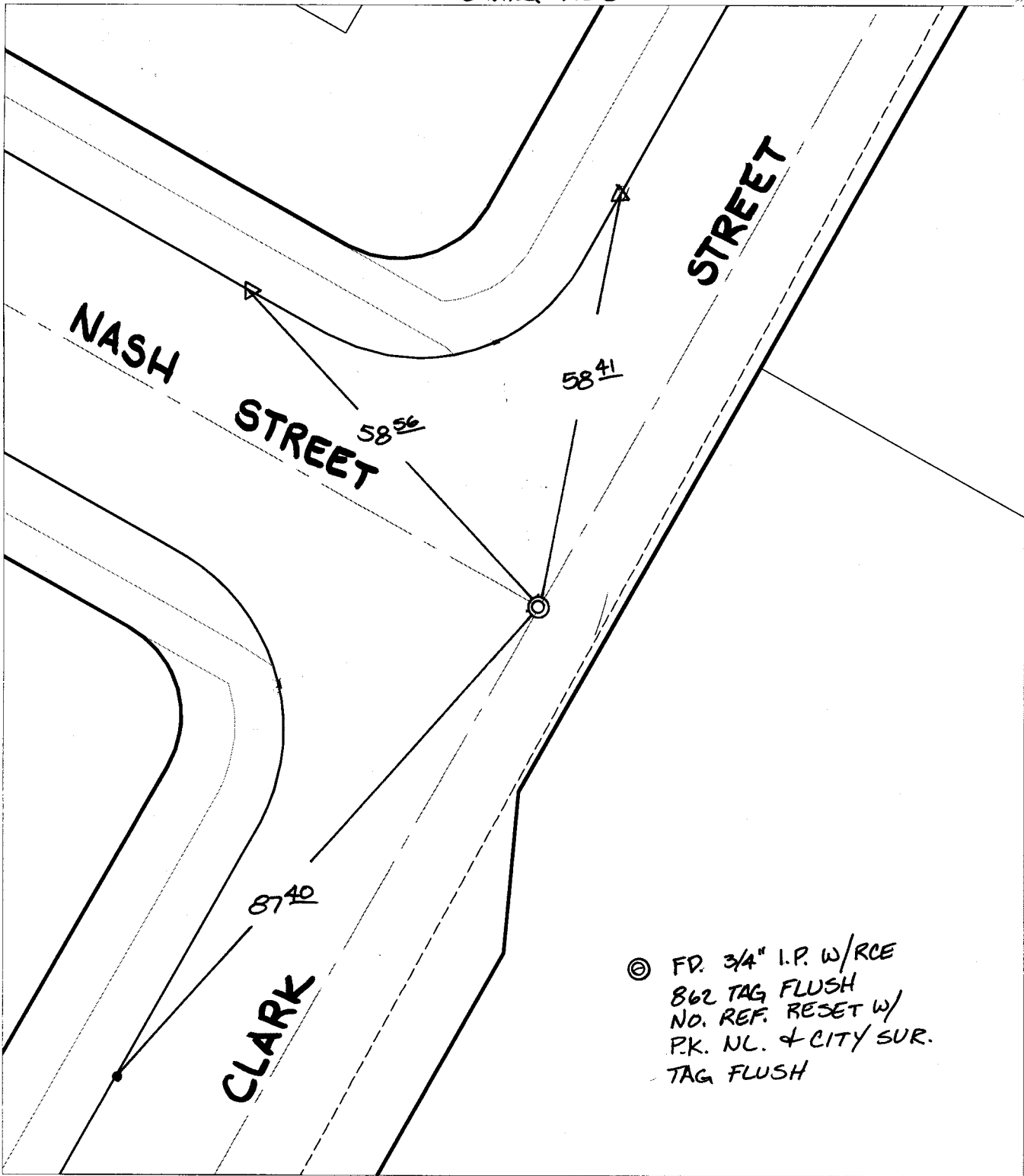
Street:

CLARK ST

X-Street:  
OFFICIAL USE ONLY

NASH ST

SWING TIES



⊗ FD. 3/4" I.P. W/RCE  
 862 TAG FLUSH  
 NO. REF. RESET W/  
 P.K. NL. & CITY SUR.  
 TAG FLUSH

- ⊗ FD. Ramset Nail on T/C      ● FD. LD. & TK. on T/C
- FD. "C" Nail on T/C      ○ Set LD. & TK. on T/C

P.K. and City Engineer tag to be set @ surface after street construction is complete. (If possible)

Scale: 1" = 20'  
 Date: 01/17/03  
 Drawn by: survey  
 F.B.:  
 TR-Sec: -

## OFFICIAL TIE PLAT

### CITY OF RIVERSIDE

*These ties are for the purpose of perpetuating the found monumentation. No claim is made as to the relationship of the points or lines shown hereon to true boundary locations.*



Sheet 1 of 1  
 Cadme MB: 10-8