

C 11877.TIF

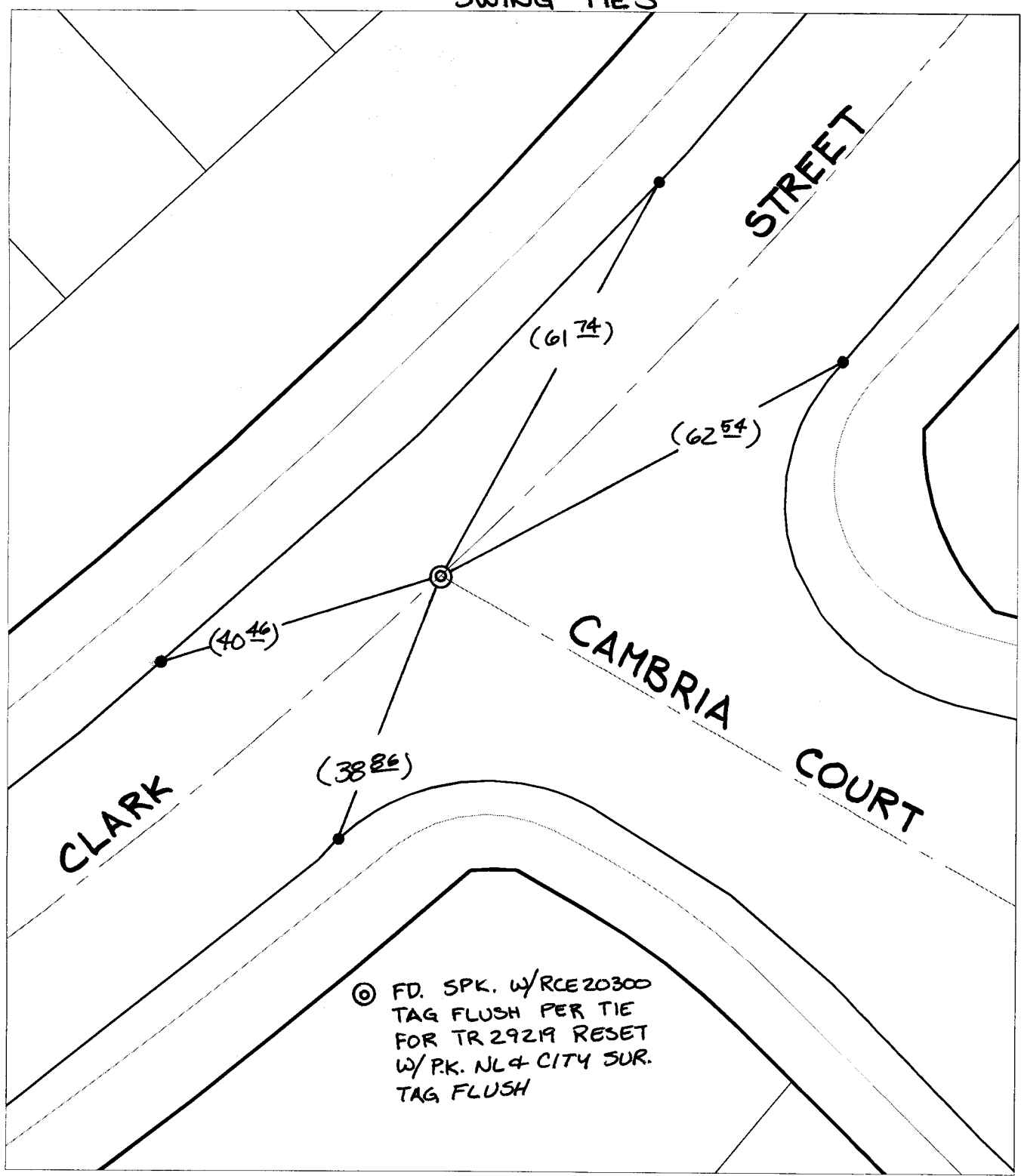
Street:

CLARK STREET

OFFICIAL USE ONLY X-Street:

CAMBRIA COURT

SWING TIES



⊗ FD. SPK. w/RCE20300  
 TAG FLUSH PER TIE  
 FOR TR 29219 RESET  
 w/P.K. NL & CITY SUR.  
 TAG FLUSH

✕ FD. Ramset Nail on T/C  
 ■ FD. "C" Nail on T/C

● FD. LD. & TK. on T/C  
 ○ Set LD. & TK. on T/C

P.K. and City Engineer tag to be set @  
 surface after street construction is  
 complete. (If possible)

Scale: 1" = 20'  
 Date: 07/02/04  
 Drawn by: SURVEY  
 F.B.:  
 TR-Sec: -

**OFFICIAL TIE PLAT**  
**CITY OF RIVERSIDE**

*These ties are for the purpose of perpetuating the found  
 monumentation. No claim is made as to the relationship of  
 the points or lines shown hereon to true boundary locations.*



Sheet 1 of 1  
 Cadme MB: 10-8