

Street:

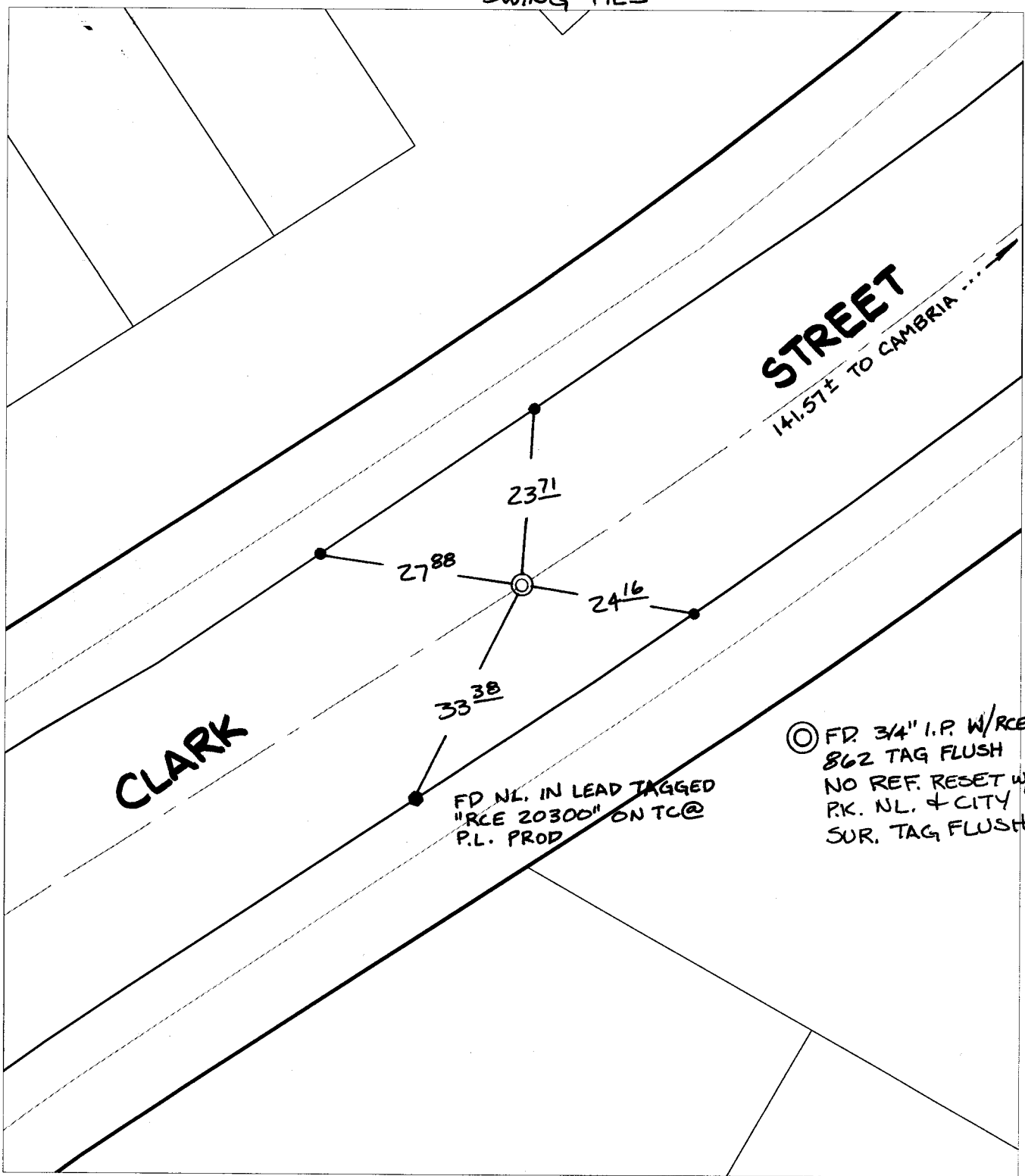
CLARK ST

OFFICIAL USE ONLY

X-Street:

BC SW OF CAMBRIA

SWING TIES



⊙ FD. 3/4" I.P. W/RCE  
 862 TAG FLUSH  
 NO REF. RESET w/  
 P.K. NL. + CITY  
 SUR. TAG FLUSH

FD NL. IN LEAD TAGGED  
 "RCE 20300" ON TC@  
 P.L. PROP

- ✕ FD. Ramset Nail on T/C      ● FD. LD. & TK. on T/C      P.K. and City Engineer tag to be set @ surface after street construction is complete. (If possible)
- FD. "C" Nail on T/C      ○ Set LD. & TK. on T/C

Scale: 1" = 20'  
 Date: 01/17/03  
 Drawn by: survey  
 F.B.:  
 TR-Sec: -

## OFFICIAL TIE PLAT

### CITY OF RIVERSIDE

*These ties are for the purpose of perpetuating the found monumentation. No claim is made as to the relationship of the points or lines shown hereon to true boundary locations.*



Sheet 1 of 1  
 Cadme MB: 10-8