

Street:

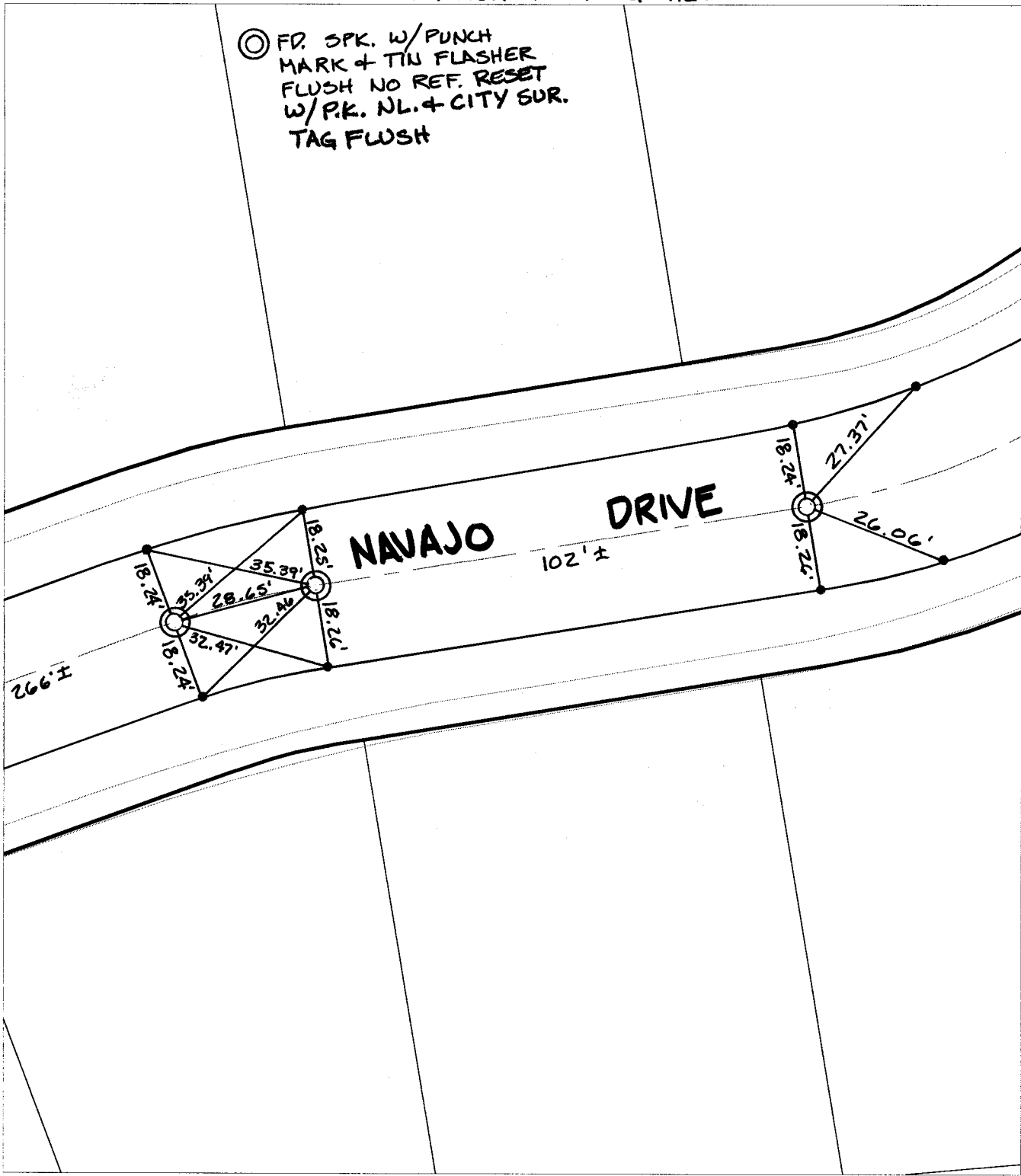
NAVAJO DRIVE

X-Street:  
OFFICIAL USE ONLY

B.C., E.C., & B.C.

TRANSIT + SWING TIES

⊙ FD. SPK. W/PUNCH  
MARK + TIN FLASHER  
FLUSH NO REF. RESET  
W/P.K. NL. + CITY SUR.  
TAG FLUSH



- ✕ FD. Ramset Nail on T/C
- FD. LD. & TK. on T/C
- FD. "C" Nail on T/C
- Set LD. & TK. on T/C
- P.K. and City Engineer tag to be set @ surface after street construction is complete. (If possible)

Scale: 1" = 30'  
 Date: 01/30/03  
 Drawn by: SURVEY  
 F.B.:  
 TR-Sec: T2SR4W-29

**OFFICIAL TIE PLAT**  
 CITY OF RIVERSIDE

*These ties are for the purpose of perpetuating the found monumentation. No claim is made as to the relationship of the points or lines shown hereon to true boundary locations.*

Sheet 1 of 1  
 Cadme MB: 42-7