

C11898.TIF

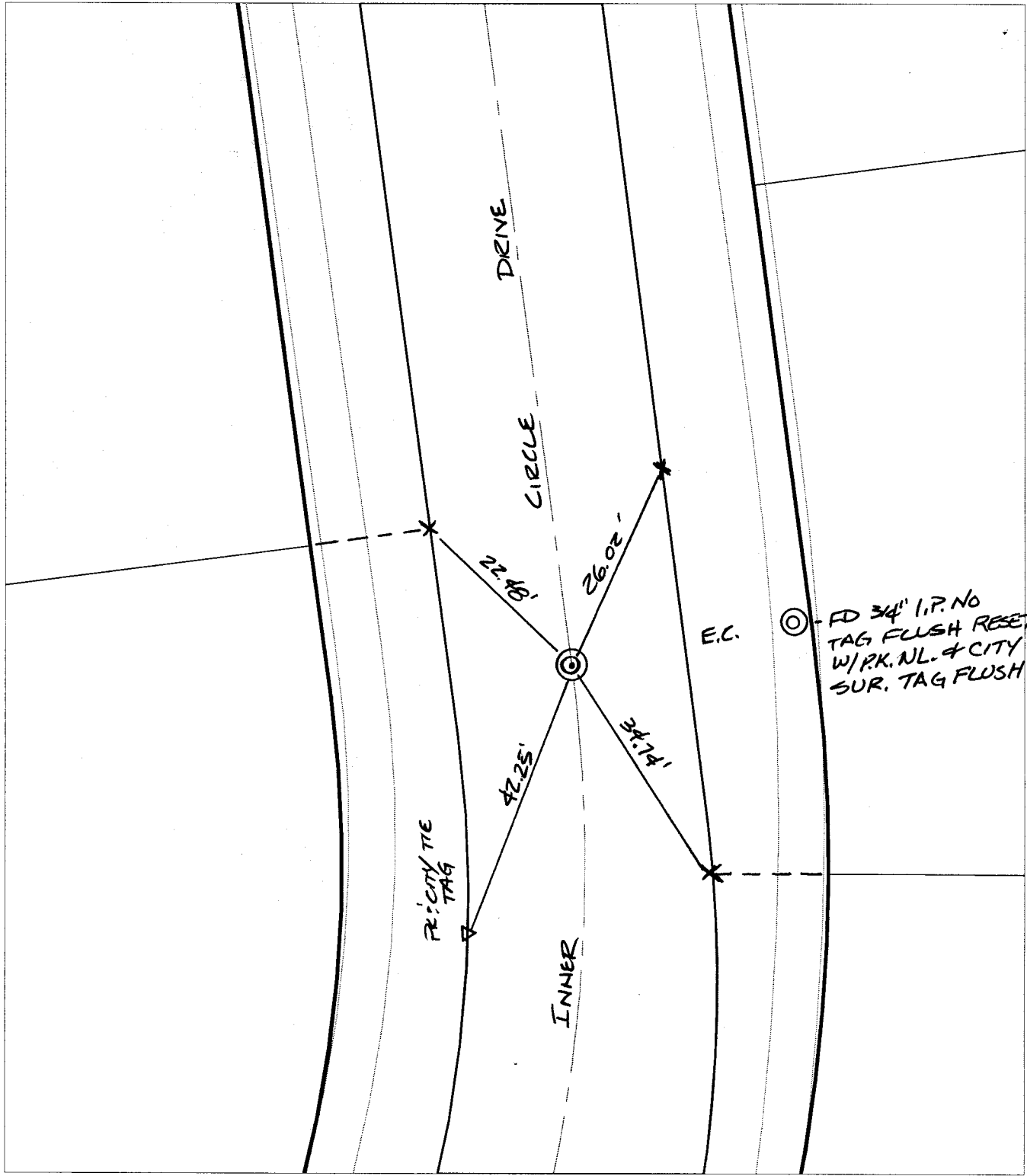
Street:

INNER CIRCLE DRIVE (E/W) X-Street:

E.C. N. OF KNUCLE

OFFICIAL USE ONLY

SWING TIES



- ✕ FD. Ramset Nail on T/C
- FD. LD. & TK. on T/C
- FD. "C" Nail on T/C
- Set LD. & TK. on T/C
- P.K. and City Engineer tag to be set @ surface after street construction is complete. (If possible)

Scale: 1" = 20'

Date: 01/30/03

Drawn by: SURVEY


F.B.:

TR-Sec: T2SR4W-31

## OFFICIAL TIE PLAT

### CITY OF RIVERSIDE

*These ties are for the purpose of perpetuating the found monumentation. No claim is made as to the relationship of the points or lines shown hereon to true boundary locations.*



Sheet 1 of 1

Cadme MB: 56-3