

Street:

TENTH STREET

X-Street:

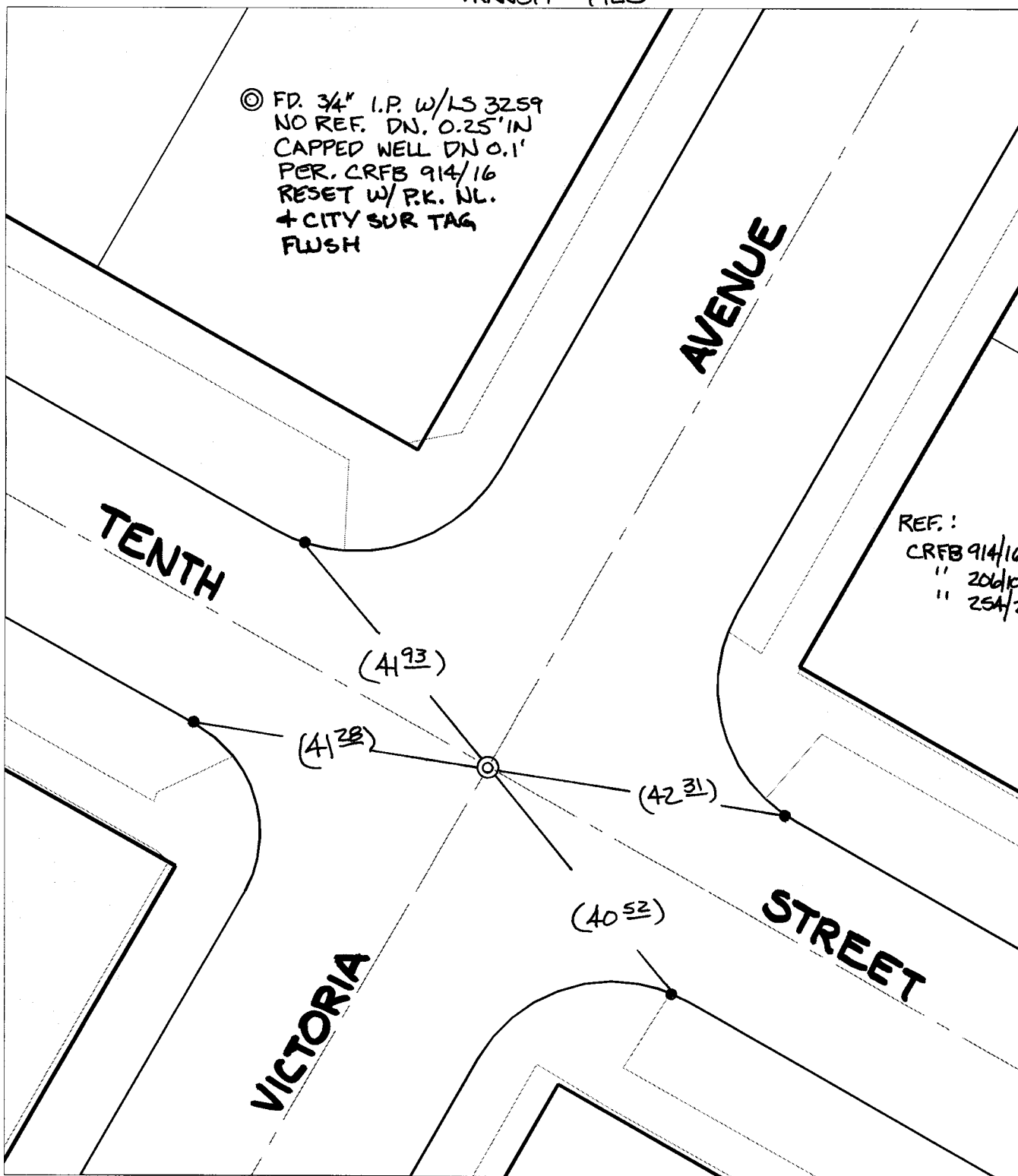
VICTORIA AVENUE

OFFICIAL USE ONLY

TRANSIT TIES

© FD. 3/4" I.P. W/LS 3259
NO REF. DN. 0.25' IN
CAPPED WELL DN 0.1'
PER. CRFB 914/16
RESET W/ P.K. NL.
+ CITY SUR TAG
FLUSH

REF.:
CRFB 914/16
" 206/10-12
" 254/29



✕ FD. Ramset Nail on T/C
■ FD. "C" Nail on T/C

● FD. LD. & TK. on T/C
○ Set LD. & TK. on T/C

P.K. and City Engineer tag to be set @
surface after street construction is
complete. (If possible)

Scale: 1" = 20'

Date: 02/14/03

Drawn by: SURVEY

F.B.:

TR-Sec: T2SR5W-25

OFFICIAL TIE PLAT

CITY OF RIVERSIDE

*These ties are for the purpose of perpetuating the found
monumentation. No claim is made as to the relationship of
the points or lines shown hereon to true boundary locations.*



Sheet 1 of 1

Cadme MB: 40-1