

C 11932.TIF

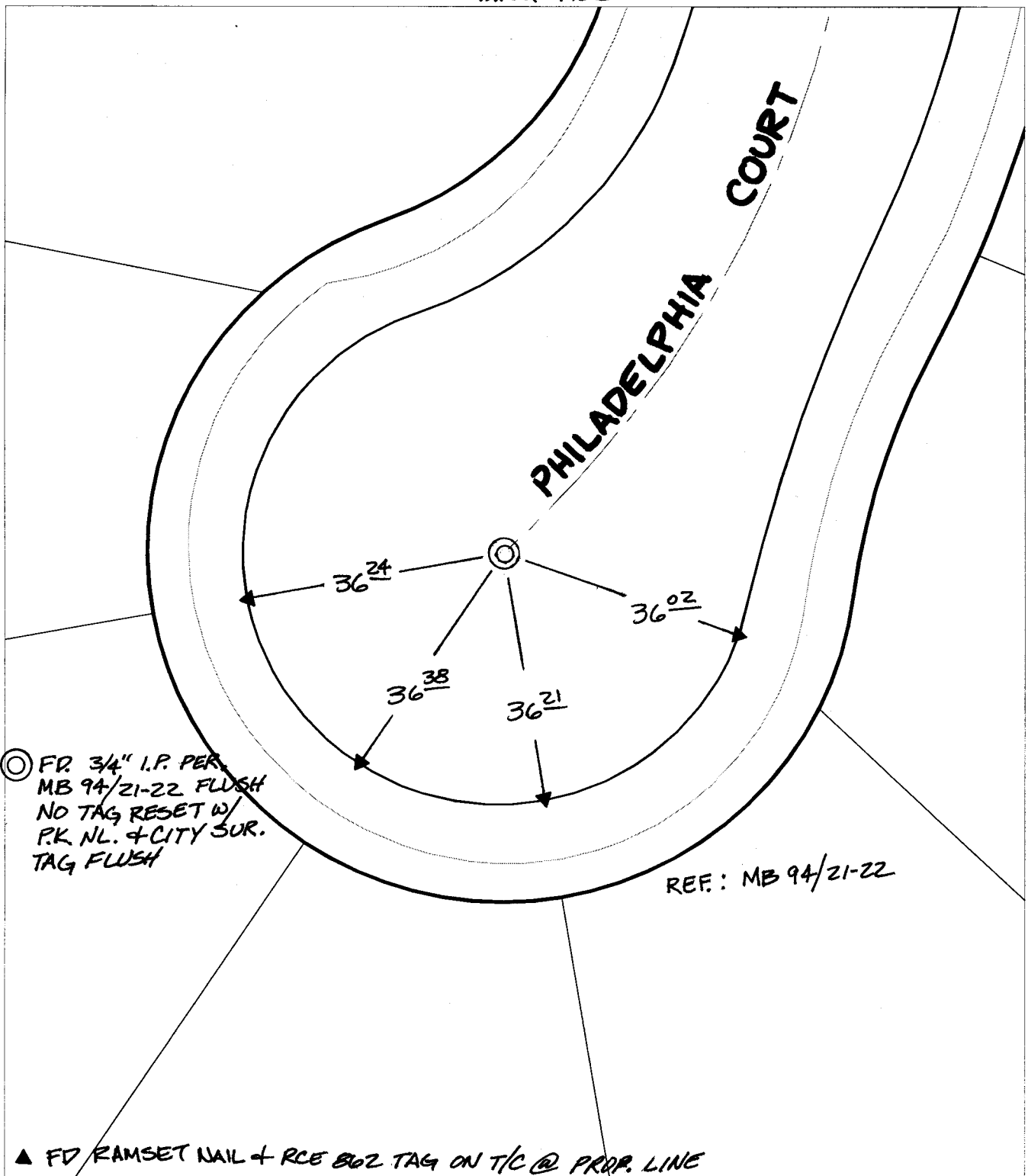
Street:

PHILADELPHIA COURT

X-Street:  
OFFICIAL USE ONLY

CUL-DE-SAC

SWING TIES



REF.: MB 94/21-22

▲ FD RAMSET NAIL + RCE 802 TAG ON T/C @ PROP. LINE

- ✕ FD. Ramset Nail on T/C
- FD. LD. & TK. on T/C
- ▲ P.K. and City Engineer tag to be set @ surface after street construction is complete. (If possible)
- FD. "C" Nail on T/C
- Set LD. & TK. on T/C

Scale: 1" = 20'

Date: 09/30/02


Drawn by: SURVEY

F.B.:

TR-Sec: T3SR6W-23

**OFFICIAL TIE PLAT**  
CITY OF RIVERSIDE

*These ties are for the purpose of perpetuating the found monumentation. No claim is made as to the relationship of the points or lines shown hereon to true boundary locations.*

  
 Sheet 1 of 1  
 Cadme MB: 79-7