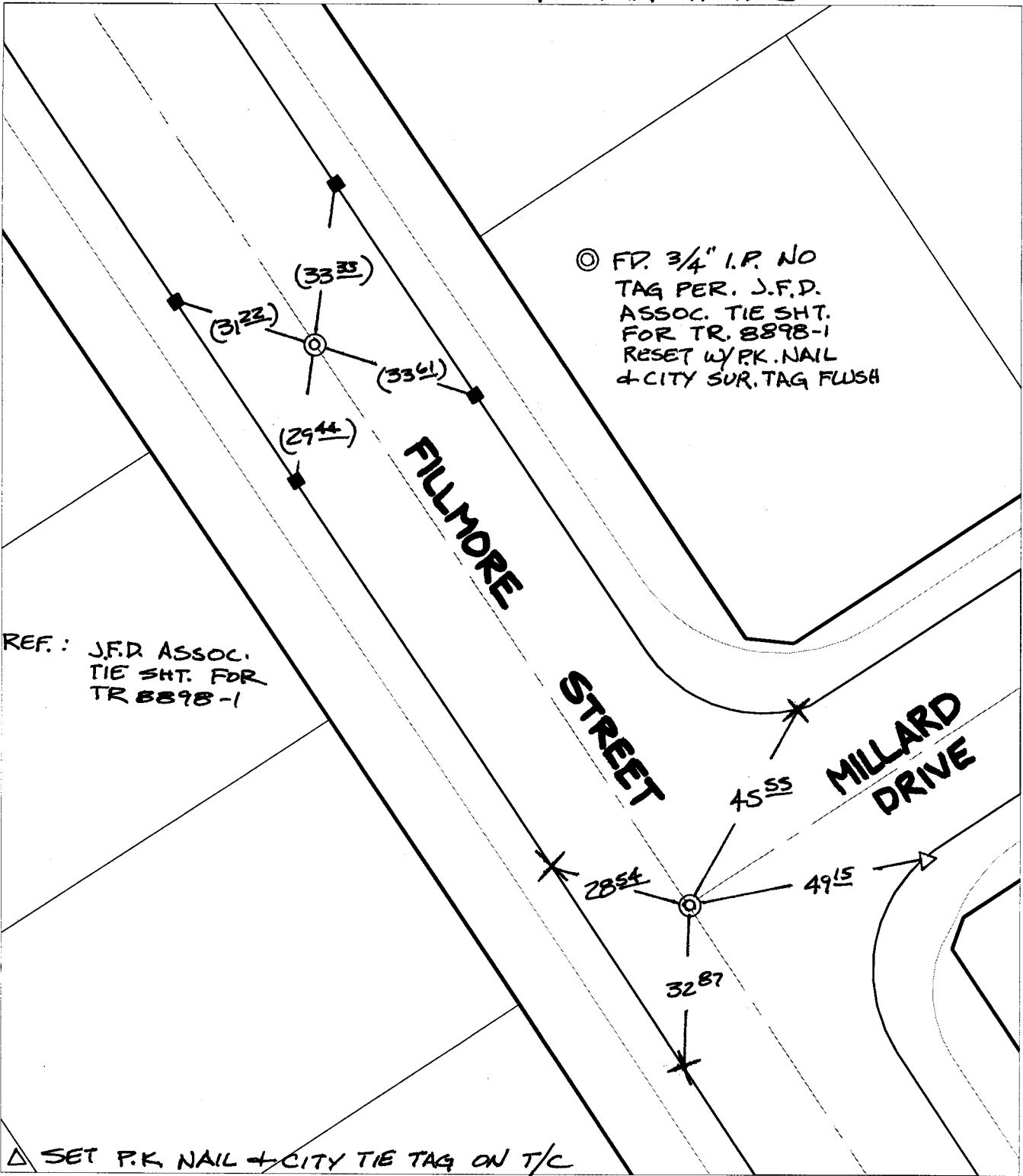


SWING & TRANSIT TIES



REF.: J.F.D. ASSOC.
TIE SHT. FOR
TR 8898-1

△ SET P.K. NAIL + CITY TIE TAG ON T/C

- × FD. Ramset Nail on T/C ● FD. LD. & TK. on T/C
- FD. "C" Nail on T/C ○ Set LD. & TK. on T/C

P.K. and City Engineer tag to be set @
surface after street construction is
complete. (If possible)

Scale: 1" = 30'
 Date: 09/30/02
 Drawn by: SURVEY
 F.B.:
 TR-Sec: T3SR6W-23

OFFICIAL TIE PLAT
CITY OF RIVERSIDE

*These ties are for the purpose of perpetuating the found
 monumentation. No claim is made as to the relationship of
 the points or lines shown hereon to true boundary locations.*



Sheet 1 of 1
 Cadme MB: 94-2