

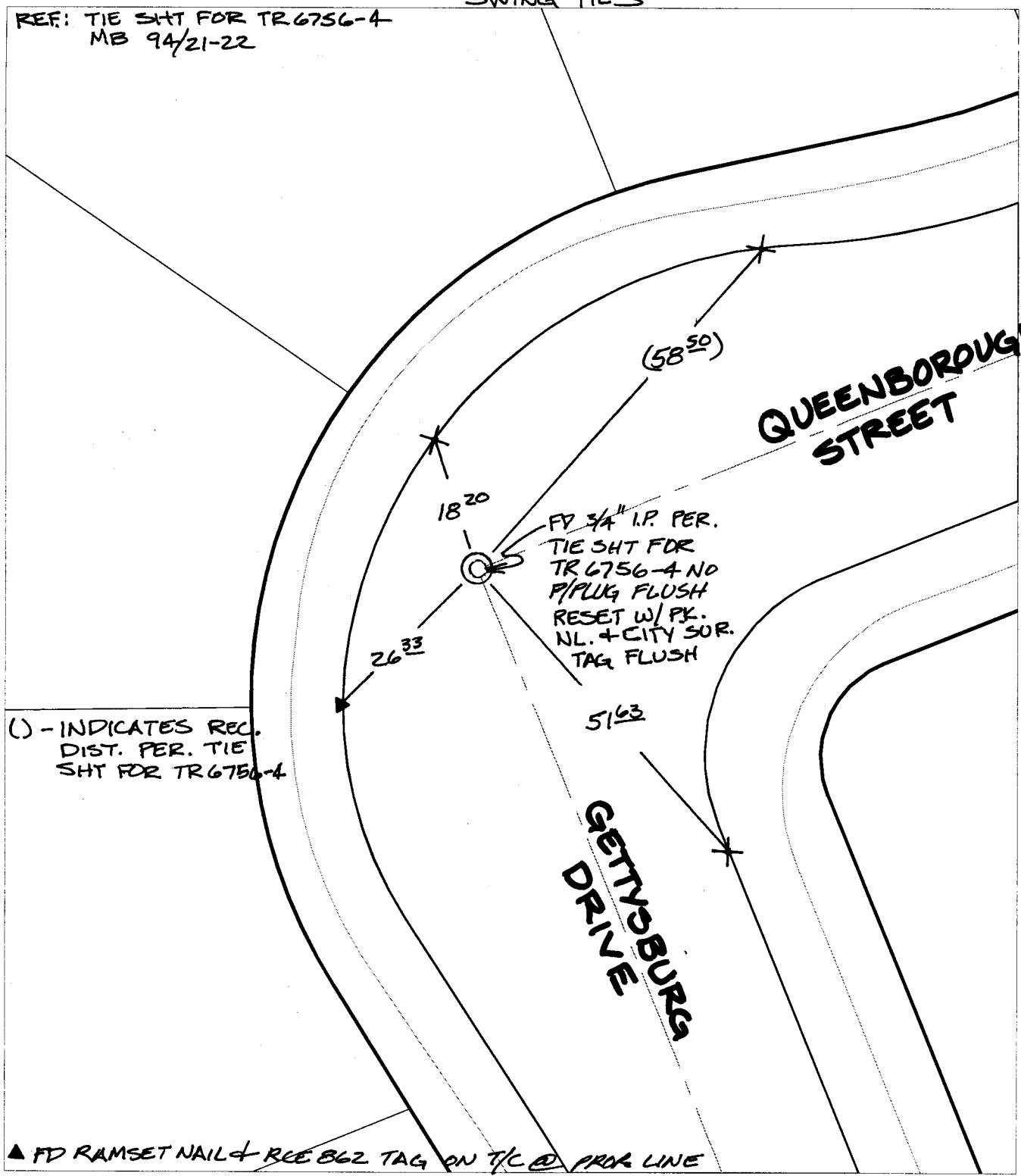
C11945.TIF

Street: QUEENBOROUGH STREET X-Street: GETTYSBURG DRIVE

OFFICIAL USE ONLY

REF: TIE SHT FOR TR 6756-4  
MB 94/21-22

SWING TIES



- ✕ FD. Ramset Nail on T/C
- FD. LD. & TK. on T/C
- ▲ FD. "C" Nail on T/C
- Set LD. & TK. on T/C
- P.K. and City Engineer tag to be set @ surface after street construction is complete. (If possible)

Scale: 1" = 20'  
 Date: 09/30/02  
 Drawn by: SURVEY  
 F.B.:  
 TR-Sec: T3SR6W-23

## OFFICIAL TIE PLAT

### CITY OF RIVERSIDE

*These ties are for the purpose of perpetuating the found monumentation. No claim is made as to the relationship of the points or lines shown hereon to true boundary locations.*



Sheet 1 of 1  
 Cadme MB: 79-7