

Street:

GOLDEN AVENUE

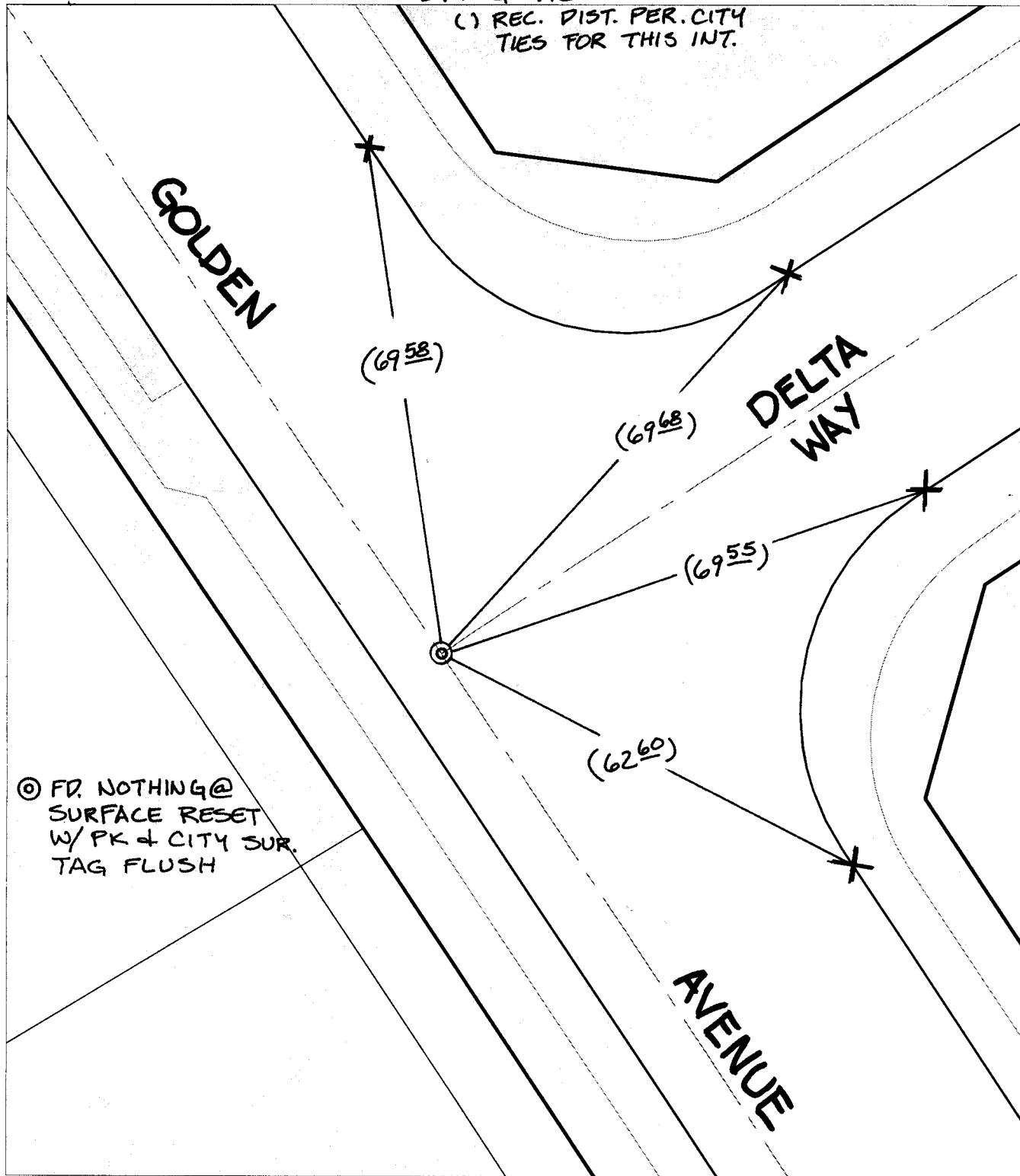
OFFICIAL USE ONLY

X-Street:

DELTA WAY

SWING TIES

(1) REC. DIST. PER. CITY TIES FOR THIS INT.



⊙ FD. NOTHING @ SURFACE RESET W/ PK & CITY SUR. TAG FLUSH

- ✕ FD. Ramset Nail on T/C
- FD. LD. & TK. on T/C
- FD. "C" Nail on T/C
- Set LD. & TK. on T/C

P.K. and City Engineer tag to be set @ surface after street construction is complete. (If possible)

Scale: 1" = 20'

Date: 11/20/04

Drawn by: SURVEY

F.B.:

TR-Sec: T3SR6W-15

# OFFICIAL TIE PLAT

## CITY OF RIVERSIDE

*These ties are for the purpose of perpetuating the found monumentation. No claim is made as to the relationship of the points or lines shown hereon to true boundary locations.*



Sheet 1 of 1

Cadme MB: 78-2