

Street:

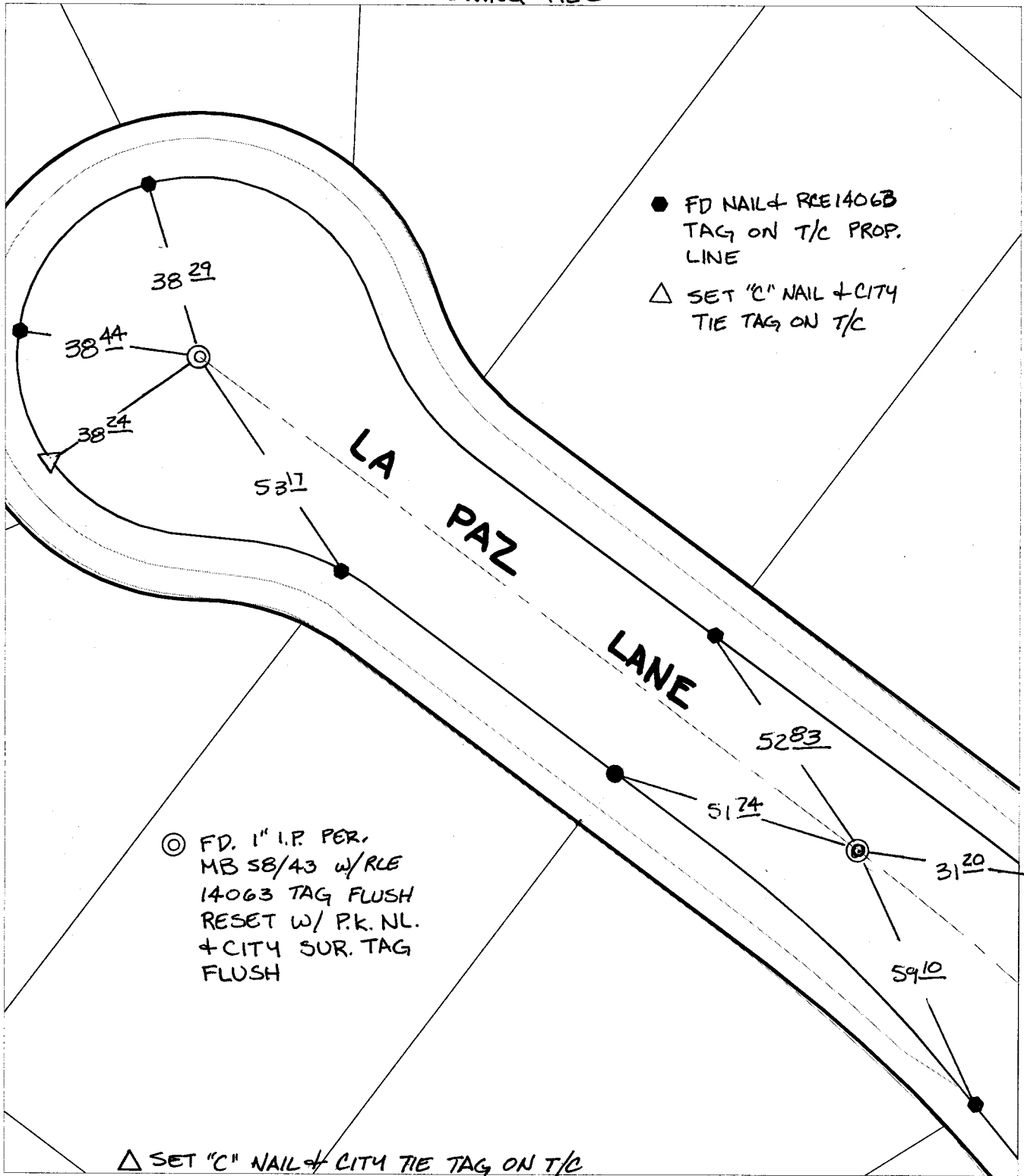
LA PAZ LANE

OFFICIAL USE ONLY

X-Street:

CUL-DE-SAC

SWING TIES



- FD NAIL + RCE1406B TAG ON T/C PROP. LINE
- △ SET "C" NAIL + CITY TIE TAG ON T/C

○ FD. 1" I.P. PER. MB SB/43 w/RLE 14063 TAG FLUSH RESET W/ P.K. NL. + CITY SUR. TAG FLUSH

△ SET "C" NAIL + CITY TIE TAG ON T/C

- × FD. Ramset Nail on T/C
- FD. LD. & TK. on T/C
- FD. "C" Nail on T/C
- Set LD. & TK. on T/C

P.K. and City Engineer tag to be set @ surface after street construction is complete. (If possible)

Scale: 1" = 30'  
 Date: 04/29/05  
 Drawn by: survey  
 F.B.:  
 TR-Sec: -

## OFFICIAL TIE PLAT

### CITY OF RIVERSIDE

*These ties are for the purpose of perpetuating the found monumentation. No claim is made as to the relationship of the points or lines shown hereon to true boundary locations.*



Sheet 1 of 1  
 Cadme MB: 24-1