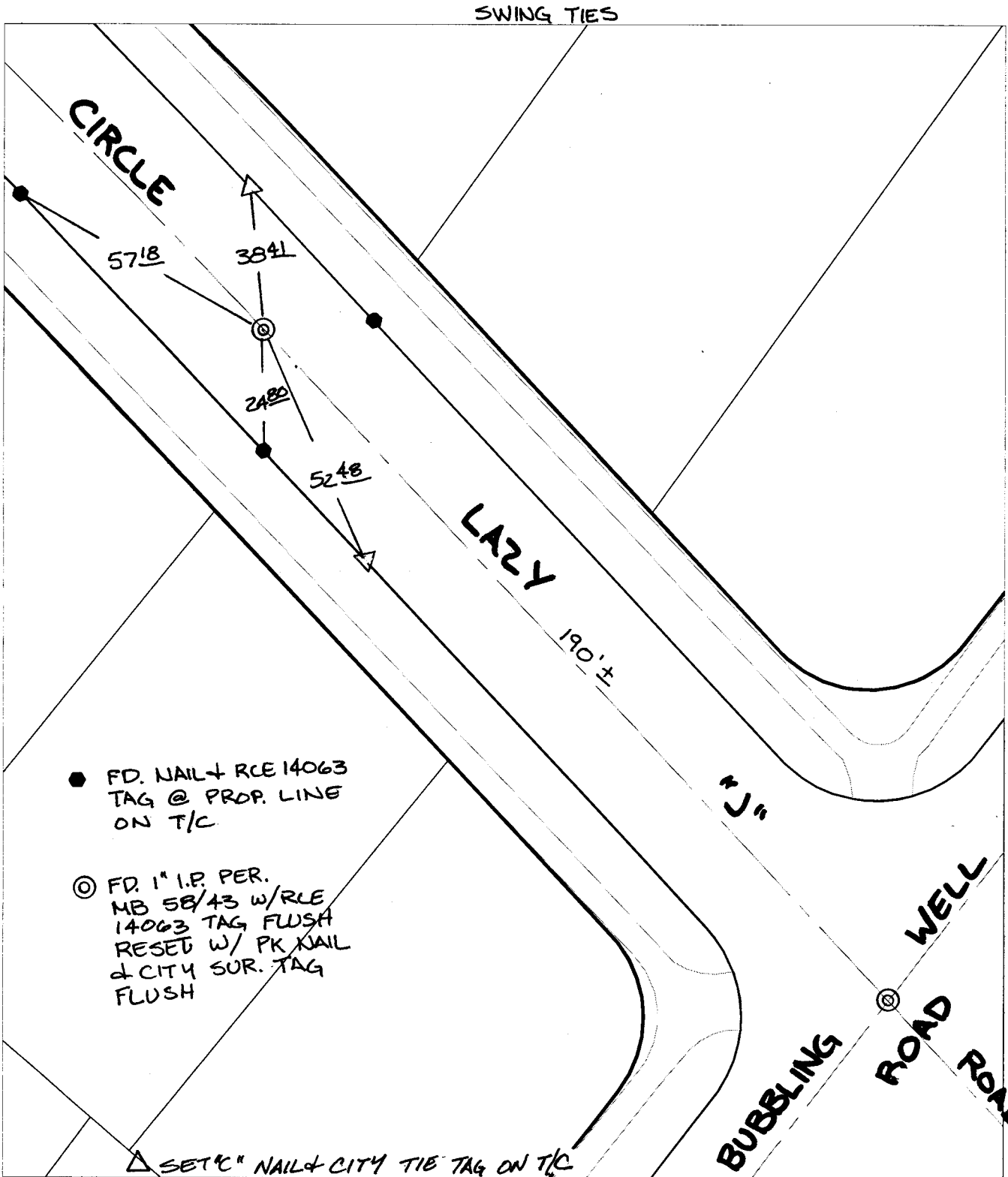


Street:

CIRCLE LAZY 'J' ROAD

OFFICIAL USE ONLY

X-Street BC NW OF BUBBLING WELL



● FD. NAIL & RCE 14063 TAG @ PROP. LINE ON T/C

⊙ FD. 1" I.P. PER. MB 58/43 w/RLE 14063 TAG FLUSH RESET W/ PK NAIL & CITY SUR. TAG FLUSH

△ SET 1/2" NAIL & CITY TIE TAG ON T/C

- ✕ FD. Ramset Nail on T/C
- FD. LD. & TK. on T/C
- FD. "C" Nail on T/C
- Set LD. & TK. on T/C
- P.K. and City Engineer tag to be set @ surface after street construction is complete. (If possible)

Scale: 1" = 30'

Date: 04/29/05

Drawn by: survey

F.B.:

TR-Sec: -

**OFFICIAL TIE PLAT**  
CITY OF RIVERSIDE

*These ties are for the purpose of perpetuating the found monumentation. No claim is made as to the relationship of the points or lines shown hereon to true boundary locations.*

Sheet 1 of 1

Cadme MB: 24-1