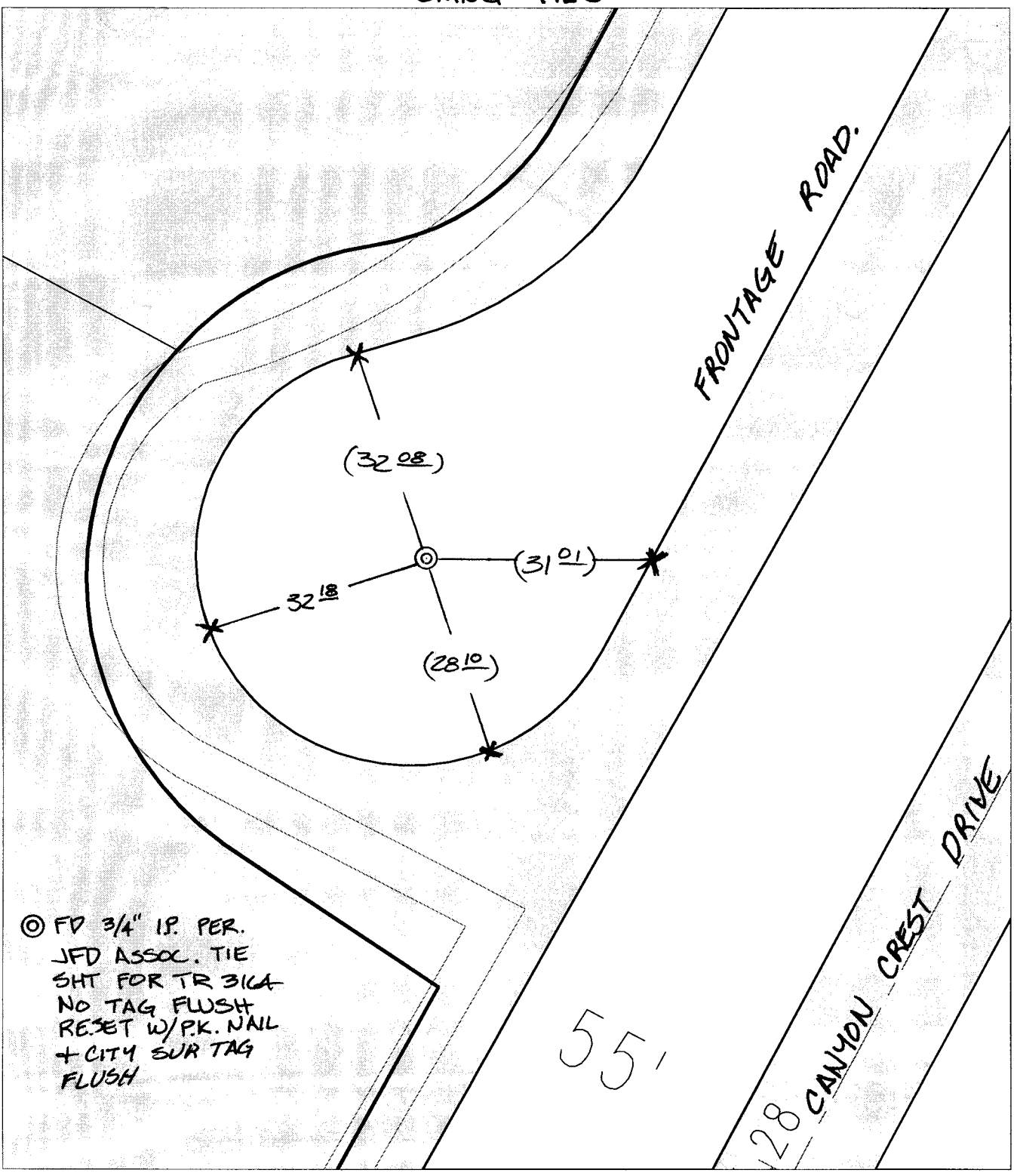


C12021. TIF

Street: CANYON CREST DRIVE X-Street: CUL-DE-SAC
OFFICIAL USE ONLY

SWING TIES



⊙ FD 3/4" IP. PER.
 JFD ASSOC. TIE
 SHT FOR TR 31CA
 NO TAG FLUSH
 RESET W/P.K. NAIL
 + CITY SUR TAG
 FLUSH

55'

- ✕ FD. Ramset Nail on T/C
- FD. LD. & TK. on T/C
- FD. "C" Nail on T/C
- Set LD. & TK. on T/C
- P.K. and City Engineer tag to be set @ surface after street construction is complete. (If possible)

Scale: 1" = 20'
 Date: 12/30/03
 Drawn by: SURVEY
 F.B.:
 TR-Sec: T2SR4W-32

OFFICIAL TIE PLAT
CITY OF RIVERSIDE

These ties are for the purpose of perpetuating the found monumentation. No claim is made as to the relationship of the points or lines shown hereon to true boundary locations.

Sheet 1 of 1
 Cadme MB: 56-4