

Street:

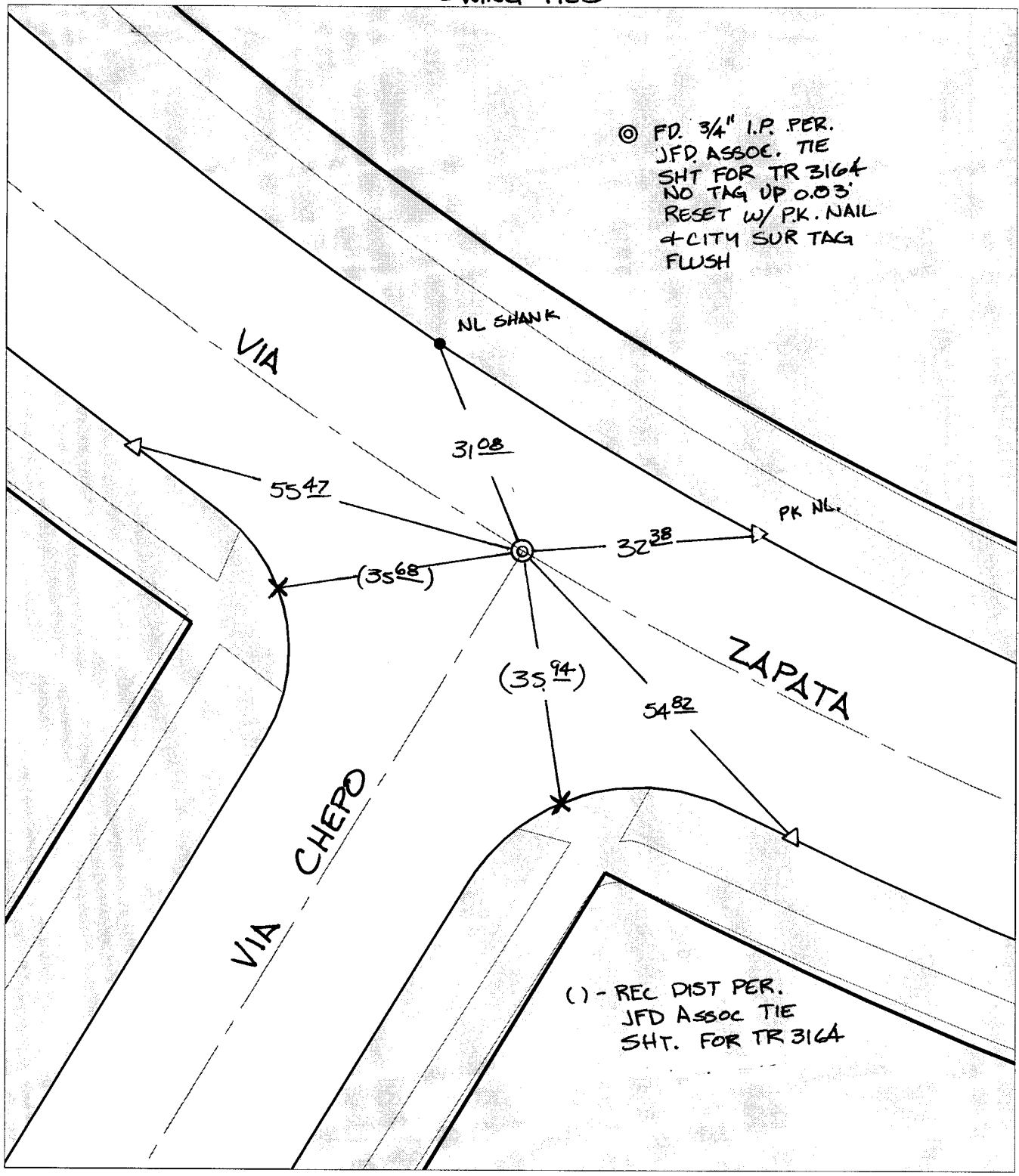
VIA ZAPATA

X-Street:  
OFFICIAL USE ONLY

VIA CHEPO

SWING TIES

⊙ FD. 3/4" I.P. PER.  
JFD ASSOC. TIE  
SHT FOR TR 3164  
NO TAG UP 0.03'  
RESET W/ P.K. NAIL  
+ CITY SUR TAG  
FLUSH



- ✕ FD. Ramset Nail on T/C    ● FD. LD. & TK. on T/C    P.K. and City Engineer tag to be set @ surface after street construction is complete. (If possible)
- FD. "C" Nail on T/C      ○ Set LD. & TK. on T/C

Scale: 1" = 20'  
 Date: 12/30/03  
 Drawn by: SURVEY  
 F.B.:  
 TR-Sec: T2SR4W-31

**OFFICIAL TIE PLAT**  
**CITY OF RIVERSIDE**

*These ties are for the purpose of perpetuating the found monumentation. No claim is made as to the relationship of the points or lines shown hereon to true boundary locations.*

Sheet 1 of 1  
 Cadme MB: 56-4