

Street:

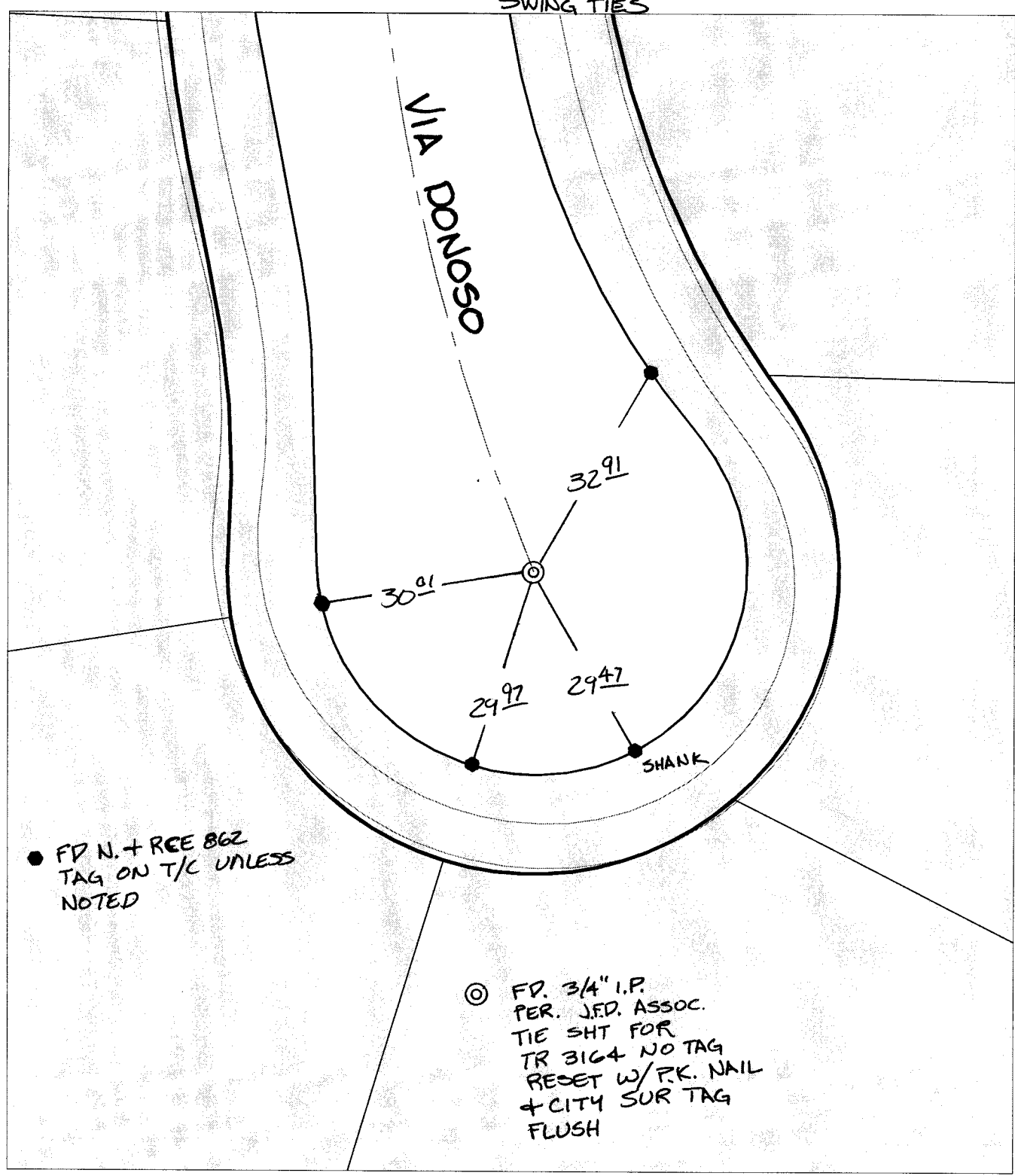
VIA DONOSO

X-Street:
OFFICIAL USE ONLY

CUL-DE-SAC

SWING TIES

VIA DONOSO



● FD N. + REE 862 TAG ON T/C UNLESS NOTED

⊙ FD. 3/4" I.P. PER. J.F.D. ASSOC. TIE SHT FOR TR 3164 NO TAG RESET W/P.K. NAIL + CITY SUR TAG FLUSH

- ✕ FD. Ramset Nail on T/C
- FD. "C" Nail on T/C

- FD. LD. & TK. on T/C
- Set LD. & TK. on T/C

P.K. and City Engineer tag to be set @ surface after street construction is complete. (If possible)

Scale: 1" = 20'

Date: 12/30/03

Drawn by: SURVEY

F.B.:

TR-Sec: T2SR4W-31

OFFICIAL TIE PLAT

CITY OF RIVERSIDE

These ties are for the purpose of perpetuating the found monumentation. No claim is made as to the relationship of the points or lines shown hereon to true boundary locations.



Sheet 1 of 1

Cadme MB: 56-4