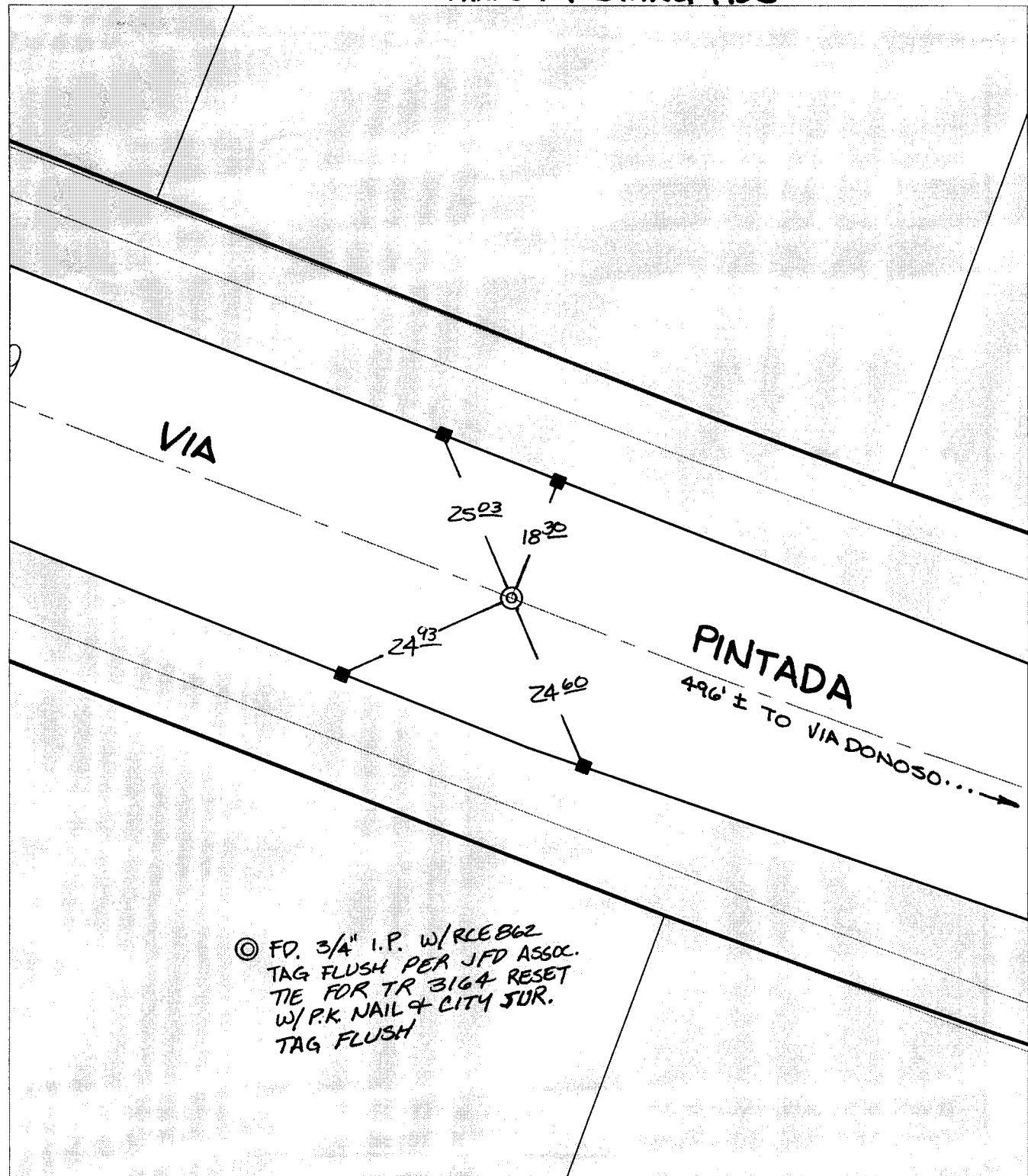


Street:

VIA PINTADA

X-Street: BC W OF VIA DONOSO  
OFFICIAL USE ONLY

### TRANSIT & SWING TIES



⊗ FD. 3/4" I.P. w/RCE862  
TAG FLUSH PER JFD ASSOC.  
TIE FOR TR 3164 RESET  
w/P.K. NAIL & CITY SUR.  
TAG FLUSH


- ⊗ FD. Ramset Nail on T/C
- FD. LD. & TK. on T/C
- FD. "C" Nail on T/C
- Set LD. & TK. on T/C
- P.K. and City Engineer tag to be set @ surface after street construction is complete. (If possible)

Scale: 1" = 20'  
Date: 12/30/03  
Drawn by: SURVEY  
F.B.:  
TR-Sec: T2SR4W-31

## OFFICIAL TIE PLAT

### CITY OF RIVERSIDE

*These ties are for the purpose of perpetuating the found monumentation. No claim is made as to the relationship of the points or lines shown hereon to true boundary locations.*



Sheet 1 of 1  
Cadme MB: 56-2