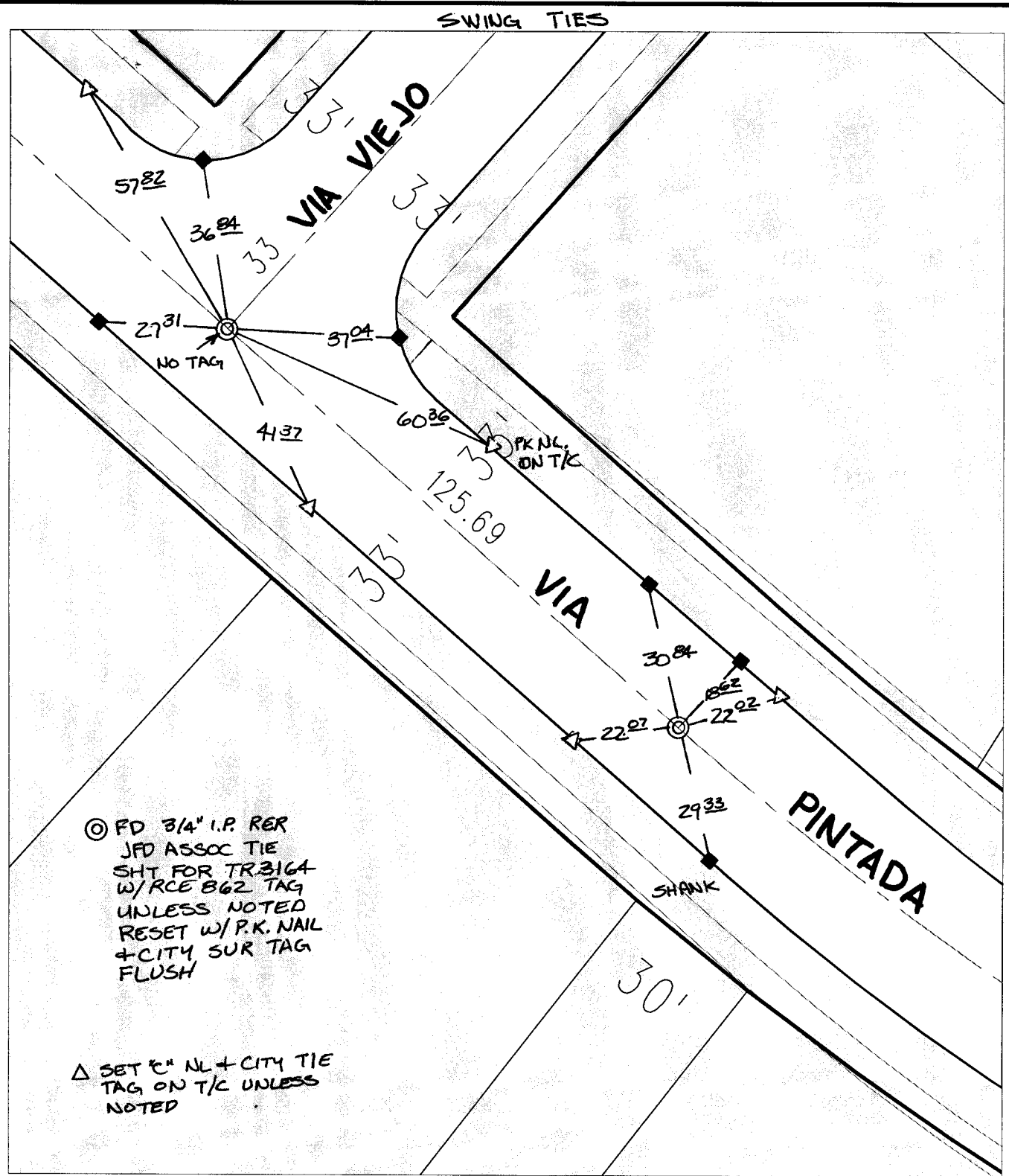


Street:

VIA VIEJO

X-Street:
OFFICIAL USE ONLY

VIA PINTADA



⊙ FD 3/4" I.P. RER
JFD ASSOC TIE
SHT FOR TR 3164
W/RCE 862 TAG
UNLESS NOTED
RESET W/P.K. NAIL
+ CITY SUR TAG
FLUSH

△ SET 6" NL + CITY TIE
TAG ON T/C UNLESS
NOTED

× FD. Ramset Nail on T/C
■ FD. "C" Nail on T/C


● FD. LD. & TK. on T/C
○ Set LD. & TK. on T/C

P.K. and City Engineer tag to be set @
surface after street construction is
complete. (If possible)

Scale: 1" = 30'
Date: 12/30/03
Drawn by: SURVEY
F.B.:
TR-Sec: T2SR4W-31

OFFICIAL TIE PLAT
CITY OF RIVERSIDE

*These ties are for the purpose of perpetuating the found
monumentation. No claim is made as to the relationship of
the points or lines shown hereon to true boundary locations.*



Sheet 1 of 1
Cadme MB: 56-2