

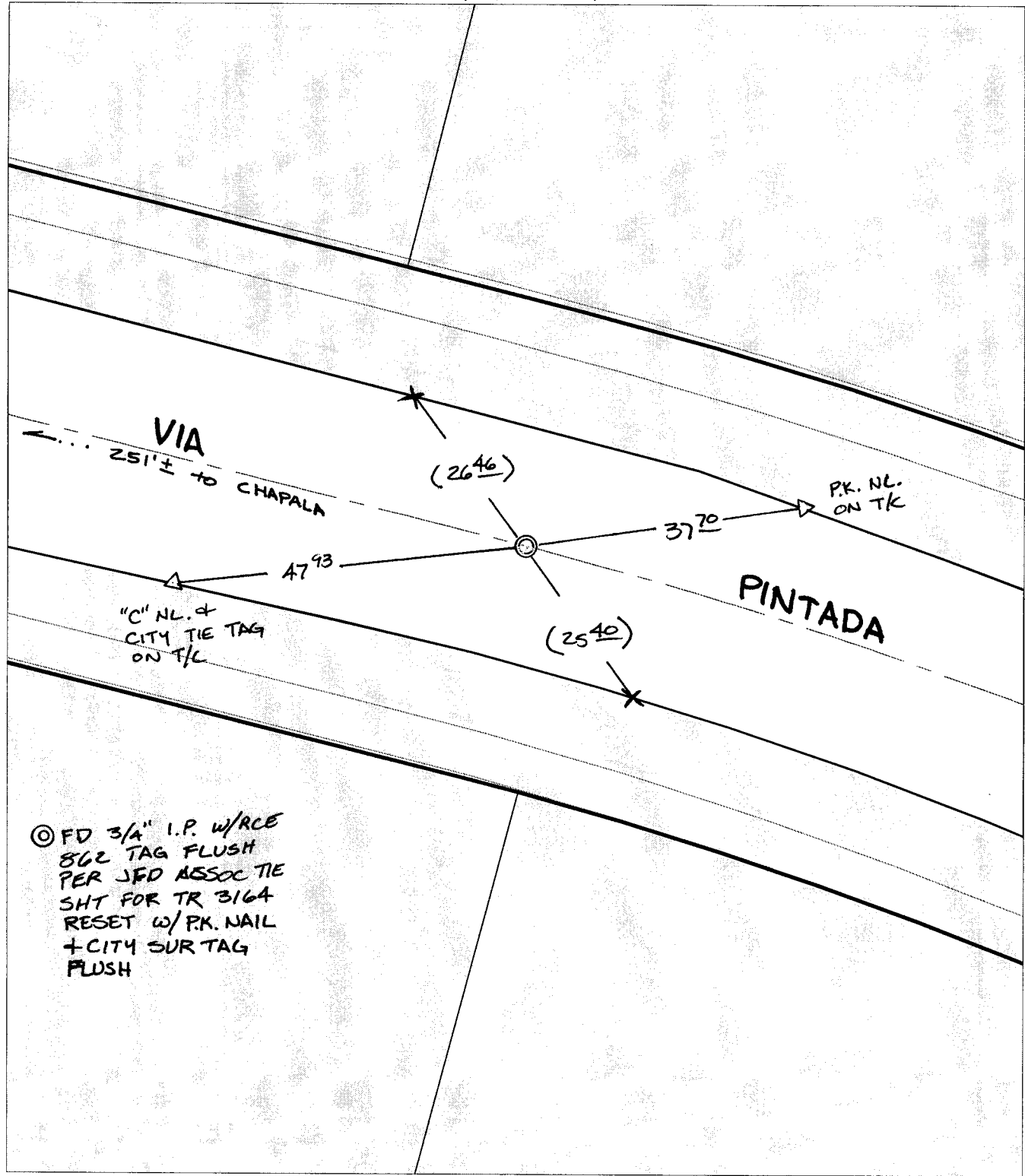
Street:

VIA PINTADA

X-Street: OFFICIAL USE ONLY

BC E OF CHAPALA

TRANSIT + SWING TIES



⊙ FD 3/4" I.P. w/RCE
 862 TAG FLUSH
 PER JFD ASSOC TIE
 SHT FOR TR 3164
 RESET w/P.K. NAIL
 + CITY SUR TAG
 FLUSH

- ✕ FD. Ramset Nail on T/C
- FD. LD. & TK. on T/C
- Set LD. & TK. on T/C
- FD. "C" Nail on T/C
- P.K. and City Engineer tag to be set @ surface after street construction is complete. (If possible)

Scale: 1" = 20'
 Date: 12/30/03
 Drawn by: SURVEY
 F.B.:
 TR-Sec: T2SR4W-31

OFFICIAL TIE PLAT
CITY OF RIVERSIDE

These ties are for the purpose of perpetuating the found monumentation. No claim is made as to the relationship of the points or lines shown hereon to true boundary locations.

Sheet 1 of 1
 Cadme MB: 56-2