

SWING TIES

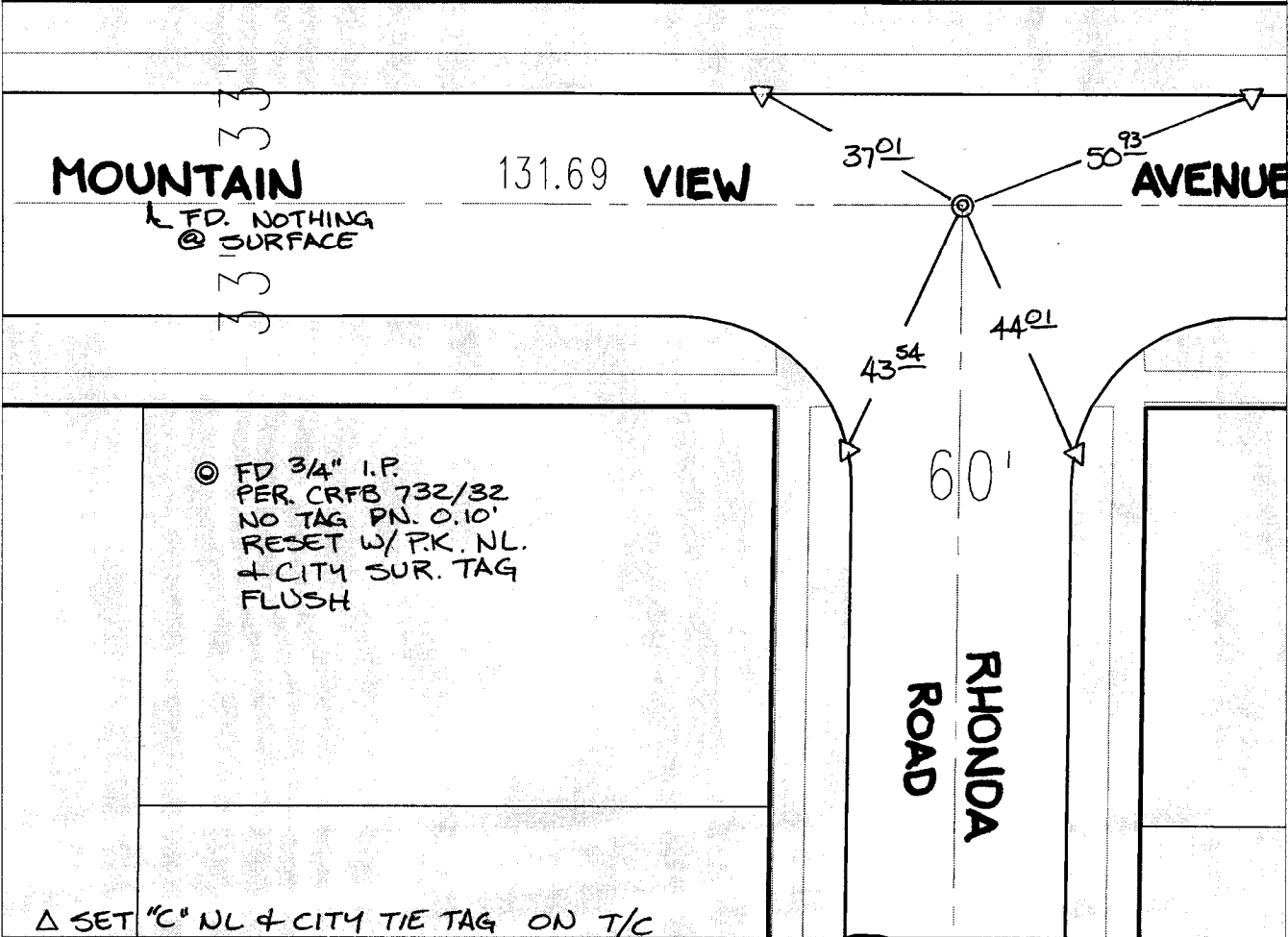
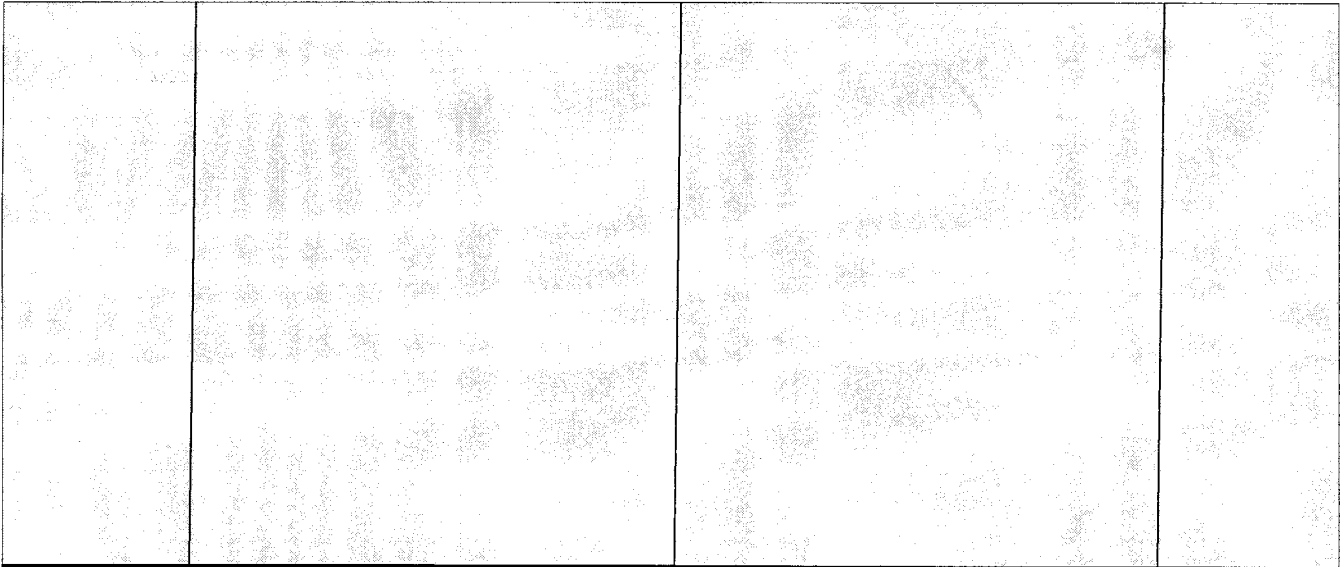
Street:

MOUNTAIN VIEW AVENUE

X-Street:

RHONDA ROAD

OFFICIAL USE ONLY



- ✕ FD. Ramset Nail on T/C    ● FD. LD. & TK. on T/C    P.K. and City Engineer tag to be set @ surface after street construction is complete. (if possible)
- FD. "C" Nail on T/C    ○ Set LD. & TK. on T/C

Scale: 1" = 30'  
 Date: 02/16/04  
 Drawn by: SURVEY  
 F.B.:  
 TR-Sec: T2SR5W-29

**OFFICIAL TIE PLAT**  
**CITY OF RIVERSIDE**

*These ties are for the purpose of perpetuating the found monumentation. No claim is made as to the relationship of the points or lines shown hereon to true boundary locations.*

Sheet 1 of 1  
 Cadme MB: 37-7