

C12063.TIF

Street:

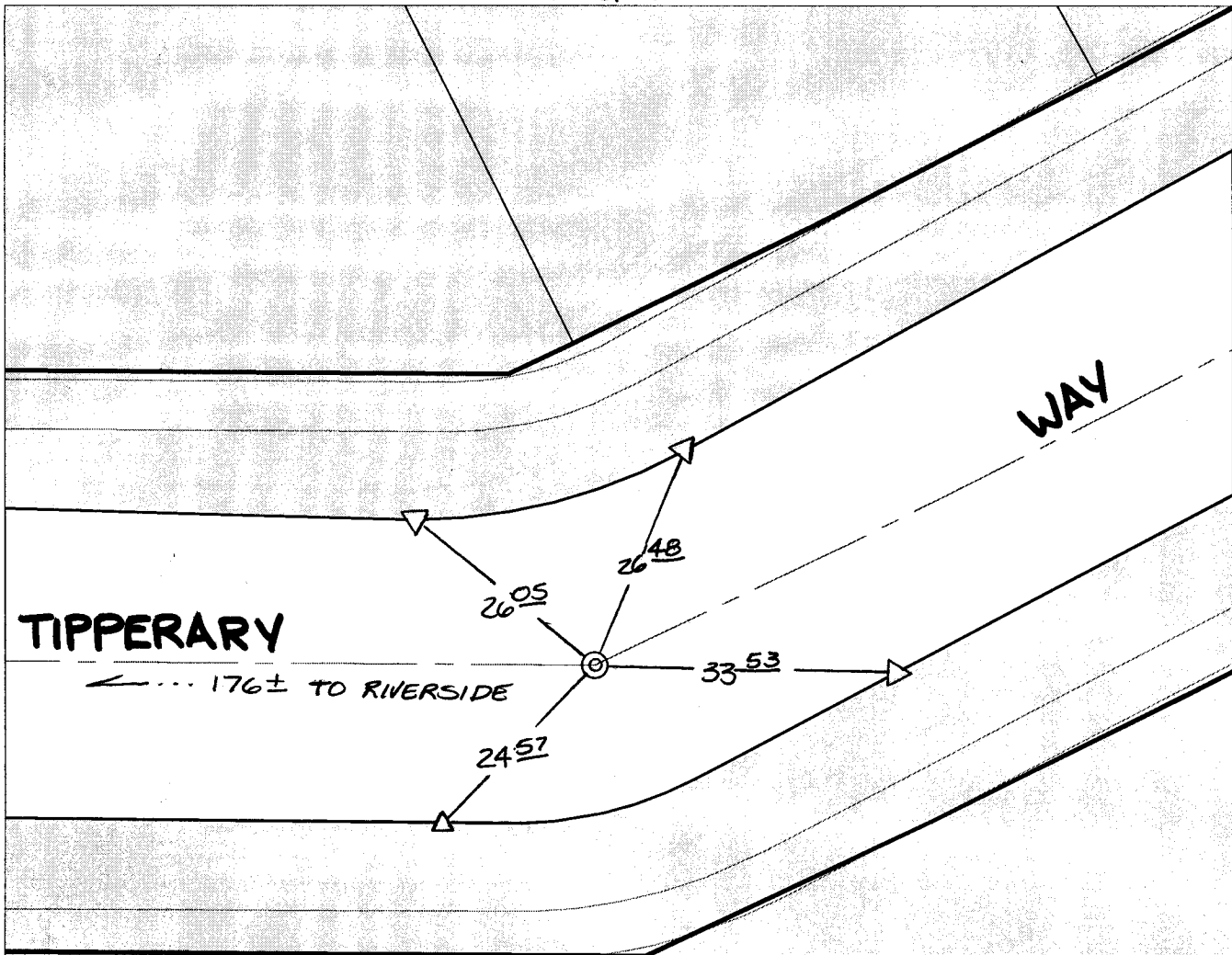
TIPPERARY WAY

OFFICIAL USE ONLY

X-Street:

BC E OF RIVERSIDE

SWING TIES



TIPPERARY

← ... 176± TO RIVERSIDE

WAY

⊙ FD. 3/4" I.P. NO
TAG NO REF
FLUSH RESET
W/P.K. NL. & CITY
SUR TAG FLUSH

△ SET W/"C" NL + CITY TIE TAG ON T/C


- × FD. Ramset Nail on T/C ● FD. LD. & TK. on T/C
- FD. "C" Nail on T/C ○ Set LD. & TK. on T/C

P.K. and City Engineer tag to be set @
surface after street construction is
complete. (If possible)

Scale: 1" = 20'
Date: 02/16/04
Drawn by: SURVEY
F.B.:
TR-Sec: T2SR5W-34

OFFICIAL TIE PLAT
CITY OF RIVERSIDE

*These ties are for the purpose of perpetuating the found
monumentation. No claim is made as to the relationship of
the points or lines shown hereon to true boundary locations.*



Sheet 1 of 1
Cadme MB: 54-1