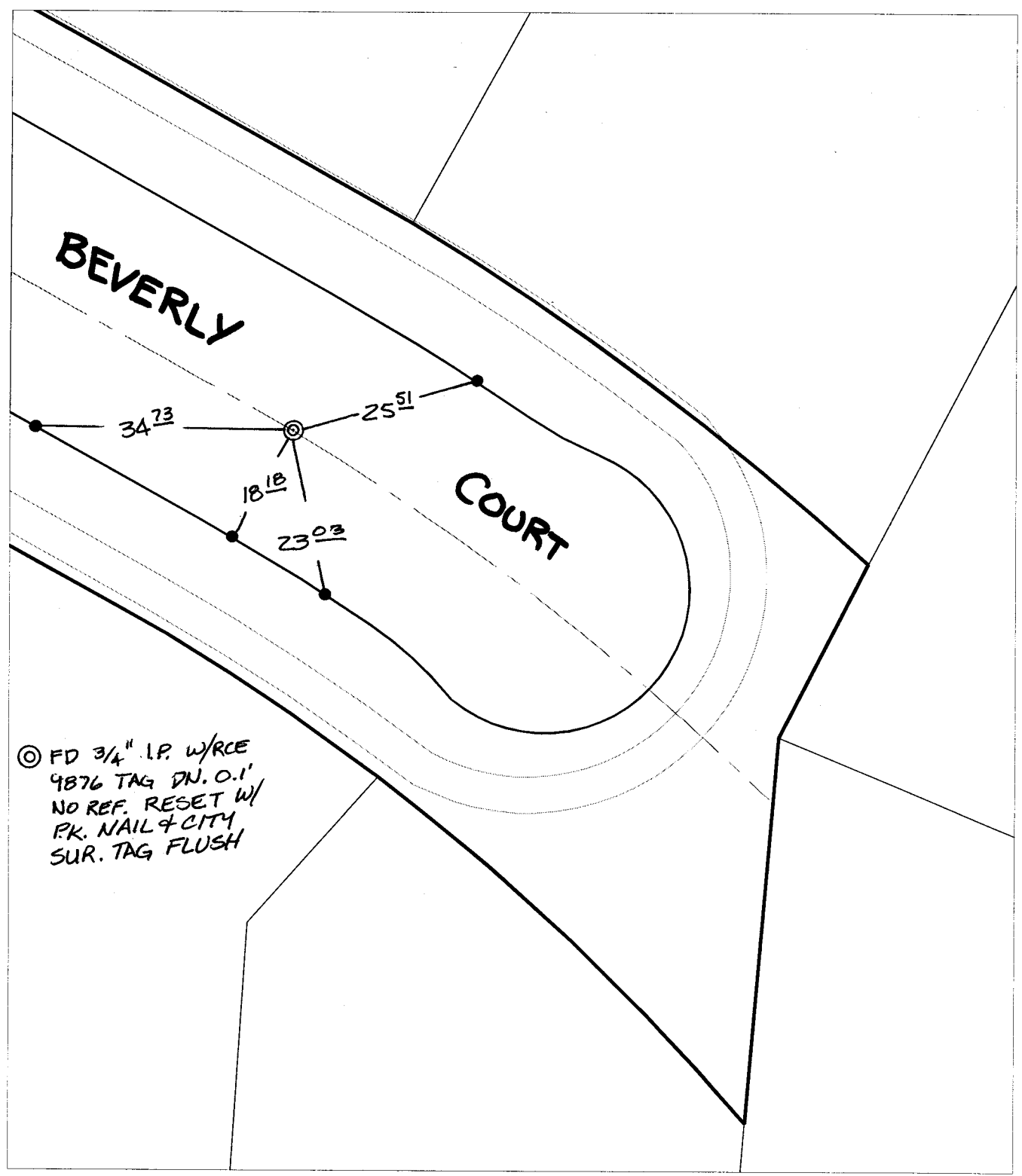


Street: BEVERLY COURT X-Street: END OF STREET  
OFFICIAL USE ONLY




⊙ FD 3/4" I.P. w/RCE  
 4876 TAG DN. 0.1'  
 NO REF. RESET W/  
 P.K. NAIL & CITY  
 SUR. TAG FLUSH

- ✕ FD. Ramset Nail on T/C    ● FD. LD. & TK. on T/C    P.K. and City Engineer tag to be set @ surface after street construction is complete. (If possible)
- FD. "C" Nail on T/C      ○ Set LD. & TK. on T/C

Scale: 1" = 20'  
 Date: 05/31/05  
 Drawn by: survey  
 F.B.:  
 TR-Sec: -

**OFFICIAL TIE PLAT**  
**CITY OF RIVERSIDE**

*These ties are for the purpose of perpetuating the found monumentation. No claim is made as to the relationship of the points or lines shown hereon to true boundary locations.*



Sheet 1 of 1  
 Cadme MB: 38-8