

Street:

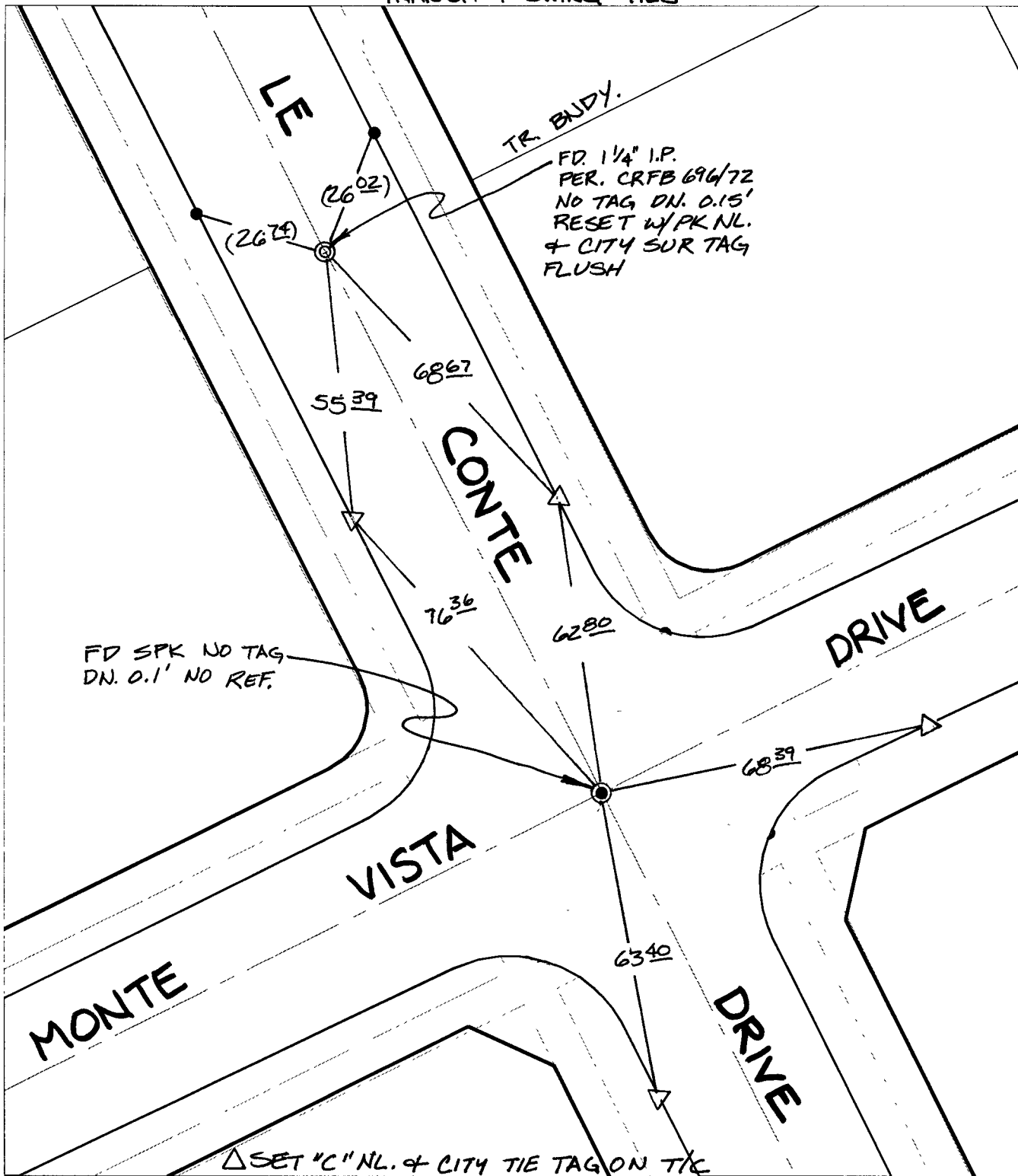
LE CONTE DRIVE

OFFICIAL USE ONLY

X-Street:

MONTE VISTA DRIVE

TRANSIT & SWING TIES



FD SPK NO TAG  
DN. 0.1' NO REF.

FD 1 1/4" I.P.  
PER. CRFB 696/72  
NO TAG DN. 0.15'  
RESET W/PK.NL.  
+ CITY SUR TAG  
FLUSH

TR. BUDY.

△ SET "C" NL. & CITY TIE TAG ON TIC

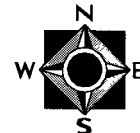
- ✕ FD. Ramset Nail on T/C
- FD. LD. & TK. on T/C
- FD. "C" Nail on T/C
- Set LD. & TK. on T/C

P.K. and City Engineer tag to be set @ surface after street construction is complete. (If possible)

Scale: 1" = 30'  
 Date: 05/11/05  
 Drawn by: survey  
 F.B.:  
 TR-Sec: T2SR4W-31

**OFFICIAL TIE PLAT**  
 CITY OF RIVERSIDE

*These ties are for the purpose of perpetuating the found monumentation. No claim is made as to the relationship of the points or lines shown hereon to true boundary locations.*



Sheet 1 of 1  
 Cadme MB: 41-8