

Street: HIGHRIDGE ST X-Street: GOLDEN STAR AVE
 OFFICIAL USE ONLY

SWING TIES

GOLDEN

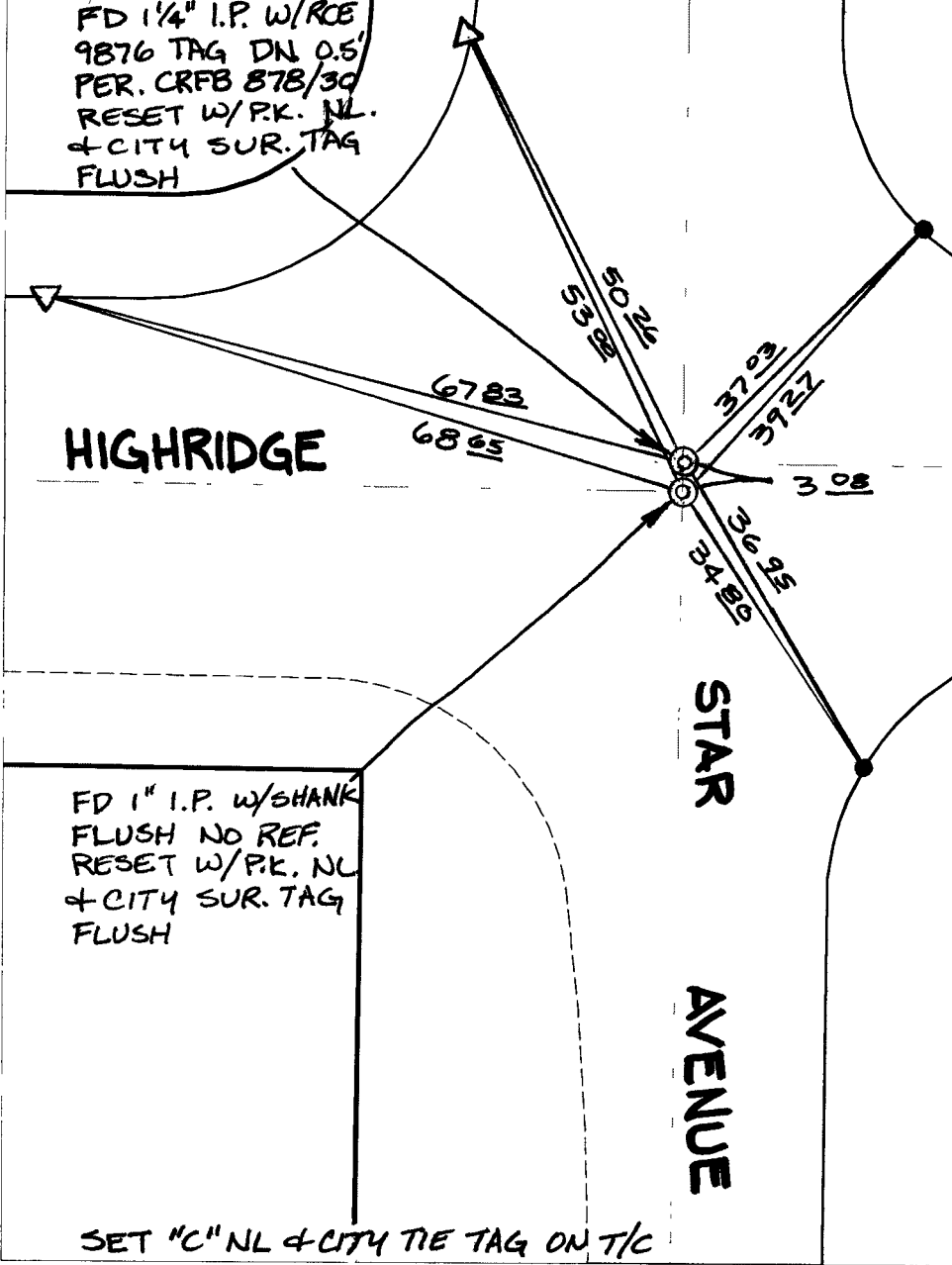
STREET

STAR AVENUE

FD 1 1/4" I.P. W/RCE
 9876 TAG DN 0.5'
 PER. CRFB 878/30
 RESET W/P.K. NL.
 & CITY SUR. TAG
 FLUSH

FD 1" I.P. W/SHANK
 FLUSH NO REF.
 RESET W/P.K. NL
 & CITY SUR. TAG
 FLUSH

SET "C" NL & CITY TIE TAG ON T/C



- ✕ FD. Ramset Nail on T/C ● FD. LD. & TK. on T/C P.K. and City Engineer tag to be set @ surface after street construction is complete. (If possible)
- FD. "C" Nail on T/C ○ Set LD. & TK. on T/C

Scale: 1" = 20'
 Date: 11/17/05
 Drawn by: scurtis
 F.B.:
 TR-Sec: T3SR5W-14

OFFICIAL TIE PLAT
 CITY OF RIVERSIDE

These ties are for the purpose of perpetuating the found monumentation. No claim is made as to the relationship of the points or lines shown hereon to true boundary locations.

Sheet 1 of 1
 Cadme MB: 84-4