

C12109.TIF

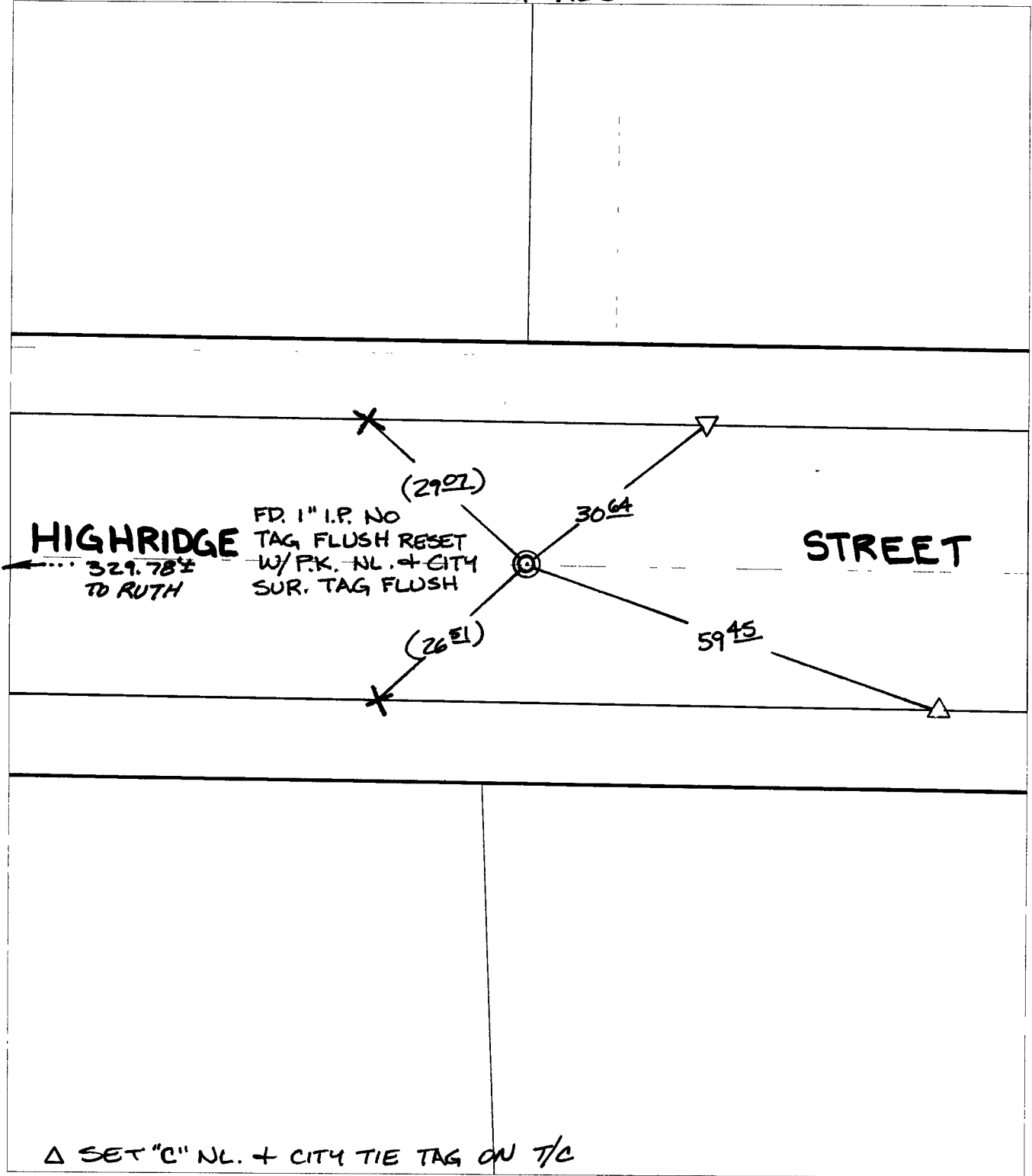
Street:

HIGHRIDGE ST

OFFICIAL USE ONLY

X-Street R BDY EAST OF RUTH WAY

SWING TIES



Δ SET "C" NL. + CITY TIE TAG ON T/C

- ✕ FD. Ramset Nail on T/C ● FD. LD. & TK. on T/C P.K. and City Engineer tag to be set @ surface after street construction is complete. (If possible)
- FD. "C" Nail on T/C ○ Set LD. & TK. on T/C

Scale: 1" = 20'

Date: 11/17/05


Drawn by: scurtis

F.B.:

TR-Sec: T3SR5W-14

OFFICIAL TIE PLAT
CITY OF RIVERSIDE

These ties are for the purpose of perpetuating the found monumentation. No claim is made as to the relationship of the points or lines shown hereon to true boundary locations.



Sheet 1 of 1

Cadme MB: 84-4