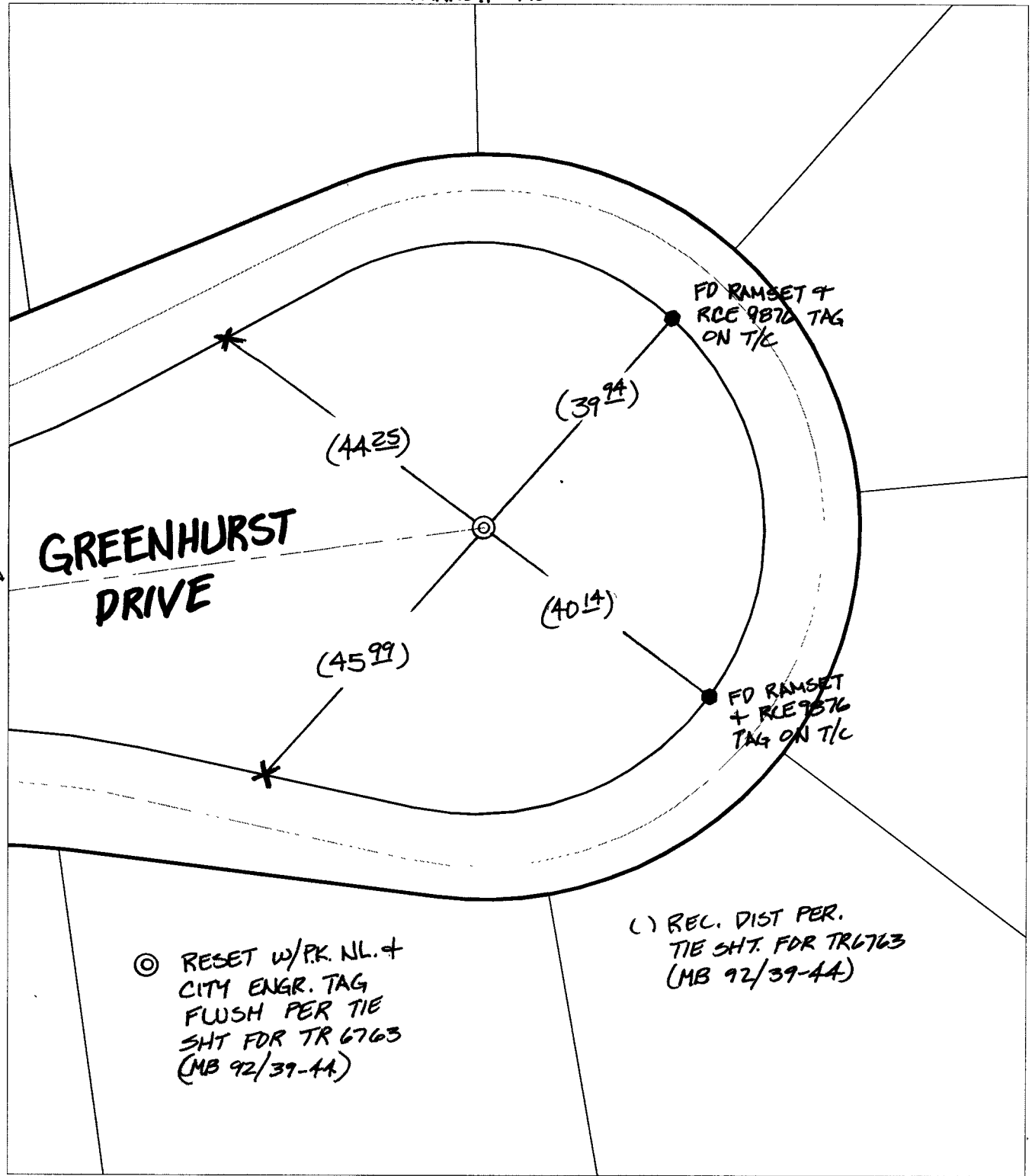


Street: GREENHURST DRIVE  
X-Street: OFFICIAL USE ONLY  
CUL-DE-SAC

TRANSIT TIES



⊙ RESET W/PK. NL. +  
CITY ENGR. TAG  
FLUSH PER TIE  
SHT FOR TR 6763  
(MB 92/39-44)


(1) REC. DIST PER.  
TIE SHT. FOR TR 6763  
(MB 92/39-44)

- ✕ FD. Ramset Nail on T/C      ● FD. LD. & TK. on T/C      P.K. and City Engineer tag to be set @ surface after street construction is complete. (if possible)
- FD. "C" Nail on T/C      ○ Set LD. & TK. on T/C

Scale: 1" = 20'  
Date: 11/20/04  
Drawn by: SURVEY  
F.B.:  
TR-Sec: T3SR6W-14

**OFFICIAL TIE PLAT**  
**CITY OF RIVERSIDE**

*These ties are for the purpose of perpetuating the found monumentation. No claim is made as to the relationship of the points or lines shown hereon to true boundary locations.*



Sheet 1 of 1  
Cadme MB: 64-7