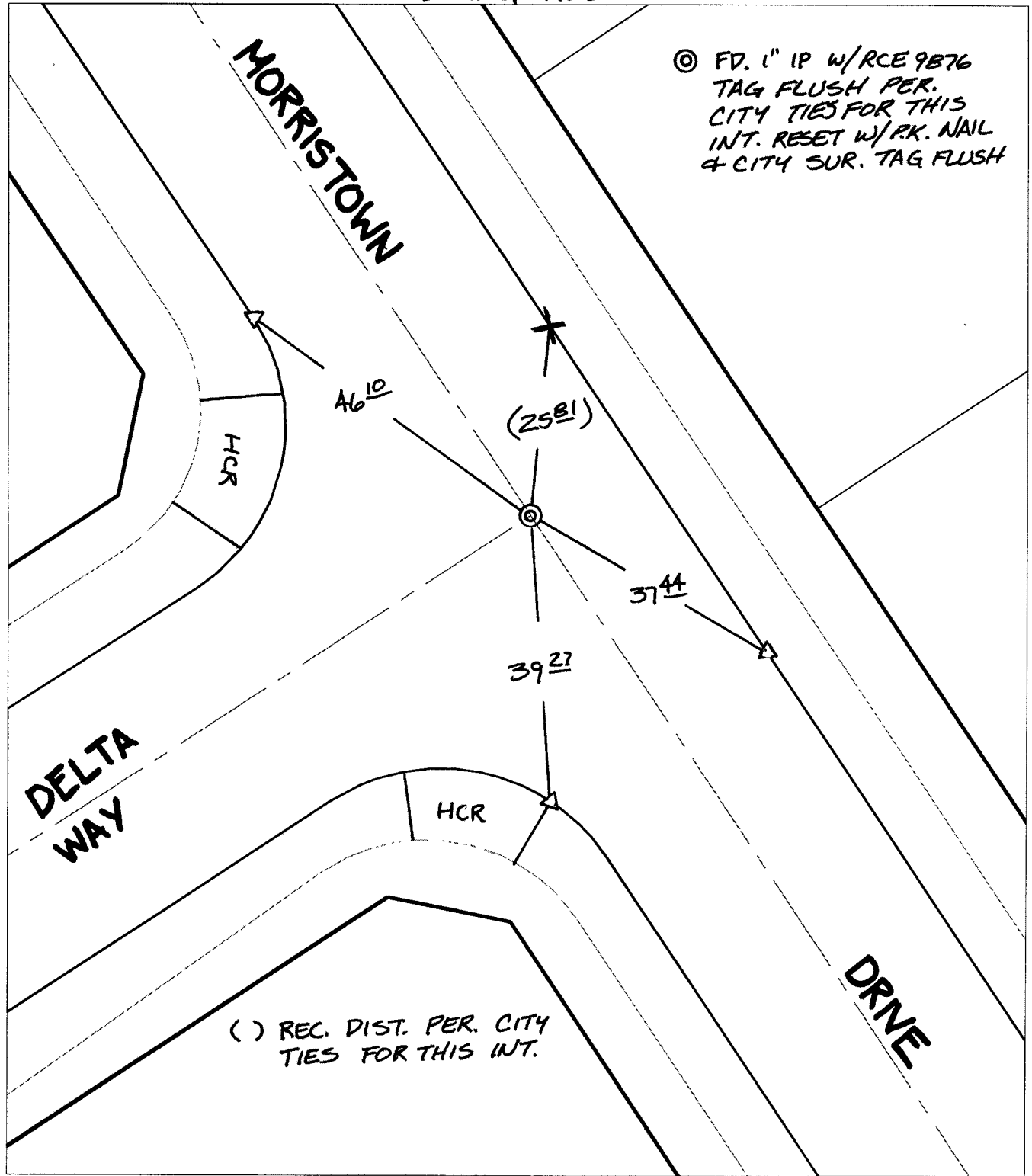


Street: MORRISTOWN DRIVE X-Street: DELTA WAY  
OFFICIAL USE ONLY

SWING TIES

© FD. 1" IP W/RCE 9876  
TAG FLUSH PER.  
CITY TIES FOR THIS  
INT. RESET W/PK. NAIL  
& CITY SUR. TAG FLUSH



( ) REC. DIST. PER. CITY  
TIES FOR THIS INT.

- ✕ FD. Ramset Nail on T/C    ● FD. LD. & TK. on T/C
- FD. "C" Nail on T/C    ○ Set LD. & TK. on T/C

P.K. and City Engineer tag to be set @  
surface after street construction is  
complete. (If possible)

Scale: 1" = 20'  
 Date: 11/20/04  
 Drawn by: SURVEY  
 F.B.:  
 TR-Sec: T3SR6W-15

## OFFICIAL TIE PLAT

### CITY OF RIVERSIDE



*These ties are for the purpose of perpetuating the found  
 monumentation. No claim is made as to the relationship of  
 the points or lines shown hereon to true boundary locations.*

Sheet 1 of 1  
 Cadme MB: 78-2