

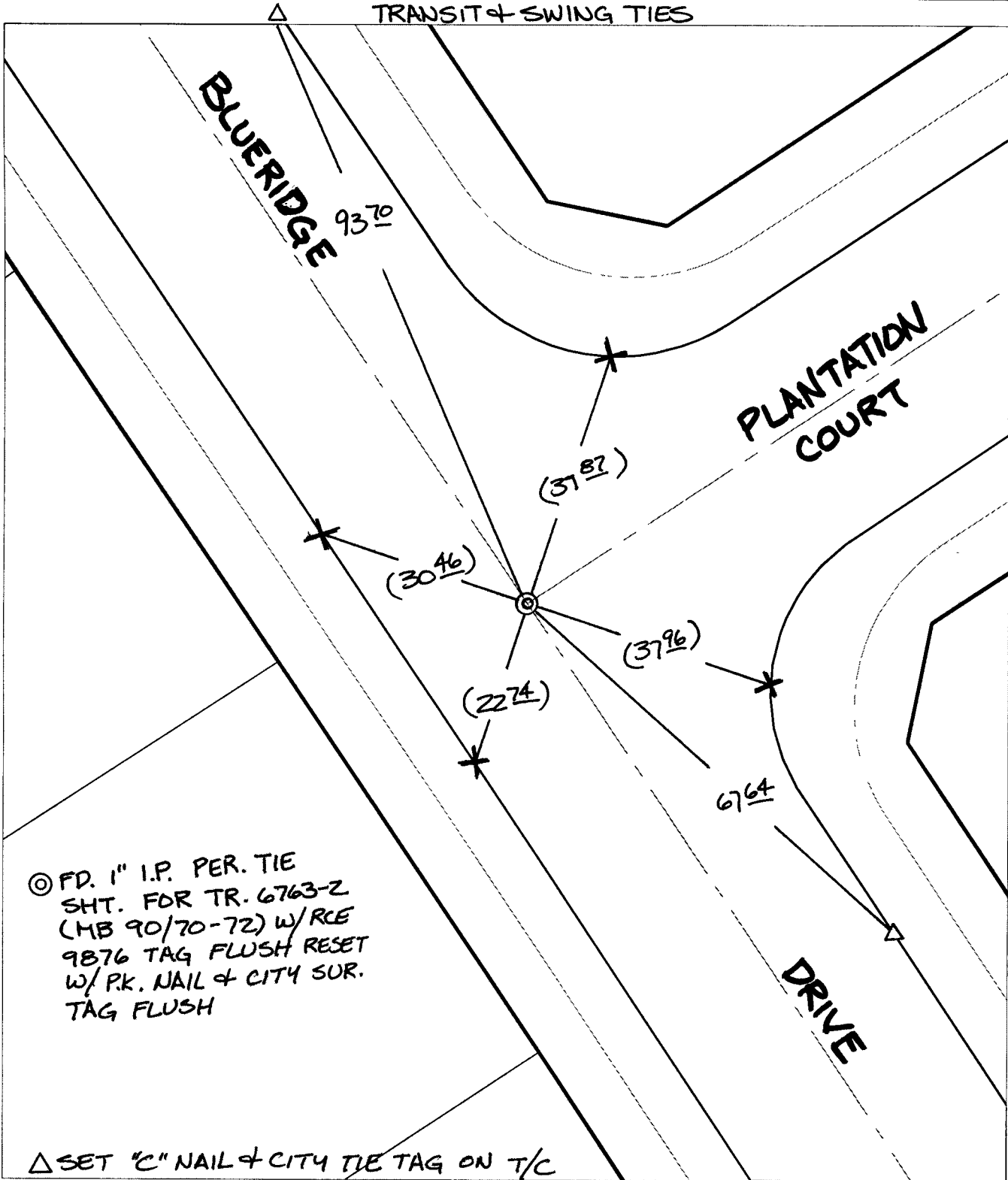
C12129. T1F

Street:

BLUERIDGE DRIVE

X-Street: OFFICIAL USE ONLY

PLANTATION COURT



⊙ FD. 1" I.P. PER. TIE  
 SHT. FOR TR. 6763-2  
 (MB 90/70-72) W/RCE  
 9876 TAG FLUSH RESET  
 W/ P.K. NAIL & CITY SUR.  
 TAG FLUSH


△ SET "C" NAIL & CITY TIE TAG ON T/C

- ✕ FD. Ramset Nail on T/C      ● FD. LD. & TK. on T/C      P.K. and City Engineer tag to be set @ surface after street construction is complete. (If possible)
- FD. "C" Nail on T/C      ○ Set LD. & TK. on T/C

Scale: 1" = 20'  
 Date: 11/20/04  
 Drawn by: SURVEY  
 F.B.:  
 TR-Sec: T3SR6W-14

**OFFICIAL TIE PLAT**  
**CITY OF RIVERSIDE**

*These ties are for the purpose of perpetuating the found monumentation. No claim is made as to the relationship of the points or lines shown hereon to true boundary locations.*



Sheet 1 of 1  
 Cadme MB: 79-1