

C12136

Street:

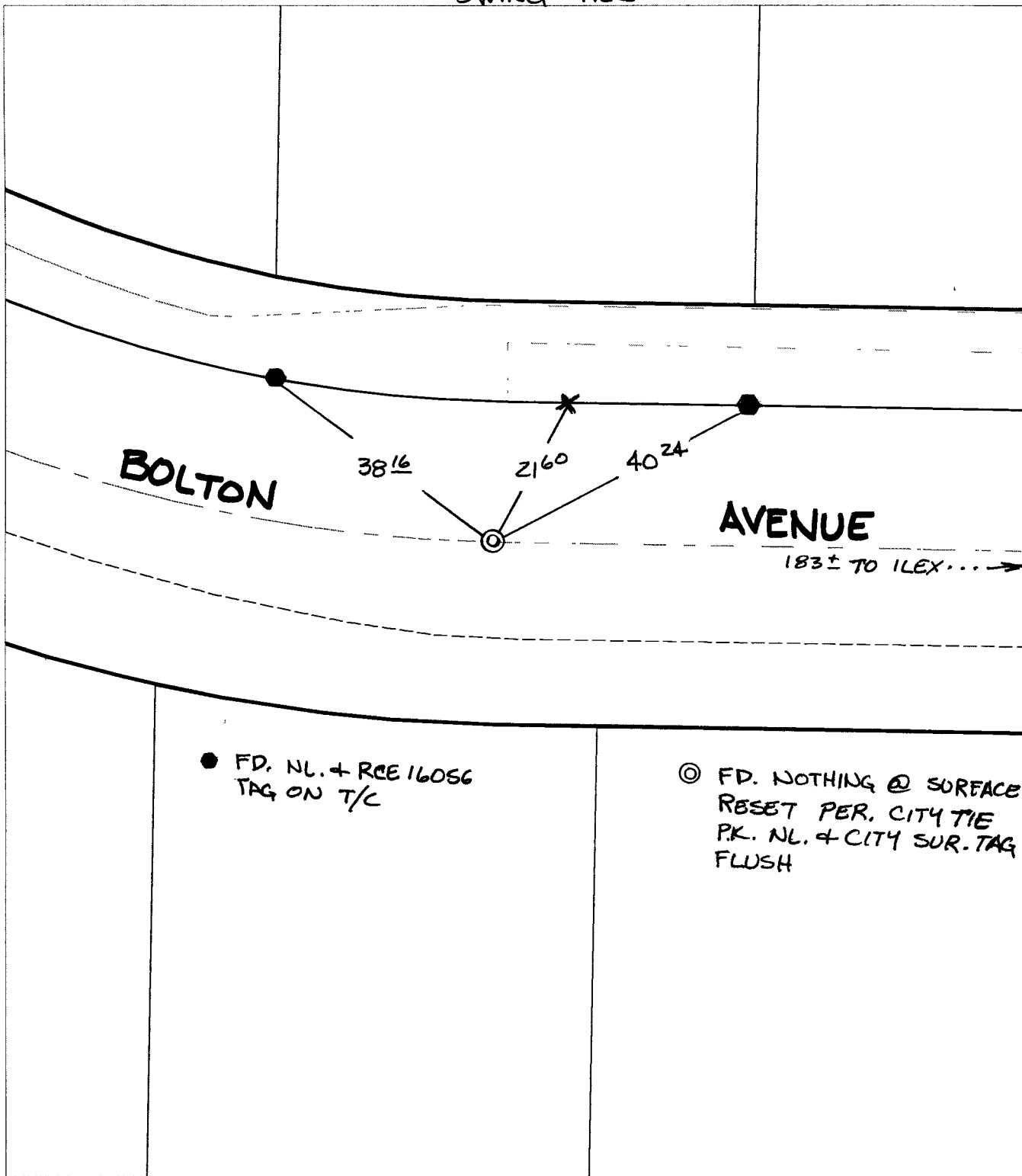
BOLTON AVENUE

OFFICIAL USE ONLY

X-Street:

EC W. OF ILEX CT.

SWING TIES



● FD. NL. + RCE 16056 TAG ON T/C

◎ FD. NOTHING @ SURFACE RESET PER. CITY TIE P.K. NL. + CITY SUR. TAG FLUSH

- ✕ FD. Ramset Nail on T/C ● FD. LD. & TK. on T/C
- FD. "C" Nail on T/C ○ Set LD. & TK. on T/C

P.K. and City Engineer tag to be set @ surface after street construction is complete. (If possible)

Scale: 1" = 20'

Date: 11/27/04

Drawn by: survey

F.B.:

TR-Sec: T3SR6W-12

OFFICIAL TIE PLAT

CITY OF RIVERSIDE



These ties are for the purpose of perpetuating the found monumentation. No claim is made as to the relationship of the points or lines shown hereon to true boundary locations.

Sheet 1 of 1

Cadme MB: 65-5