

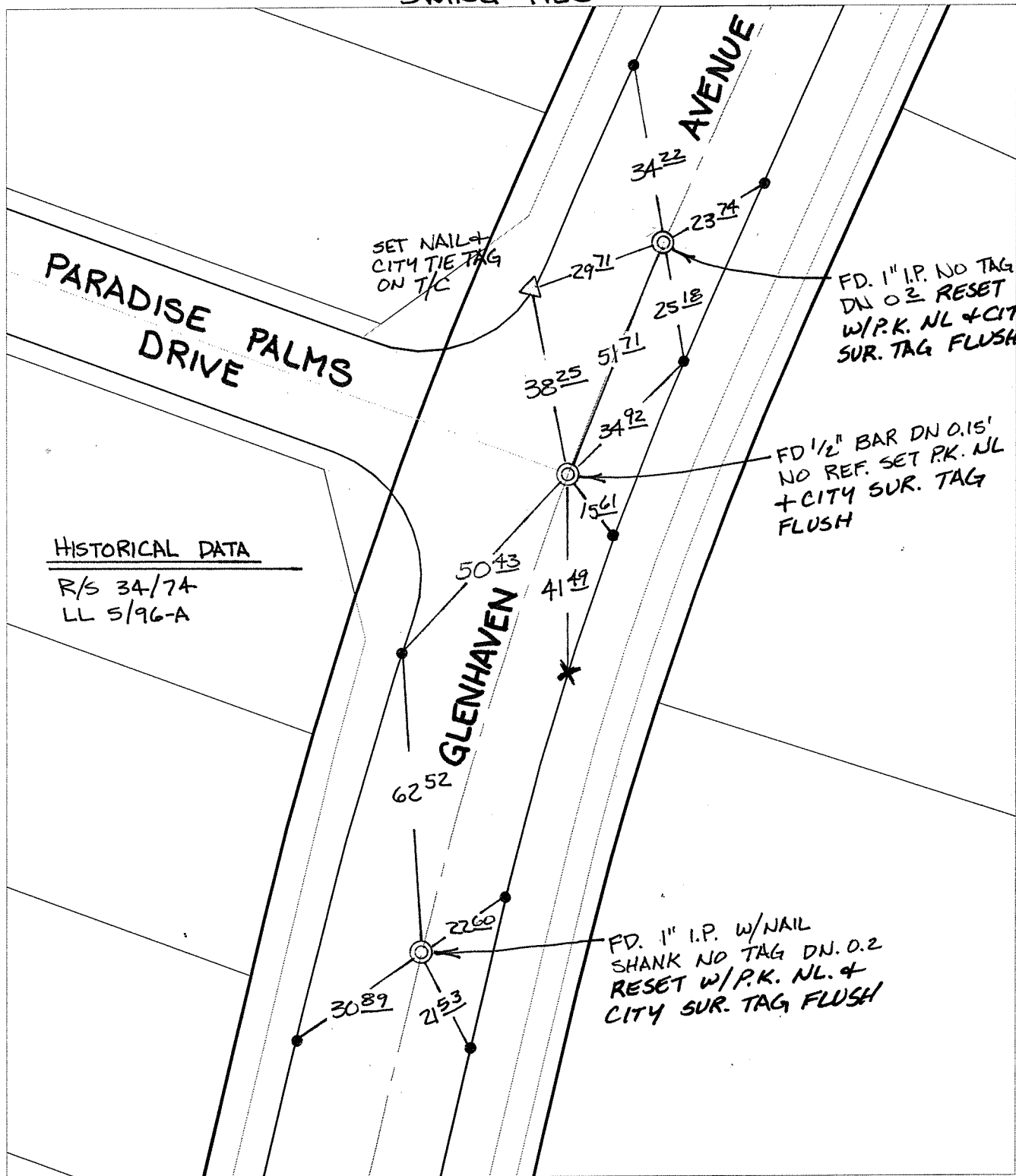
Street:

GLENHAVEN AVENUE

OFFICIAL USE ONLY

X-Street: PARADISE PALMS DRIVE

SWING TIES



HISTORICAL DATA

R/S 34-74  
LL 5/96-A

- ✕ FD. Ramset Nail on T/C    ● FD. LD. & TK. on T/C
- FD. "C" Nail on T/C    ○ Set LD. & TK. on T/C

P.K. and City Engineer tag to be set @ surface after street construction is complete. (If possible)

Scale: 1" = 30'

Date: 02/15/06

Drawn by: survey

F.B.:

TR-Sec: T2SR5W-36

# OFFICIAL TIE PLAT

## CITY OF RIVERSIDE

*These ties are for the purpose of perpetuating the found monumentation. No claim is made as to the relationship of the points or lines shown hereon to true boundary locations.*



Sheet 1 of 1

Cadme MB: 55-4