

Street:

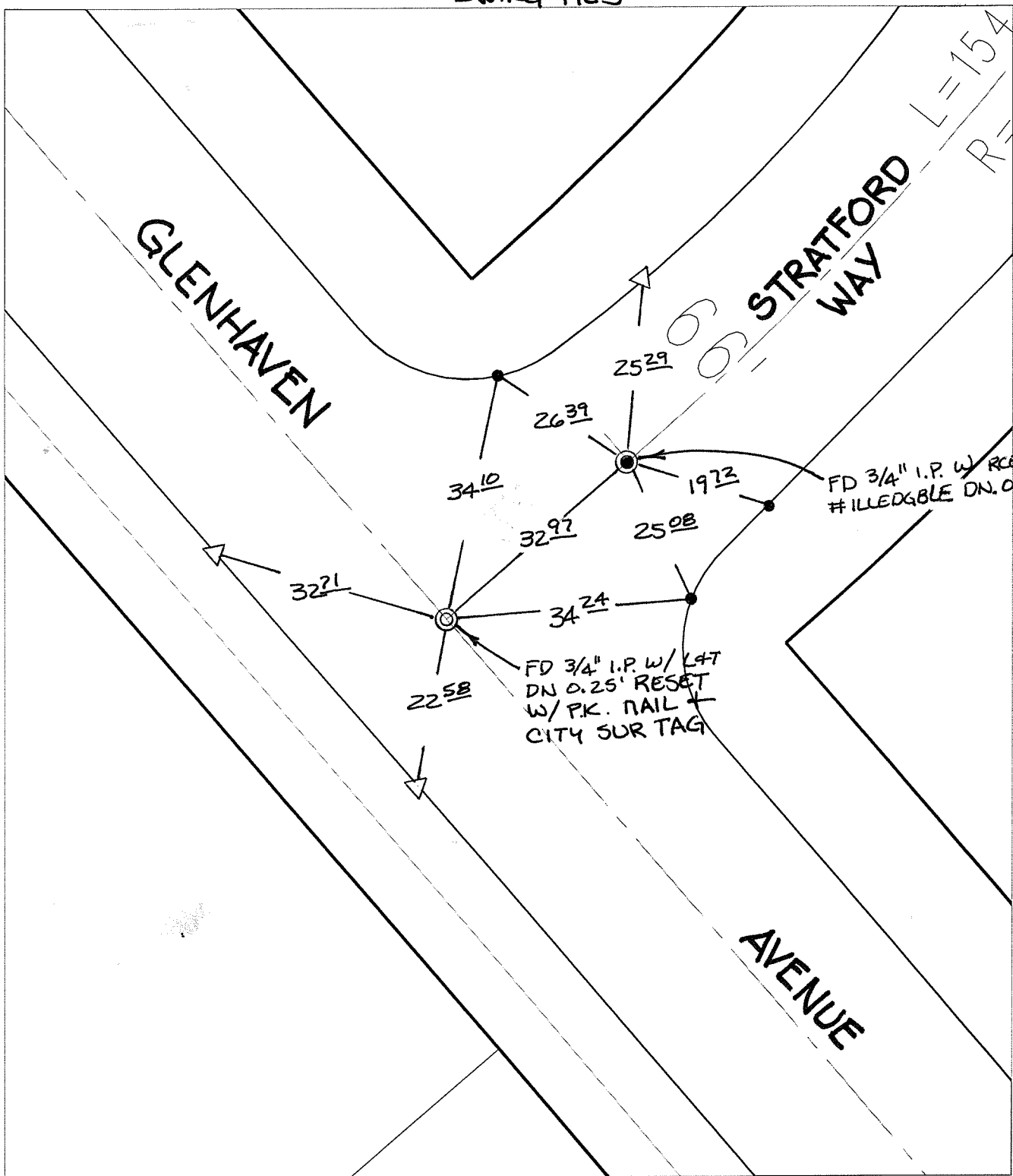
GLENHAVEN AVENUE

X-Street:

STRATFORD WAY

OFFICIAL USE ONLY

SWING TIES



- ✕ FD. Ramset Nail on T/C
- FD. "C" Nail on T/C

- FD. LD. & TK. on T/C
- Set LD. & TK. on T/C

P.K. and City Engineer tag to be set @ surface after street construction is complete. (If possible)

Scale: 1" = 20'  
 Date: 02/15/06  
 Drawn by: scurtis  
 F.B.:  
 TR-Sec: T2SR5W-36

## OFFICIAL TIE PLAT

### CITY OF RIVERSIDE

*These ties are for the purpose of perpetuating the found monumentation. No claim is made as to the relationship of the points or lines shown hereon to true boundary locations.*



Sheet 1 of 1  
 Cadme MB: 55-2