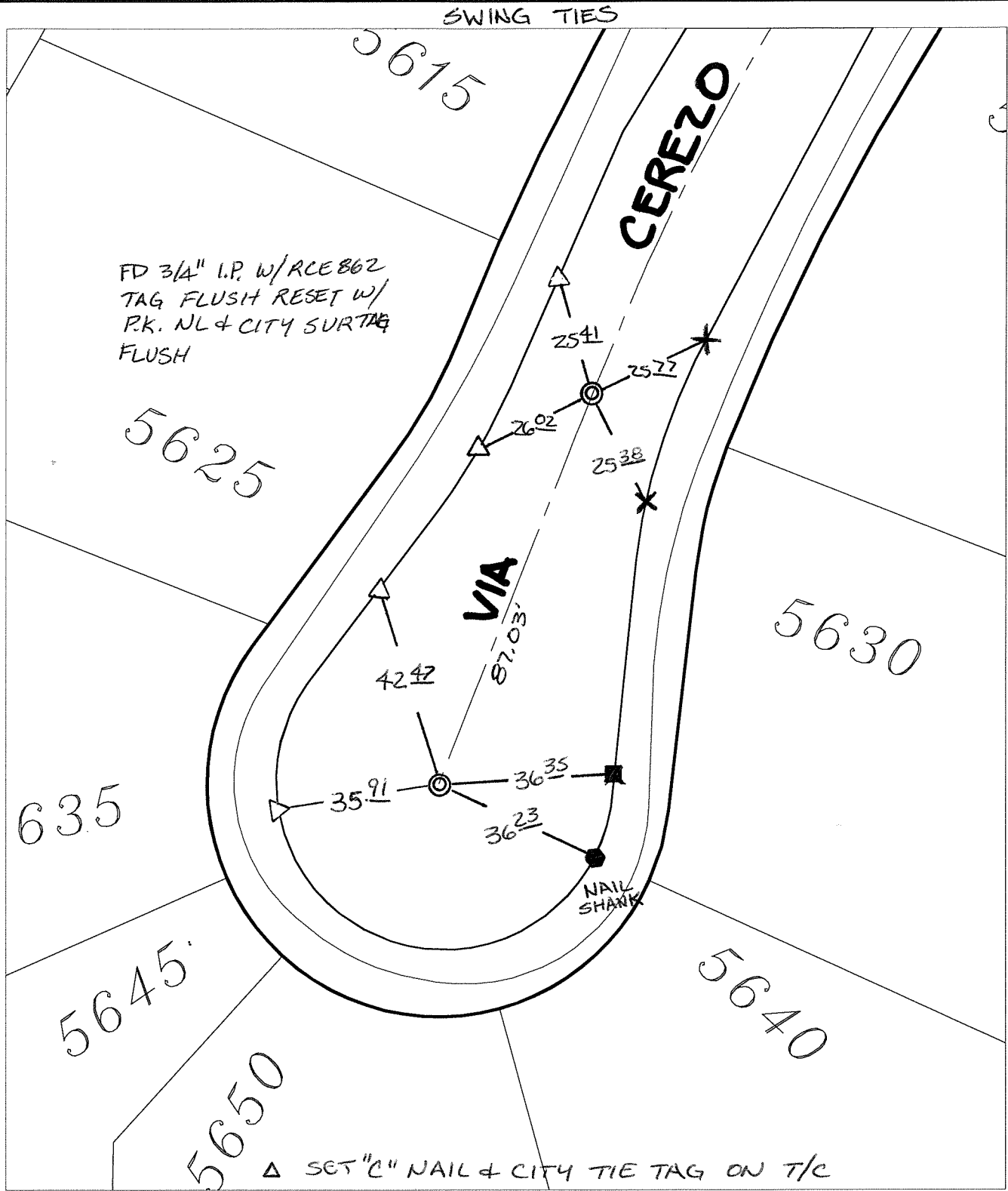


Street:

VIA CERREZO

X-Street:
OFFICIAL USE ONLY

CUL-DE-SAC



FD 3/4" I.P. W/RCE862
TAG FLUSH RESET W/
P.K. NL & CITY SURTAG
FLUSH

△ SET "C" NAIL & CITY TIE TAG ON T/C


- ✕ FD. Ramset Nail on T/C ● FD. LD. & TK. on T/C
- FD. "C" Nail on T/C ○ Set LD. & TK. on T/C

P.K. and City Engineer tag to be set @
surface after street construction is
complete. (If possible)

Scale: 1" = 30'
Date: 09/18/07
Drawn by: pw
F.B.:
TR-Sec: T2SR4W-32

OFFICIAL TIE PLAT
CITY OF RIVERSIDE

*These ties are for the purpose of perpetuating the found
monumentation. No claim is made as to the relationship of
the points or lines shown hereon to true boundary locations.*



Sheet 1 of 1
Cadme MB: 57-3