

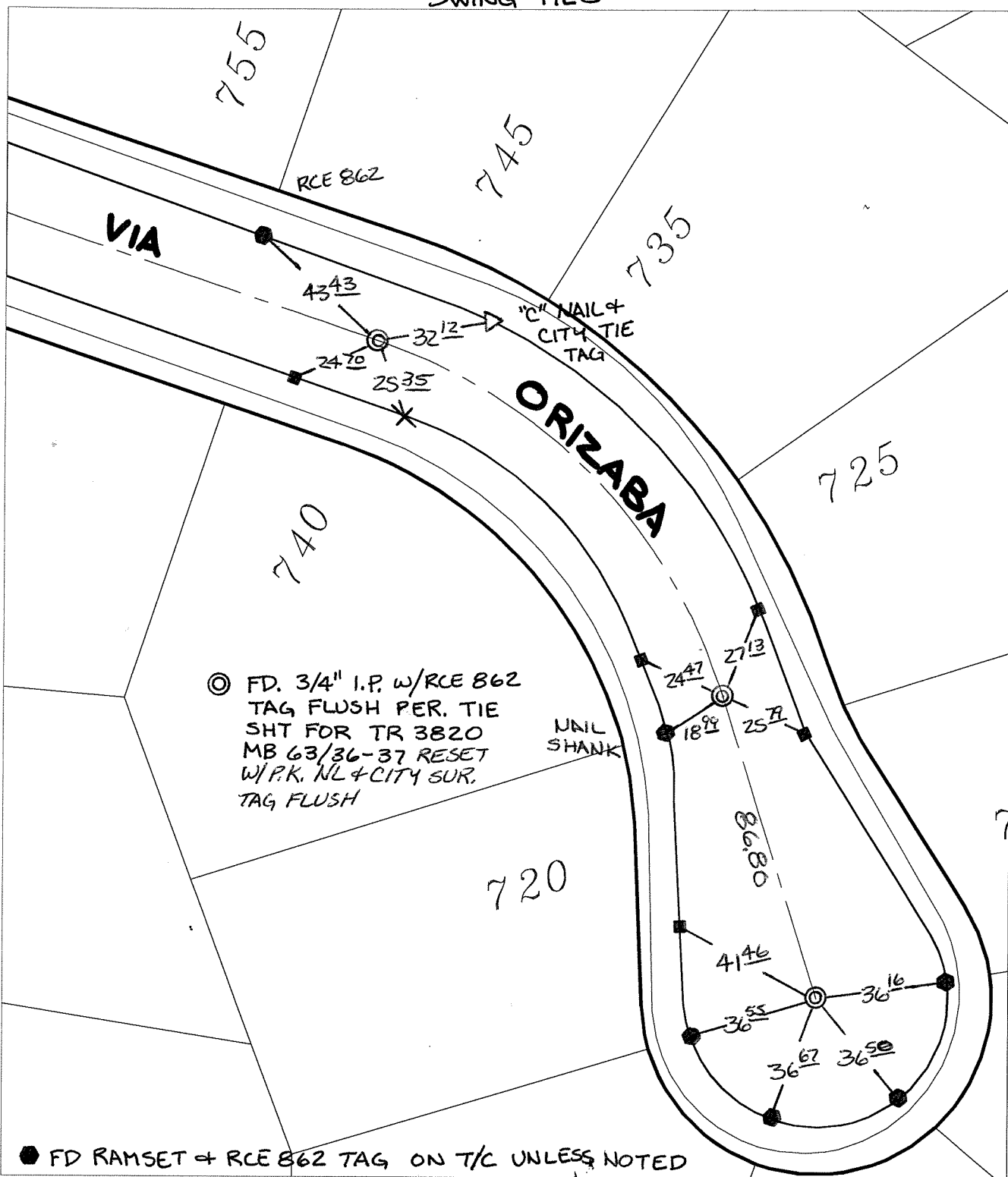
Street:

VIA ORIZABA

X-Street:
OFFICIAL USE ONLY

CUL-DE-SAC

SWING TIES



Scale: 1" = 40'

Date: 09/18/07

Drawn by: pw

F.B.:

TR-Sec: T2SR4W-32

OFFICIAL TIE PLAT

CITY OF RIVERSIDE

These ties are for the purpose of perpetuating the found monumentation. No claim is made as to the relationship of the points or lines shown hereon to true boundary locations.



Sheet 1 of 1

Cadme MB: 57-3