

Street:

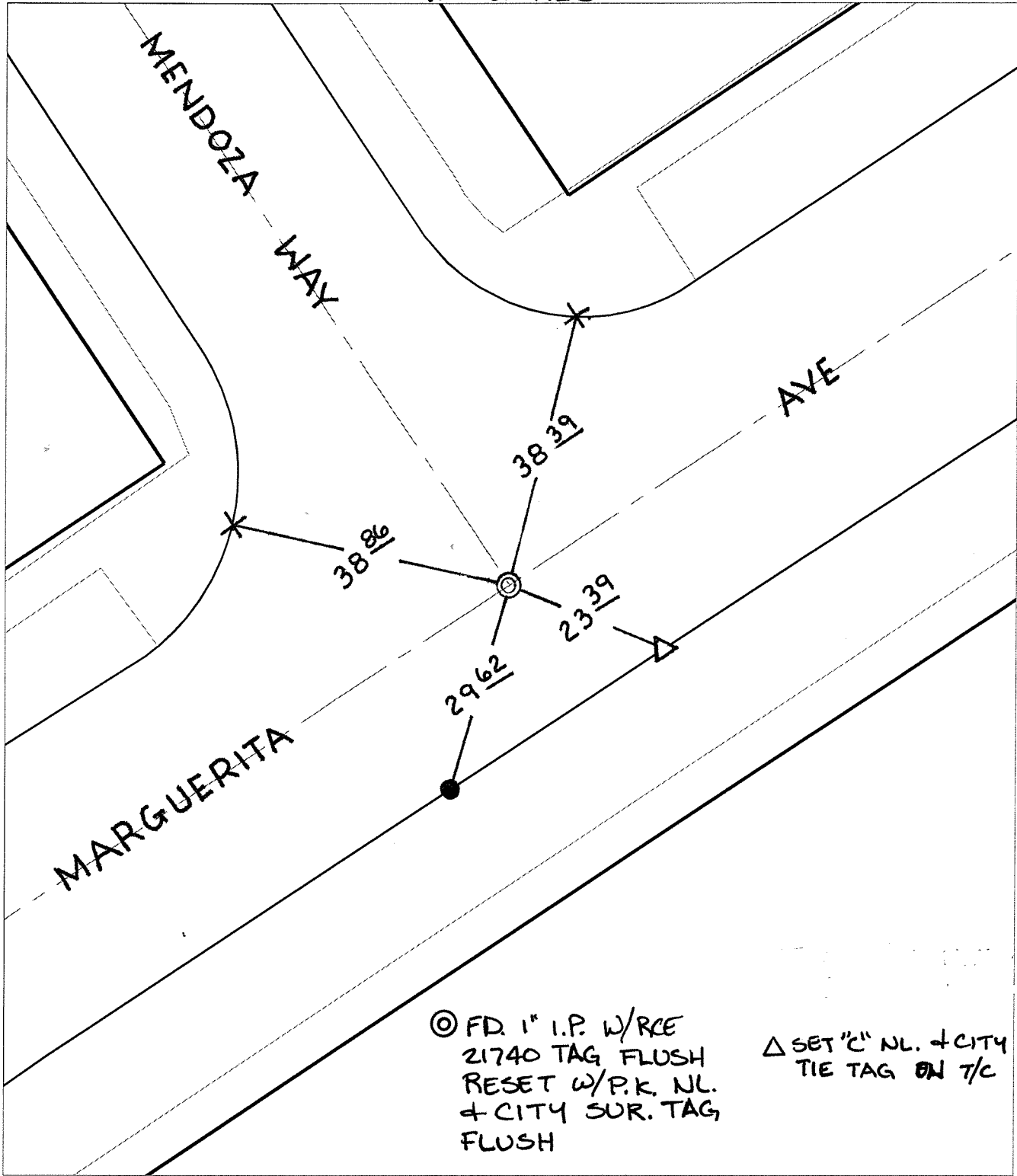
MARGUERITA AVENUE

OFFICIAL USE ONLY

X-Street:

MENDOZA WAY

SWING TIES



⊙ FD. 1" I.P. W/RCE  
 21740 TAG FLUSH  
 RESET W/P.K. NL.  
 + CITY SUR. TAG  
 FLUSH

△ SET "C" NL. + CITY  
 TIE TAG ON T/C

- ✕ FD. Ramset Nail on T/C
- FD. LD. & TK. on T/C
- FD. "C" Nail on T/C
- Set LD. & TK. on T/C

P.K. and City Engineer tag to be set @  
 surface after street construction is  
 complete. (if possible)

Scale: 1" = 20'  
 Date: 01/30/06  
 Drawn by: scurtis  
 F.B.:  
 TR-Sec: T3SR5W-3

## OFFICIAL TIE PLAT

### CITY OF RIVERSIDE

*These ties are for the purpose of perpetuating the found  
 monumentation. No claim is made as to the relationship of  
 the points or lines shown hereon to true boundary locations.*



Sheet 1 of 1  
 Cadme MB: 53-8